



South Nation
Conservation
de la Nation Sud

South Nation Conservation
Low Water Contingency Plan

May 2026





Contents

| | |
|---|----|
| Executive Summary | 2 |
| Messaging..... | 2 |
| Roles and Responsibilities | 2 |
| 1.0 Background..... | 4 |
| 2.0 Purpose of the Plan..... | 6 |
| 3.0 Ontario Low Water Response Plan | 7 |
| 4.0 South Nation Conservation Water Response Team | 8 |
| 4.1 Water Response Team Terms of Reference | 8 |
| 5.0 SNC Low Water Response System..... | 14 |
| 6.0 Standardized Messaging..... | 16 |
| 7.0 Municipal Contact Information | 18 |
| 7.1 Current Municipal By-laws..... | 20 |
| Appendix A..... | 24 |
| Appendix B..... | 25 |

List of Tables

| | |
|---|----|
| Table 1: Low Water Levels as part of the Ontario Low Water Response Program | 7 |
| Table 2: Ontario Low Water Response Program triggers for low water conditions | 8 |
| Table 3: South Nation Water Response Team | 10 |
| Table 4: Contact information for the municipalities within SNC jurisdiction | 18 |
| Table 5: Water conservation by-laws of the municipalities within SNC jurisdiction | 20 |

List of Figures

| | |
|--|----|
| Figure 1: Location of rain gauges, climate stations, stream gauges, and groundwater wells that SNC uses to assess current conditions across the jurisdiction | 5 |
| Figure 2: Example of a Low Water Advisory message..... | 16 |

Appendix A

| | |
|--|----|
| South Nation Conservation Staff Directory..... | 24 |
|--|----|

Appendix B

| | |
|---------------------------------------|----|
| Ontario Low Water Response Plan | 25 |
|---------------------------------------|----|



Executive Summary

The South Nation Conservation (SNC) Low Water Contingency Plan was developed in accordance with the provincial standards established under the Ontario Low Water Response Program (2000) by the Ontario Ministry of Natural Resources. The program outlines procedures for responding to low water conditions in order to provide early warning, support proactive decision-making, and reduce the risk of water quantity issues and associated socioeconomic impacts. As the local administrator of the Ontario Low Water Response Program within its jurisdiction, SNC works collaboratively with the Low Water Response Team to monitor conditions and provide timely information and advanced warning to partner municipalities, stakeholders, and the public. This coordinated approach helps support informed actions to minimize the potential impacts of drought conditions.

Messaging

Three types of Low Water Advisory messages may be issued depending upon the situation. From least to most urgent, they are:

| | |
|------------------|---|
| Level I | The potential for water supply problems is identified. <i>Target: 10% use reduction</i> |
| Level II | Minor water supply issues are encountered. <i>Target: An additional 10% reduction, municipal by-laws enacted</i> |
| Level III | Supply no longer meets demand. Social and economic impacts are experienced. <i>Target: Reduce/manage water demands to the maximum extent (ex: amend PTTW, new by-laws)</i> |

Roles and Responsibilities

Ministry of Natural Resources (MNR)

- Administers the Ontario Low Water Response (OLWR) Program at the provincial level through the Surface Water Monitoring Centre (SWMC).
- Provides provincial drought and low water monitoring, forecasting, early warning, and notification services.
- Maintains overall program direction, policies, science support, and information systems related to low water response.
- Participates on local Water Response Teams (WRTs) to provide technical guidance and support.
- Receives notification from Conservation Authorities and/or WRTs regarding the confirmation of Level I, II, or III low water conditions.
- Coordinates provincial support during drought emergencies through the Provincial Emergency Operations Centre (PEOC) if a municipal state of emergency is declared.



South Nation Conservation (SNC)

- Administers the Ontario Low Water Response Program locally within the SNC jurisdiction.
- Maintains a local Low Water Response System to monitor watershed conditions and provide early warning of drought and low water conditions.
- Collects, analyzes, and communicates hydrologic, meteorological, groundwater, and environmental monitoring data.
- Coordinates and supports the local Water Response Team (WRT), including representatives from municipalities, provincial agencies, agricultural organizations, and other stakeholders.
- Issues Low Water Advisory notifications and provides ongoing updates to municipalities, provincial agencies, emergency responders, stakeholders, media, and the public.
- Notifies the Surface Water Monitoring Centre (SWMC) of confirmed Level I, II, or III low water conditions.
- Provides technical advice and coordination support regarding water conservation and drought response measures.
- Operates SNC-owned water control structures, where applicable.

Water Response Team (WRT)

- Reviews watershed conditions, monitoring data, weather forecasts, and reported impacts to assess drought severity.
- Confirms and administers Level I, II, and III low water condition declarations locally.
- Recommends appropriate water conservation measures and response actions based on existing conditions and identified risks.
- Provides local knowledge and technical input to support coordinated drought response and communication efforts.



Municipalities:

- Responsible for implementing local drought response measures and emergency management actions within their jurisdictions.
- Implement municipal Emergency Response Plans, water conservation measures, and water use restrictions where necessary.
- Coordinate emergency response actions related to drought impacts such as dry wells, water supply shortages, and public communication.
- Work collaboratively with SNC, the Water Response Team, and provincial agencies to support coordinated drought response efforts.

Any questions or feedback regarding this plan or other aspects of dealing with drought emergencies should be directed to SNC. SNC's water team may be reached by phone: 1-877-984-2948 or email: info@nation.on.ca. See *Appendix A* for contact details.

1.0 Background

The Ontario Low Water Response (OLWR) Program is part of the Ontario Ministry of Natural Resources' (MNR) emergency management framework. The program outlines the provincial approach for monitoring, assessing, and responding to low water and drought conditions to reduce the risk of water quantity issues and associated socioeconomic impacts. The program is intended to provide early warning of water availability issues and deteriorating watershed conditions and to support coordinated local response measures.

The Ontario Low Water Response Program is administered provincially by the Ministry of Natural Resources Surface Water Monitoring Centre (SWMC) in partnership with provincial ministries, Conservation Authorities, municipalities, and other agencies. Provincially, MNR provides overall program coordination, guidance, drought monitoring, forecasting, and notification services. Local implementation is delivered collaboratively through Water Response Teams (WRTs) led by Conservation Authorities.

As the local delivery agency for the Ontario Low Water Response Program within the South Nation Conservation jurisdiction, SNC is responsible for monitoring watershed conditions, coordinating local low water response activities, and issuing Low Water Advisories to municipalities, stakeholders, and the public. SNC works closely with its Water Response Team, which includes representatives from municipalities, provincial agencies, agricultural organizations, and other water users, to assess local conditions and provide recommendations regarding water conservation and drought response measures.

Figure 1 illustrates the South Nation Conservation (SNC) jurisdiction and the South Nation River watershed. Stream gauges and weather station locations can also be found on the map, which are used by SNC staff when monitoring watershed conditions.

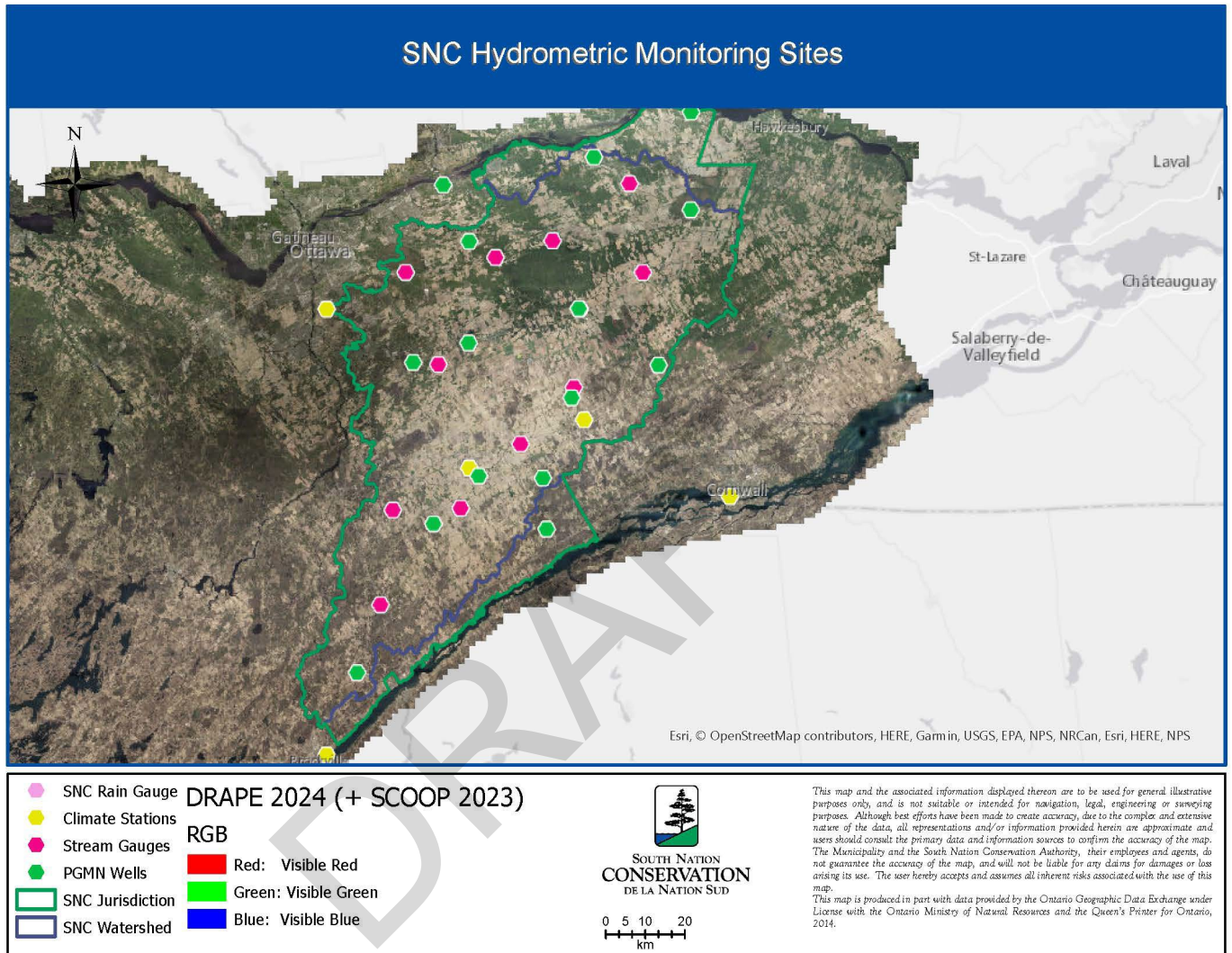


Figure 1: Location of rain gauges, climate stations, stream gauges, and groundwater wells that SNC uses to assess current conditions across the jurisdiction



2.0 Purpose of the Plan

The purpose of this Plan is to describe the procedures, responsibilities, and communication protocols that South Nation Conservation (SNC) will follow in response to low water conditions within its jurisdiction.

One of SNC's key responsibilities under the Ontario Low Water Response Program is to maintain a drought monitoring and warning system throughout the watershed. This system is intended to provide timely information to municipalities, counties, emergency responders, provincial agencies, stakeholders, and the public regarding current and potential low water conditions.

The objectives of SNC's Low Water Response System are to:

1. Provide advance notice of low water and drought conditions to municipalities, stakeholders, and the public so that actions can be taken to reduce or minimize impacts;
2. Provide ongoing updates regarding watershed conditions, forecasts, and drought severity;
3. Support coordinated water conservation messaging and response actions among municipalities, agencies, and water users; and
4. Facilitate communication and collaboration between local Water Response Team members, provincial agencies, and municipalities during escalating drought conditions.

Low Water Response is a provincially mandated program delivered locally by Conservation Authorities. SNC maintains a network of hydrometric stations, precipitation gauges, groundwater monitoring wells, and environmental monitoring programs that provide near real-time information on watershed conditions. This information is used to assess trends, evaluate drought severity, and support decision-making.

SNC works closely with a Water Response Team to review watershed conditions, weather forecasts, streamflow data, groundwater trends, and reported impacts to determine appropriate response actions and communication requirements. In carrying out this role, SNC acts primarily in an advisory and coordination capacity. SNC is responsible for monitoring watershed conditions, issuing Low Water Advisory messages, supporting Water Response Team discussions, and operating its water control structures where applicable. SNC does not have authority to enforce drought response measures or municipal water restrictions unless specifically authorized under other legislation.

Municipalities remain responsible for implementing local drought response measures, emergency management actions, and water conservation bylaws within their jurisdictions. Provincial ministries may provide guidance, technical assistance, regulatory support, or emergency coordination where appropriate.

This Plan will be reviewed and updated by SNC on an annual basis and distributed to emergency contacts, municipalities, and Water Response Team members.



3.0 Ontario Low Water Response Plan

The Ontario Low Water Response (OLWR) Program was developed to support provincial preparedness, improve coordination, and provide a consistent framework for responding to drought and low water conditions across Ontario. The program recognizes that effective drought management requires collaboration between provincial ministries, Conservation Authorities, municipalities, water users, and other stakeholders.

Under the OLWR Program, the Province provides overall program direction, policy guidance, science support, monitoring coordination, and information management through the Ministry of Natural Resources Surface Water Monitoring Centre (SWMC). Provincial ministries also participate on Water Response Teams to provide technical advice and identify potential tools, programs, and regulatory measures that may assist during prolonged drought conditions.

At the local level, Conservation Authorities and Water Response Teams are responsible for monitoring conditions, evaluating impacts, confirming low water conditions, and communicating conservation measures and response recommendations. The emphasis of the local response program is on early warning, coordinated communication, voluntary conservation, and minimizing environmental, social, and economic impacts associated with drought.

The Ontario Low Water Response Program identifies three levels of low water severity, each associated with increasing conservation and response measures.

Table 1: Low Water Levels as part of the Ontario Low Water Response Program

| Condition | Response |
|--|---|
| Level I <i>Voluntary Conservation</i> | The potential for water supply problems is identified. <i>Target: 10% use reduction</i> |
| Level II <i>Conservation and Restrictions on Non-Essential Use</i> | Minor water supply issues are encountered. <i>Target: An additional 10% reduction, municipal by-laws enacted</i> |
| Level III <i>Conservation, Restriction, Regulation</i> | Supply no longer meets demand. Social and economic impacts are experienced. <i>Target: Reduce/manage water demands to the maximum extent (ex: amend PTTW, new by-laws)</i> |

The declaration of a Level III Low Water condition does not automatically constitute a municipal emergency declaration and does not independently impose mandatory restrictions on water use. Rather, it signifies severe regional drought conditions requiring enhanced conservation efforts and coordinated response measures.



Currently, there are 2 low water indicators: precipitation and water flow. Three-month and eighteen-month averages of these indicators are compared against long-term historical records to determine whether watershed conditions meet the thresholds for Level I, II, or III Low Water conditions (Table 2).

In addition to the provincial indicators, SNC incorporates supplementary information, including groundwater conditions, ecological indicators, reported impacts, and local observations, to support drought assessments and Water Response Team discussions.

Table 2: Ontario Low Water Response Program triggers for low water conditions

| | Level I | Level II | Level III |
|-------------|--|--|--|
| Rain | <80% of the monthly average | <60% of the monthly average | <40% of the monthly average |
| Stream flow | <i>Spring</i> : Monthly flow <100% of the lowest average summer month flow | <i>Spring</i> : <70% of the lowest average summer month flow | <i>Spring</i> : <50% of the lowest average summer month flow |
| | <i>Other times</i> : Monthly flow <70% of the lowest average summer month flow | <i>Other times</i> : Monthly flow <50% of the lowest average summer month flow | <i>Other times</i> : Monthly flow <30% of the lowest average summer month flow |

4.0 South Nation Conservation Water Response Team

4.1 Water Response Team Terms of Reference

March 2003

1. Background

The provincial government has prepared a response plan to deal with low water conditions. *Ontario Low Water Response* was created in 2000 and is intended to ensure provincial preparedness, to assist in coordination and to support local response in the event of a drought. The province provides overall direction and coordinates policies, science and information systems and emergency support. At the local jurisdiction, the emphasis is directed to collecting information, interpreting policy, delivering programs, and responding to emergencies.

Three levels are used to determine drought conditions in a watershed:

- Level I (warning) - confirmed or determined by conservation authorities
- Level II (conservation) - confirmed or determined by Water Response Teams
- Level III (restrictions) - confirmed or determined by Water Response Teams



2. Role of the Water Response Team

Water response teams are focused on reacting to current low water conditions. Long term drought prevention efforts must be developed and are the responsibility of existing water management agencies and users.

South Nation Conservation's Water Response Team (WRT) uses a combination of water data, provincial and local legislation, and communication products to advocate for water conservation. The WRT provides a coordinated response from provincial, conservation authority, private and special interest water managers and users. Members of the team work cooperatively, sharing all information and being accountable. In cases of extreme drought, the WRT ensures that key local and provincial decision-makers participate actively in the process to see that water allocation decisions are understood, supported, and enforced.

3. Areas Outside SNC Watershed

The WRT is mainly setup for the South Nation River jurisdiction and its member municipalities. However, the WRT has invited representation from municipalities which are outside the SNC jurisdiction. Staff support for these municipalities will continue to be provided by the Ministry of Natural Resources (MNR). The MNR will be responsible for coordinating activities outside the SNC jurisdiction.

4. Team Membership

The WRT will include provincial, municipal and conservation authority staff as well as representatives for local interests and users. Team membership will include representation from the following sectors:

- Conservation Authority - 2 members
- Provincial government - 3 members (non-voting members)
 - Ministry of Natural Resources and Forestry
 - Ontario Ministry of Agriculture, Food, and Rural Affairs
 - Ministry of the Environment, Conservation and Parks
- Municipal government - 5 members
 - Stormont Dundas and Glengarry
 - Prescott-Russell
 - Leeds and Grenville
 - City of Ottawa
 - Outside of SNC Watershed
- Agricultural Community - 3 members, including 1 from SNC Clean Water Committee
- Special Interest - 2 members (e.g., Industry, OCWA, Ducks Unlimited, Golf Courses)



SNC will appoint the Committee Chair. SNC Chair and Vice Chair are ex-officio members. Membership may increase or decrease based on approval of the WRT.

Table 3: South Nation Water Response Team

| Name | Agency | Telephone Number | Email Address |
|------------------------------|--|------------------|-----------------------------|
| Adrian Wynands | SNC Board of Directors, Chair | 613-277-4325 | awynands@augusta.ca |
| Bill Smirle | SNC Board of Directors Member | (613) 448-1636 | Wilson.smirle@sympatico.ca |
| Provincial Government | | | |
| Darren Bonenberg | Ministry of Natural Resources | (437) 881-9325 | Darren.Bonenberg@ontario.ca |
| Cory Wiseman (Alternate) | Ministry of Natural Resources | (705) 271-7417 | cory.wiseman@ontario.ca |
| James Peets | Ministry of Environment, Conservation and Parks | (613) 362-9119 | james.peets@ontario.ca |
| Terrence Sauvé | Ontario Ministry of Agriculture, Food and Agribusiness | (613) 676-2460 | Terrence.sauve@ontario.ca |
| Amadou Thiam (Alternate) | Ontario Ministry of Agriculture, | (613) 447-6882 | Amadou.thiam@ontario.ca |



| Name | Agency | Telephone Number | Email Address |
|-------------------------------|--|--|-------------------------------------|
| | Food and Agribusiness | | |
| Municipal Government | | | |
| Robert Bowman | Augusta Township | 613-925-4231 x201 | rbowman@augusta.ca |
| Katherine Beehler | United Counties of Stormont, Dundas, and Glengarry | (613) 932-1515 x1257 | Kbeehler@sdgcounties.ca |
| Pierre Paul Beauchamp | Village of Casselman | (613) 764-3139 x243 | Ppbeauchamp@casselman.ca |
| Tessa Di Iorio | City of Ottawa | (613) 580-2424 x17658 Alt: 613-406-6465 | Tessa.diorio@ottawa.ca |
| Louis Prevost | United Counties of Prescott and Russell | 1-800-667-6307 | louisprevost@prescott-russell.on.ca |
| Agricultural Community | | | |
| Jacqueline Pemberton | Federation of Agriculture | (613) 720-4756 | Pemberton.jacqueline@gmail.com |
| Terry Otto | Federation of Agriculture | (613) 821-1428 | Otto@ncf.ca |
| Special Interest | | | |



| Name | Agency | Telephone Number | Email Address |
|---|---|------------------|------------------------|
| Dawn Crump | Ontario Clean Water Agency | (613) 223-2207 | Dcrump@ocwa.com |
| South Nation Conservation Staff | | | |
| Ronda Boutz, Secretary-Treasurer | South Nation Conservation (613) 984-2948 | | Rboutz@nation.on.ca |
| Sandra Mancini, Managing Director, Natural Hazards and Infrastructure | | | Smancini@nation.on.ca |
| John Mesman, Managing Director, Property, Conservation Lands, and Community Outreach | | | Jmesman@nation.on.ca |
| Katherine Watson, Coordinator, Early Warning Systems and Watershed Plans | | | Kwatson@nation.on.ca |
| Phillip Dagenais, Water Resources Specialist - Monitoring | | | pdagenais@nation.on.ca |
| Arielle Noonan, Stewardship Assistant | | | anoonan@nation.on.ca |



5. Functions of the Committee:

Responsibilities for team members include attending meetings, communicating back to their sector, sharing relevant data, and using drought management tools. Specifically, the WRT will:

- Characterize the watershed
- Identify local water supply needs and concerns
- Identify severity of low water situation/condition
- Recommend water conservation and preservation
- Evaluate effectiveness of local actions
- Provide advice to local provincial decision-makers
- Apply for provincial funding for drought related expenses and projects

6. Frequency of Meetings

- Level I - In consultation with the chair, once a Level I drought condition has been confirmed or determined by SNC, the WRT will be circulated information on watershed conditions and recommended action (i.e., press release, voluntary conservation). SNC staff will continue monitoring watershed conditions and keep the WRT informed.
- Level II - In consultation with the chair, when conditions warrant, the WRT will meet to confirm or determine a Level II drought condition and appropriate action.
- Level III - In consultation with the chair, when conditions warrant, the WRT will meet to discuss asking the province to confirm or determine a Level III drought condition.

7. Administrative Procedures:

- Volunteer members of the Committee will be paid mileage in accordance with current rates of SNC. Mileage will be paid annually only if there is funding available from the MNR for drought related expenses.
- Decisions of the Committee will be reached by parliamentary procedure.
- Minutes of all meetings will be recorded by SNC staff and distributed to the Committee members for review 1 week prior to the next meeting (whenever possible).



- Meeting agendas will be distributed in advance (whenever possible), complete with appropriate background information of agenda items. The agenda will be prepared and distributed by SNC staff, with consultation with the WRT Chair.
- Telephone or written (fax, email) votes may be accepted at the discretion of the Chair in the case of straight forward decisions to be made which do not justify a meeting.

5.0 SNC Low Water Response System

The goals of SNC's Low Water Response System are to:

- Reduce the risk of water quantity issues and associated socioeconomic impacts through the issuance of timely Low Water Advisories;
- Provide accurate and up-to-date information regarding watershed conditions to municipalities, provincial agencies, stakeholders, and the public; and
- Support coordinated drought response and water conservation efforts across the watershed.

To achieve these goals, SNC maintains the following Low Water Response System components.

Monitoring Network and Data Collection System

SNC, in partnership with the Ontario Ministry of Natural Resources and Environment and Climate Change Canada (ECCC), maintains a network of stream gauges, precipitation gauges, groundwater monitoring wells, and other environmental monitoring stations throughout the watershed. Data collected through this network is used to assess hydrologic conditions, monitor trends, and evaluate the severity of drought conditions across the jurisdiction.

In addition to the provincial low water indicators, SNC may consider supplementary information such as groundwater levels, ecosystem health indicators, water quality observations, vegetation stress, agricultural impacts, and local field observations when assessing drought conditions and potential impacts.

Monitoring activities may also include field inspections, communication with municipalities, stakeholders, and residents, and review of reported impacts such as dry wells, reduced streamflow, or environmental stress.



Daily Planning Cycle

SNC maintains a Daily Planning Cycle consisting of routine monitoring and assessment activities intended to identify developing low water conditions in a timely manner. The Daily Planning Cycle includes:

- Daily collection and review of water level and streamflow data using standardized thresholds;
- Daily review of weather forecasts, precipitation forecasts, and temperature conditions;
- Review of supplemental groundwater and environmental monitoring information; and
- Ongoing assessment of watershed trends and reported impacts.

Duty Officer

The SNC Duty Officer is the designated staff member responsible for carrying out the Daily Planning Cycle and coordinating internal communication regarding low water conditions. Contact information for SNC staff and Duty Officers is provided in Appendix A.

Water Response Team

During low water conditions, SNC convenes and communicates regularly with the Water Response Team (WRT). The WRT includes representatives from municipalities, provincial ministries, agricultural organizations, environmental agencies, water users, and other stakeholders.

The WRT provides local knowledge, reviews watershed conditions and reported impacts, supports drought response discussions, and assists in developing coordinated conservation messaging and response recommendations.

Provincial ministry representatives participating on the WRT provide technical guidance and advice regarding available regulatory tools, conservation strategies, emergency management coordination, and ministry-specific programs.

Messaging

Section 6 provides details on standardized messaging. SNC will make every effort to issue Low Water Advisory messages with sufficient lead time to allow municipalities, residents, businesses, agricultural operations, and water users to respond appropriately to changing conditions. Messaging may include:

- Watershed condition updates;
- Low Water Advisory declarations;
- Water conservation recommendations;
- Information regarding potential impacts;
- Requests for voluntary conservation measures;
- Guidance regarding non-essential water use restrictions; and
- Coordination with municipalities and partner agencies regarding drought response



actions.

6.0 Standardized Messaging

Three types of drought messages may be issued by SNC depending on the situation, (see Table 1). They will be issued by e-mail using an annually updated emergency contact list and made available on social media platforms and SNC’s website: www.nation.on.ca.

The colour coordinated Provincial icon is included on the statements.

- Level I Low Water Advisory – Yellow
- Level II Low Water Advisory – Orange
- Level III Low Water Advisory – Red

SNC DECLARES A [LEVEL 1/LEVEL 2/LEVEL 3] LOW WATER ADVISORY

[mm/dd/yyyy]

Jurisdiction of advisory and overview of risk.



Current Conditions:

Current conditions in the jurisdiction which include water levels, precipitation, soil conditions, and/or current low water issues or concerns.

The weather conditions forecasted by Environment and Climate Change Canada. Includes information such as approximate precipitation and temperature changes.

Recommended Actions:

Caution to residents on what to do in the time period of this statement.

Duration:

The period which this statement will be in effect for.

Next Steps:

SNC monitors the water levels, precipitation and weather forecasts as part of the Low Water Response Program. Updates are provided as conditions change.

South Nation Conservation Contact:

Duty Officer

Duty Officer email | 1-877-984-2948.

Figure 2: Example of a Low Water Advisory message



DRAFT



7.0 Municipal Contact Information

Sixteen municipalities make up the SNC jurisdiction from the United Counties of Prescott-Russell, United Counties of Stormont, Dundas and Glengarry, United Counties of Leeds and Grenville, and the City of Ottawa. **Table 4** lists the municipalities within the region.

Table 4: Contact information for the municipalities within SNC jurisdiction

| Municipality | Address | Phone | Fax |
|-----------------------|---|----------------|----------------|
| Alfred-Plantagenet | 205 Old Highway 17, P.O. Box 350, Plantagenet, ON K0B 1L0 | (613) 673-4797 | (613) 673-4812 |
| Casselman | 751, rue St-Jean, P.O. Box 710 Casselman ON K0A 1M0 | (613) 764-3139 | (613) 764-5709 |
| Champlain | 948 Pleasant Corner Road E, Vankleek Hill, ON K0B 1R0 | (613) 678-3003 | (613) 678-3363 |
| Clarence-Rockland | 1560 Laurier Street, Rockland, ON, K4K 1P7 | (613) 446-6022 | (613) 446-1497 |
| La Nation | 958 Route 500 West, Casselman ON K0A 1M0 | (613) 764-5444 | (613) 764-3310 |
| Russell | 717 Notre-Dame Street, Embrun, ON, K0A 1W1 | (613) 443-3066 | (613) 443-1042 |
| Augusta | 3560 County Road 26, R.R. #2, Prescott, ON, K0E 1T0 | (613) 925-4231 | (613) 925-3499 |
| Edwardsburgh-Cardinal | 18 Centre Street, P.O Box 129 Spencerville, ON, K0E1X0 | (613) 658-3055 | (613) 658-3445 |
| Elizabethtown-Kitley | 6544 New Dublin Road Addison, ON, K0E 1A0 | (613) 345-7480 | (613) 345-7235 |
| North Grenville | 285 County Road #44, P.O. Box 130, Kemptville, ON K0G 1J0 | (613) 258-9569 | (613) 258-9620 |
| North Dundas | 636 St. Lawrence Street, P.O. Box 489, Winchester, ON K0C 2K0 | (613) 774-2105 | (613) 774-5699 |
| North Glengarry | 90 Main Street P.O. Box 700 Alexandria, ON K0C 1A0 | (613) 525-1110 | (613) 525-1649 |



| Municipality | Address | Phone | Fax |
|--|---|--|----------------|
| North Stormont | 15 Union Street, P.O. Box 99 Berwick, ON, K0C 1G0 | (613) 984-2821 | (613) 984-2908 |
| South Dundas | 34 Ottawa Street P.O. Box 740 Morrisburg, Ontario, K0C 1X0 | (613) 543-2673 | (613) 543-1076 |
| South Stormont | P.O. Box 84, 2 Mille Roches Road, Long Sault, ON K0C 1P0 | (613) 534-8889 | (613) 534-2280 |
| City of Ottawa | 110 Laurier Avenue West, Ottawa, ON, K1P 1J1 | (613) 580-2400 or (866) 261-9799 | (613) 230-5808 |
| United Counties Leeds Grenville | 25 Central Ave., W., Suite 100, Brockville, ON, Canada, K6V 4N6 | (613) 342-3840 | (613) 342-2101 |
| United Counties Prescott Russell | 59 Court Street, P.O. Box 304, L'Original, ON, K0B 1K0 | (613) 675-4661 | (613) 675-1007 |
| United Counties Stormont, Dundas Glengarry | 26 Pitt Street, Cornwall, ON K6J 3P2 | (613) 932-1515 | (613) 936-2913 |

South Nation Conservation maintains an Emergency Contact list containing media outlet information, municipality contacts, and neighboring conservation authority contact information.



7.1 Current Municipal By-laws

During a low water condition, the municipalities are asked to activate their water conservation by-laws, if available. **Table 5** summarizes the current by-laws and their requirements.

Table 5: Water conservation by-laws of the municipalities within SNC jurisdiction

| Municipality | By-Law Number | Requirements |
|------------------------|---------------|---|
| Alfred and Plantagenet | #86-97 | Summer Watering by-law Between June 1st and September 30th: Residents in odd numbered buildings shall be permitted to water lawns and gardens on odd numbered days between 7-10pm. Residents even numbered buildings shall be permitted to water lawns and gardens on even days between the hours of 7-10pm. |
| Clarence Rockland | #2000-43 | Prohibit Wrongful Use of Water: No person shall run water wastefully as supplied by water works. No person shall water newly installed grass until a permit has been issued. <ul style="list-style-type: none"> Urban area: Between May 1st and September 30th, odd civic addresses allowed to water lawns etc. 'Tuesday, Thursday, and Saturday' between 8-10pm. Properties with even civic addresses allowed to water lawns etc. on 'Monday, Wednesday and Friday' between 8-10pm. Hamlet area: between May 1st and September 30th, no watering lawns, gardens or flowers, no public car wash, no filling of privately owned swimming pools through water works. No person may fill up privately owned swimming pools by water works. |
| Nation | #63-2003 | Watering: Between June 1 st and September 30 th , persons at odd numbered buildings are permitted to water on odd numbered days between 7-10 pm. Persons at even numbered buildings are permitted to water on even numbered days of the month between 7 and 10 pm. Persons watering manually are permitted to water at any time. Total ban on watering may occur in emergency situations such as a drought, etc. |
| South Dundas | #2006-41 | Conditions of Water Use: The use of water irrigation is limited between the hours 7pm-7am. The water use for |



| Municipality | By-Law Number | Requirements |
|----------------|---------------|---|
| | | <p>irrigation shall not exceed five hours in a twenty-four-hour period. Irrigation is restricted to even numbered houses watering on even numbered days of the month and odd numbered houses may water on odd numbered days of the month. The Township may by resolution restrict outdoor water usage as and when deemed necessary.</p> |
| Casselman | #2001-032 | <p>Lawn Watering: Year-round, residents having even-numbered civic addresses may lawn/garden sprinkle on Monday and Thursday from 7-8 pm only. Residents having odd-numbered civic addresses may lawn/garden sprinkle on Tuesday and Friday from 7-8pm only. Lawn watering is prohibited at all times on Wednesday, Saturday and Sunday.</p> |
| Russell | #84-99 | <p>Water Restrictions: Year-round, odd-numbered homes may water lawns, etc. on Tuesdays and Thursdays between 7-9pm. Even-numbered homes may water lawns, etc. on Mondays and Wednesdays between 7-9pm. Watering or car washing may be done at any time with a handheld hose. The Superintendent is authorized to suspend all lawn or garden sprinkling entirely.</p> |
| South Stormont | #2007-18 | <p>Water Restrictions: Water use for Landscape and Irrigation purposes are restricted to even numbered houses watering on even numbered days of the month and odd numbered houses may water on odd numbered days of the month between the hours of 6:00 pm and 10:00 am. No person shall use or permit to use municipal water for landscape irrigation or the filling/refilling of swimming pools except as follows:</p> <ul style="list-style-type: none"> • A person may water flowers, shrubs, trees or vegetables on days other than and including their designated Watering Day, provided the watering is done using a hand-held container. • Commercial Garden Nurseries and Commercial car washes and car dealerships conducting business in the Township may use municipal water for the purpose of conducting business. |



| Municipality | By-Law Number | Requirements |
|----------------|---------------|--|
| | | <ul style="list-style-type: none"> All public recreational parks, if failure to water will result in permanent loss of plant material or adversely affect public safety, may use municipal water as deemed necessary. Other uses as identified by the Public Works Manager or designate may use municipal water as deemed necessary from time to time. <p>The Public Works Manager, by public announcement, may impose further temporary water conservation restrictions as required.</p> |
| North Stormont | #64-2021 | <p><i>No Water Usage of Municipal Waterworks Between June 1st and September 30th, except for the following:</i></p> <ul style="list-style-type: none"> Residents in even numbered buildings shall be permitted to water lawns, gardens, flowers, hedges or any other vegetation outside any building between 7-10pm on Mondays, Wednesdays and Fridays. Residents in odd numbered buildings shall be permitted to water between the hours of 7-10pm on Tuesdays, Thursdays and Saturdays. No watering on Sundays. Persons watering manually shall be permitted to water lawns, gardens, flowers, hedges or any other vegetation outside any building. A contractor that needs to take water from a fire hydrant in order to perform work in the Township must contact the water operator in charge. Newly installed sod: a person may send a written request for exemption of this by-law to the Municipal Clerk. If approved, newly installed sod may be watered between 7:00 p.m. and 10:00 p.m. for a period of 7 days. In the event of emergency conditions, the Township may suspend any exemption as set out in section 3 and 4 of By-Law #64-2021 and notice of the declaration of emergency conditions shall be sent to all affected residents by bulk mail. |



| Municipality | By-Law Number | Requirements |
|---------------------------|----------------------|--|
| North Grenville | | Do not have any water conservation by-laws in place. They will institute measures at the time of an incident if and when required. |
| Elizabethtown Kitley | | Do not have any water conservation by-laws in place. They will institute measures at the time of an incident if and when required. |
| Edwardsburgh- Cardinal | | Do not have any water conservation by-laws in place. They will institute measures at the time of an incident if and when required. |
| Champlain | | Do not have any water conservation by-laws in place. They will institute measures at the time of an incident if and when required. |
| Augusta | | Do not have any water conservation by-laws in place. They will institute measures at the time of an incident if and when required. |



Appendix A

Table 1: South Nation Conservation Staff Directory

| | BUSINESS | CELLULAR | E-MAIL |
|---|-----------------|-----------------|------------------------|
| Sandra Mancini <i>Managing Director, Natural Hazards and Infrastructure</i> | (613) 984-2948 | (613) 551-3242 | smancini@nation.on.ca |
| John Mesman <i>Managing Director, Property, Conservation Lands, and Community Outreach</i> | (613) 984-2948 | (343) 803-3417 | jmesman@nation.on.ca |
| Katherine Watson <i>Coordinator, Early Warning Systems and Watershed Plans</i> | (613) 984-2948 | (343) 803-3733 | kwatson@nation.on.ca |
| Phillip Dagenais <i>Water Resource Specialist – Monitoring</i> | (613) 984-2948 | (343) 505-0197 | pdagenais@nation.on.ca |
| Arielle Noonan <i>Stewardship Assistant II</i> | (613) 984-2948 | 343-803-3725 | anoonan@nation.on.ca |
| Erin Thorne <i>Communications Specialist</i> | (613) 984-2948 | (613) 551-7158 | ethorne@nation.on.ca |



Appendix B

Ontario Low Water Response Plan

DRAFT

ONTARIO LOW WATER RESPONSE

DRAFT

**Ontario Ministry of Natural Resources
Ontario Ministry of Environment
Ontario Ministry of Agriculture and Food
Ontario Ministry of Municipal Affairs and Housing
Ontario Ministry of Enterprise, Opportunity and Innovation
Association of Municipalities of Ontario
Conservation Ontario**

REVISED July 2003

PREFACE

In recent years southwestern and eastern Ontario have experienced extended periods of low rainfall and high temperatures. These weather conditions resulted in some of the lowest surface water levels and driest soils recorded for several decades.

Historically, periods of dry weather and low water levels or drought are relatively uncommon in Ontario (about every 10-15 years). However, recent studies on changing weather patterns indicate that low water levels may become more common, potentially compounded by the province's steadily increasing demands for water.

Therefore, the provincial government has decided to prepare, for the first time in its history, a response plan to deal with low water conditions. *Ontario Low Water Response* is intended to ensure provincial preparedness, to assist in co-ordination and to support local response in the event of a drought.

DRAFT

EXECUTIVE SUMMARY

Ontario Low Water Response is intended to ensure provincial preparedness, to assist in coordination and to support local response in the event of a drought. This plan is based on existing legislation and regulations and builds on existing relationships between the province and local government bodies.

Ontario has experienced lower than average precipitation and low water levels since 1998. Some Great Lake water levels (Superior, Huron) have been lower than they have been for many years, and tributary flow has decreased. Groundwater levels may also have been decreasing.

In May 1999, the Provincial Low Water Level Response Task Force was formed to coordinate an inter-ministry response to low water levels and make recommendations for long-term management of low water conditions. The task force recommended that the government develop a provincial low water level plan by March 2000. The ministries involved set up a project team to develop the low water response plan.

Ontario Low Water Response has been produced to ensure that the province is prepared in case of low water conditions. This plan recognizes the partnership between provincial and local authorities and that natural resource and environmental management must be approached at both the provincial and local levels. The province provides overall direction and coordinates policies, science and information systems. In extreme circumstances support is provided where local declarations of an emergency have been made. At the local jurisdiction, the emphasis of this response plan is directed to collecting information, interpreting policy and delivering programs to minimize the effects of low water conditions.

This document provides definitions of drought and low water and describes the means for measuring and quantifying drought and the conditions leading up to it. Three condition levels are described: Level I (Conservation), Level II (Conservation, Restriction) and Level III (Conservation, Restriction, Regulation). Precipitation and streamflow indicators, used to determine the condition level for watersheds, are identified. Thresholds for these indicators are provided and the methodology for determining when an area of the province passes from one level to another is described.

The roles and responsibilities of the province and its agencies are described. Under this plan the Ontario Water Directors' Committee will form a standing Low Water Committee which will become active when any watershed enters a Level II condition. This plan also provides detail on the response process at the local level. This includes the creation of local Water Response Teams and their membership, roles and responsibilities.

ONTARIO LOW WATER RESPONSE

TABLE OF CONTENTS

| | |
|--|-----------|
| PREFACE | i |
| EXECUTIVE SUMMARY | ii |
| <i>LIST OF TABLES & FIGURES</i> | <i>iv</i> |
| <i>FIGURES</i> | <i>iv</i> |
| 1. CONTEXT | 1 |
| 1.1 <i>The Spectrum of Water Management</i> | <i>1</i> |
| 1.2 <i>Provincial and Local Management</i> | <i>1</i> |
| 1.3 <i>Existing Legislation and Information</i> | <i>1</i> |
| 1.4 <i>Emergency Response</i> | <i>2</i> |
| 2. MONITORING AND REPORTING ON DROUGHT | 2 |
| 2.1 <i>Definition – Drought/Low Water</i> | <i>2</i> |
| 2.2 <i>Indicators</i> | <i>3</i> |
| 2.3 <i>Monitoring and Reporting</i> | <i>7</i> |
| 3. PROVINCIAL RESPONSE | 8 |
| 3.1 <i>Principles</i> | <i>8</i> |
| 3.2 <i>Agency Roles and Responsibilities</i> | <i>8</i> |
| 3.3 <i>Response Framework</i> | <i>10</i> |
| 3.4 <i>The Ontario Water Directors’ Committee (OWDC) Low Water Committee</i> | <i>12</i> |
| 3.5 <i>Priority Water Uses</i> | <i>12</i> |
| 4. LOCAL WATERSHED RESPONSE | 13 |
| 4.1 <i>Water Response Teams</i> | <i>13</i> |
| 4.4 <i>Water Response Team Membership and Roles</i> | <i>14</i> |
| 5. COORDINATION AND ADMINISTRATION | 17 |
| 5.1 <i>Water Response Team Action Plan</i> | <i>17</i> |
| 5.2 <i>Future Refinements</i> | <i>23</i> |

| | |
|--|-----------|
| 6. SUMMARY | 24 |
| Appendix 1: Existing Legislation..... | 25 |
| Appendix 2: Additional Technical Information..... | 32 |
| Appendix 3: Project Development Team (1999) | 39 |

LIST OF TABLES & FIGURES

TABLES

| | |
|--|----------|
| <i>Table 1: Summary of Indicators</i> | <i>4</i> |
| <i>Table 2: Precipitation Thresholds</i> | <i>5</i> |
| <i>Table 3: Streamflow Thresholds</i> | <i>6</i> |
| <i>Table 4: Summary of Levels and Thresholds</i> | <i>6</i> |

FIGURES

| | |
|--|-----------|
| <i>Figure 1: Information Flow.....</i> | <i>7</i> |
| <i>Figure2: Organizational Links</i> | <i>18</i> |

ONTARIO LOW WATER RESPONSE

1. CONTEXT

Fresh water is a natural resource crucial to the economic and environmental well being of Ontario. Water supports almost all aspects of human activity including health, industrial development, and recreation. Because water is critical to so much of our activity, it is managed from several perspectives and by many jurisdictions, groups and individuals.

1.1 The Spectrum of Water Management

Ontario Low Water Response is a response plan that deals with the low water end of the spectrum of water management issues, which varies from flood through normal to low water conditions. This plan is for mitigating the effects of drought through the implementation of short-term, low-water management strategies. These complement the long-term approaches that manage both water supply and demand. Long-term approaches include public education, conservation, the development of appropriate land use policies, and efficient water management infrastructures such as reservoirs and aquifer recharge facilities.

1.2 Provincial and Local Management

Ontario is large and geographically diverse. One area can have high water levels while another is dealing with lower than normal water levels. In the summer of 1999, for example, southwestern Ontario had near record-low water levels while above average rainfall in some parts of northwestern Ontario resulted in normal river and lake levels.

Natural resource and environmental management must be approached at two scales - provincial and local. The province provides overall direction and coordinates policies, science, information systems, and emergency support. At the local jurisdiction scale, the emphasis is placed on collecting information, interpreting policy, delivering programs, and responding to emergencies.

Ontario Low Water Response reflects this historical partnership between the province and local jurisdictions. Much of Ontario, organized on a municipality and Conservation Authority basis, has the institutions and the will to effectively deal with low water conditions at both scales.

1.3 Existing Legislation and Information

Ontario Low Water Response is based on existing legislation and regulations. This plan has been developed using existing science, data collection networks, and analysis processes. It can be implemented under established legal authorities (see Appendix 1) such as the *Municipal Act*, the *Lakes and Rivers Improvement Act* and the *Ontario Water Resources Act*. As is the case with developing and implementing any plan, especially one for unusual or emergency situations, this plan will be improved over time based on experiences.

1.4 Emergency Response

This plan does not address “emergency” response measures as defined by the *Emergency Plans Act*. The declaration of any Level condition and any subsequent response does not imply municipal or provincial compensation for economic losses.

2. MONITORING AND REPORTING ON DROUGHT

This section provides a definition of drought, the means of measuring and quantifying drought and the conditions leading to it. For additional technical information see Appendix 2.

2.1 Definition – Drought/Low Water

Drought is a complex term that has various definitions depending on individual perspectives. In this document, drought is defined as weather and low water conditions characterized by one or more of the following:

- a) below normal precipitation for an extended period of time (3 months or more), potentially combined with high rates of evaporation, can lower lake levels, streamflows and/or baseflows and reduce soil moisture and/or groundwater storage,
- b) streamflows are at the minimum required to sustain aquatic life while meeting only high priority demands for water; water wells becoming dry; surface water in storage allocated to maintain minimum streamflows, and
- c) socioeconomic effects occurring on individual properties and extending to larger areas of a watershed or beyond.

As larger areas are affected and as low water and precipitation conditions worsen, the effects usually become more severe.

Three Levels of Low Water Conditions

The Level I condition is the first indication of a potential water supply problem. Level II indicates a potentially serious problem. Level III indicates the failure of the water supply to meet the demand, resulting in progressively more severe and widespread socioeconomic effects.

Each level requires a water management response from the local Water Response Team or the province. The authority learning of the change in level will alert the other to the condition.

2.2 Indicators

Measuring drought is a complex process requiring the collection of data for variables such as rainfall, streamflow, soil moisture, and water in storage. The Ontario Low Water Response indicators integrate a number of factors and functions, are based on readily available data, are useful over a range of time periods, and allow water managers to speak consistently about water supply. (Refer to Appendix 2 to understand the application of this section.)

This plan currently uses precipitation and streamflow (surface water flow) measurements as the primary indicators for defining low water levels and drought, subject to field verification.

Indicators to measure baseflow, groundwater and aquifer levels are to be developed.

Precipitation Indicators

Precipitation is the most important and convenient indicator. Reviewing the precipitation data and comparing it to trends will warn of an impending water shortage.

Precipitation Indicator 1

The Ministry of Natural Resources (MNR) will compare monthly data from each precipitation station with the average monthly precipitation for that station. These calculations will be made for the previous 18 months (long-term), for the previous 3 months (seasonal) and, under a Level I condition or higher, for the previous month (short-term), with weekly updates.

Precipitation Indicator 2

If a watershed is under a Level I or Level II condition, MNR will add up the number of consecutive weeks that register no rain (less than 7.6mm).

Streamflow Indicator

Gauges in streams measure water levels and are used to provide indicators to show there is enough streamflow in the river to meet the basic needs of the ecosystem and to show that water is available for other uses such as recreation, hydropower generation or irrigation.

MNR will compare the monthly flow for each streamgauge station with the lowest average summer month flow for that station.

TABLE 1: Summary of Indicators

| Precipitation | Surface Flow |
|--|---|
| 1) % of average = monthly precipitation/ average precipitation for that month x 100 (See App. 2) | % of average precipitation = $\frac{\text{Monthly Flow}}{\text{Lowest Average Summer Month Flow}} \times 100$ |
| 2) Weeks with less than 7.6mm of rain (number of consecutive readings) | (See App. 2) |

Moving from one level to another

If the indicator for precipitation or streamflow crosses a threshold, then a watershed, or a portion of it, may warrant a change to a Level I, Level II, or Level III condition. Level III designation also requires documentation of ongoing and significant social, environmental and economic impacts and is further detailed in (Section 3.3 Response Framework, Level III.)

A water response is undertaken when a watershed condition changes. When a threshold is crossed, usually the Province alerts the Conservation Authority to the change. The values of thresholds have been set for precipitation and streamflow at selected stations. Indicators will be monitored and reviewed periodically to determine if the thresholds are set at the correct levels.

Precipitation thresholds

A watershed may warrant a change to Level I when its 3 month or 18 month total precipitation drops below 80% of the average 3 month or 18 month precipitation for those months.

From an existing Level I or Level III condition a watershed may warrant a change to Level II when its 3 month or 18 month total precipitation is between 60% and 40% of the average 3 month or 18 month precipitation for those months or when its 1-month total precipitation is between 60% and 40% of the average precipitation for that month. An additional indicator is used when a watershed is already in Level I - a watershed may warrant a change to Level II if it has had no rain (less than 7.6mm) for 2 weeks in succession (high demand areas) or for 3 weeks in succession (moderate demand areas).

From an existing Level II, a watershed may warrant a change to Level III when its:

- 3 month or 18 month total precipitation drops below 40% of the average 3 month or 18 month precipitation for those months or;
- 1 month total precipitation drops below 40% of the average precipitation for that month

TABLE 2: Precipitation Thresholds

| Level I | Level II* | Level III** |
|---|---|---|
| 18-month precipitation < 80% of average precipitation or 3 month precipitation < 80% of average precipitation | 18 month precipitation < 60% of average precipitation or 3 month precipitation < 60% of average precipitation or 1 month precipitation < 60% of average precipitation Weeks with less than 7.6mm of rain – more than 1 week for high demand areas; more than 2 weeks for moderate demand areas | 18 month precipitation < 40% of average precipitation or 3 month precipitation < 40% of average precipitation or 1 month precipitation < 40% of average precipitation |

* A watershed can enter a Level II only from an existing confirmed Level I or Level III condition

** A watershed can enter a Level III only from an existing confirmed Level II condition

Streamflow

In the spring (see Appendix 2 Spring Indicator), a watershed may warrant a change to Level I when its monthly flow drops below the lowest average summer month flow for that station (see Appendix 2 Streamflow Indicator paragraph 2). For the rest of the year the watershed may warrant a change to Level I when its monthly flow drops below 70% of the lowest average summer month flow.

In the spring, a watershed may warrant a change to Level II (from an existing Level I condition or Level III) when its monthly flow is between 70% and 50% of the lowest average summer month flow. For the rest of the year, the watershed may warrant a change to Level II if its monthly flow is between 50% and 30% of the lowest average summer month flow.

In the spring, a watershed may warrant a change to Level III (from an existing Level II condition) when its monthly flow drops below 50% of the lowest average summer month flow.

For the rest of the year, the watershed may warrant a change to Level III if its monthly flow drops below 30% of the lowest average summer month flow.

TABLE 3: Streamflow Thresholds

| Level I | Level II* | Level III** |
|--|---|---|
| <p>Spring: – monthly flow < 100% lowest average summer month flow</p> <p>Other times: – monthly flow < 70% of lowest average summer month flow</p> | <p>Spring:– monthly flow < 70% of lowest average summer month flow</p> <p>Other times: – monthly flow < 50% of lowest average summer month flow</p> | <p>Spring:– monthly flow < 50% of lowest average summer month flow</p> <p>Other times: – monthly flow < 30% of lowest average summer month flow</p> |

* A watershed can enter a Level II only from an existing confirmed Level I or Level III condition

** A watershed can enter a Level III only from an existing confirmed Level II condition

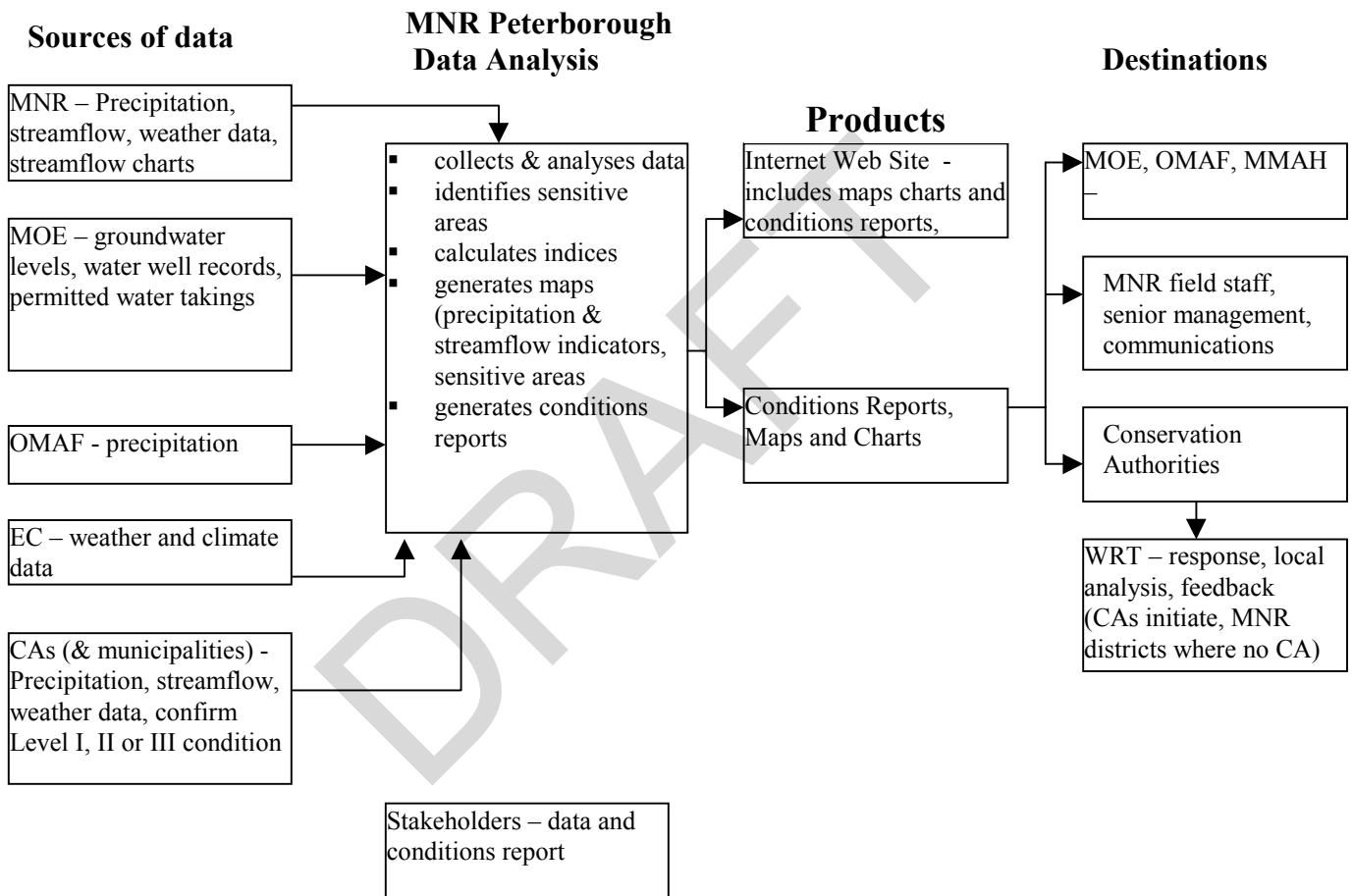
TABLE 4: Summary of Levels and Thresholds

| Condition | Indicator | |
|-----------|------------------------------------|---|
| | Precipitation | Streamflows |
| Level I | <80% of average | <p>Spring: – monthly flow < 100% lowest average summer month flow</p> <p>Other times: – monthly flow < 70% of lowest average summer month flow</p> |
| Level II | <60% of average weeks with < 7.6mm | <p>Spring:– monthly flow < 70% of lowest average summer month flow</p> <p>Other times: – monthly flow < 50% of lowest average summer month flow</p> |
| Level III | <40% of average | <p>Spring:– monthly flow < 50% of lowest average summer month flow</p> <p>Other times: – monthly flow < 30% of lowest average summer month flow</p> |

2.3 Monitoring and Reporting

Figure 1 shows the participants, data sources, products and information flow for drought monitoring. Data is provided to MNR, which analyzes it and produces and distributes condition reports and maps. Feedback is provided to MNR on local conditions as well as when water management responses are undertaken.

FIGURE 1: INFORMATION FLOW



CAs- Conservation Authorities
 WRT- Water Response Team
 EC – Environment Canada

3. PROVINCIAL RESPONSE

3.1 Principles

Ontario Low Water Response is based on three principles: the response process should be simple and straightforward, low water and drought response is a partnership, and planning is crucial.

a) Simple process

Experience from across the province suggests that effective response happens when there is a straightforward system that sets out clearly who is involved and what their responsibilities are. This plan details a response process for low water conditions. Section 2 sets out how low water information is to be collected and used. Sections 3.3 and 3.4 detail provincial level roles and responsibilities. Section 4 covers local response. Section 5 provides an action plan.

b) Low water and drought response partnership

The response to low water conditions occurs on at least two levels – provincial and local. For example, this plan indicates that the province is responsible for collecting and analyzing information on water levels at the provincial scale. At the local level however, it is the Conservation Authorities, with their local knowledge and experience, that play the major role in providing and interpreting data that is more specific to each watershed.

c) Plan

Low water conditions do not occur in a few hours or even days, but build up over a number of weeks or months. This time factor allows advance preparation, at both the provincial and municipal levels.

3.2 Agency Roles and Responsibilities

The key provincial agencies in water management are the Ministries of Municipal Affairs and Housing; Enterprise, Opportunity and Innovation; Agriculture and Food; Environment; Northern Development and Mines; and Natural Resources. They work in a cooperative, integrated fashion to develop and implement provincial water policy.

These efforts to develop and implement provincial water policy are directed by the Land and Resource Use Committee of Deputy Ministers and are implemented by the existing provincial Ontario Water Directors' Committee (OWDC). This committee is co-chaired by the Water Policy Directors from the Ministries of Natural Resources and Environment. *A project team reporting to this committee prepared Ontario Low Water Response.*

Ministry of Municipal Affairs and Housing (MMAH) is responsible for overseeing such legislation as the *Planning Act*, the *Municipal Act* and the *Public Utilities Act*. The *Planning Act* provides for and supports land development in the organized sections of the province. The appropriate use of this legislation helps ensure that areas critical to the long-term ecological health of aquatic ecosystems are not degraded by changes in land use. The *Municipal* and *Public Utilities Acts* allow municipalities to construct and maintain water supply infrastructures and pass bylaws to regulate water use.

Ministry of Economic Development and Trade (MEDT) plays a leading role in promoting and explaining the government's position and policies on water management issues that cross provincial or national boundaries. Recently, MEDT has represented the province in discussions about bulk water transfers and diversions from the Great Lakes.

Ministry of Agriculture and Food (OMAF) has an important role in the protection of aquatic ecosystems across the rural landscape of Ontario. The ministry supports programs for the agricultural sector that assist in maintaining potable water supplies, supports the use of appropriate irrigation and drainage methods and helps protect surface and groundwater quality.

Ministry of Environment (MOE) administers several pieces of legislation directed at environmental protection, conservation and stewardship of Ontario's resources. In particular, the Ontario Water Resources Act (and companion regulations) is directed at the protection of the quality and quantity of Ontario's surface and groundwater resources. The legislation provides for prohibitions related to the discharging of pollutants to surface or groundwater and water quality standards. The legislation also provides for a permit system that governs the taking of large amounts of surface or groundwater (>50,000 litres per day).

Ministry of Natural Resources (MNR) has two primary focuses in water management: managing surface water flows and levels and protecting fish and wildlife habitat. In many areas MNR is directly responsible for operating water control structures. The major pieces of legislation this ministry oversees include the *Lakes and Rivers Improvement Act* (regulates location, design and operation of dams and other water structures), the *Public Lands Act* (authorization of water power sites), some aspects of the federal *Fisheries Act*, the *Conservation Authorities Act* (supporting legislation for the province's 38 watershed-based Conservation Authorities), the *Fish and Wildlife Conservation Act* and the *Crown Forest Sustainability Act*. Under the *Emergency Plans Act*, MNR is listed as the lead agency for large-scale flooding, fire and drought emergencies.

Although MMAH, MEDT, OMAF, MOE and MNR are the five provincial agencies with various leadership roles in water management, other agencies and organizations are also involved in water issues. The Ministry of Northern Development and Mines has a responsibility for setting policy regulating mine waste control structures, and the Ministry of Transportation is involved with water crossing standards. In addition, the federal government has legislation, such as the

Fisheries Act and the *Navigable Waters Protection Act*, that must be considered in any approach to water management.

Municipalities and Conservation Authorities also have discrete water management responsibilities, which require them to be included in any low water and drought response.

3.3 Response Framework

This plan provides that:

- a) In the organized areas of the province where Conservation Authorities exist, the local Conservation Authority will establish a water response team (WRT) if Level I conditions are confirmed. Other areas may want to establish these teams as a precautionary measure.
- b) In organized areas with no Conservation Authorities, the district office of the Ministry of Natural Resources establishes a WRT if Level I conditions are confirmed.
- c) In unorganized areas, the Ministry of Natural Resources maintains responsibility for water management issues, and deals directly with local communities, First Nations and dam owners/operators and other stakeholders.
- d) The Ontario Water Directors' Committee (OWDC) shall set up a standing Low Water Committee to interact with any watershed in a confirmed Level II (or greater) condition. The OWDC has designated the position of the Water Resources Section Manager (MNR) to serve as the "Low Water Committee Coordinator". The principal members of the Low Water Committee will be the appropriate Field Directors and Water Directors (or their delegated representatives) of the Ministries of Environment and Energy, Agriculture and Food, Municipal Affairs and Housing and Natural Resources. The OWDC through the Low Water Committee will be responsible for coordinating provincial response efforts.

Conditions Verification

The local Conservation Authority and/or MNR district office will confirm a watershed condition. Once the leading agency (CA or MNR) has confirmed that the watershed(s) has entered a Level I condition the leading agency will make appropriate contacts and host the first WRT meeting. Prior to the first water response team meeting, the leading agency should collect appropriate information that characterizes the watershed. The local WRT should lead discussions with its local groups well in advance of a drought. These discussions would help establish priorities and set up mitigation strategies.

Level I - Voluntary Conservation

The Level I condition will be managed through existing programs of the Conservation Authorities, municipalities and other key provincial agencies with leadership and direction provided by the WRT. The WRT, using a variety of communications tools, will emphasize the need for voluntary water conservation with a target reduction of water use of 10 per cent. District or regional level provincial ministry staff will be part of the WRT.

Level II - Conservation and Restrictions on Non-Essential Use

The watershed's WRT will confirm that a watershed has entered a Level II condition. In this condition the WRT will continue in a leadership role, communicating a strong conservation message and implementing restrictions through the municipalities on non-essential use. At this time, the OWDC Low Water Committee Coordinator will advise the OWDC CoChairs and under their guidance, will activate the Low Water Committee to enhance and reinforce cross-ministry program support. The OWDC Low Water Committee Coordinator will also notify the Provincial Emergency Response Coordinator (MNR) and request commencement of regular briefings with Emergency Measures Ontario regarding any Level II condition.

Level III - Conservation, Restriction, Regulation

The OWDC Low Water Committee is responsible for making declarations of a Level III condition based on the recommendations of the local WRT and advice of the provincial field representatives.

A Level III declaration represents the most severe level condition and corresponding response is designed to mitigate the impending impacts of an escalated drought condition. These may include water use restrictions affecting a range of small and large water users. Consequently, prior to any declaration decision the OWDC Low Water Committee is obligated to ensure that:

1. The WRT has clearly implemented and documented the conservation and reduction efforts taken through the Level I and II strategies and can demonstrate that the majority of the water users have participated in these efforts (including bylaw restrictions by municipalities on non essential uses).
2. Any significant social, environmental and economic impacts arising from current low water conditions have been documented and adequately described.
3. Recommendations have been provided on priorities for water use restrictions and other reduction activities within the watershed.

Following a level III declaration, the OWDC Low Water Committee is obligated to ensure that:

4. Any significant social, environmental and economic impacts arising from the recommended water use restrictions have been documented and adequately described.

The local WRT and the OWDC Low Water Committee will jointly discuss the range and type of implementation measures to be taken. The OWDC Low Water Committee Coordinator will be the liaison with the local WRT Chair(s) as necessary, and with the OWDC CoChairs prior to the declaration of a Level III condition.

3.4 The Ontario Water Directors' Committee (OWDC) Low Water Committee

The Ontario Water Directors' Committee (OWDC) has set up a standing Low Water Committee to interact with any watershed in a confirmed Level II (or greater) condition. The OWDC has designated the position of the Water Resources Section Manager (MNR) to serve as the "Low Water Committee Coordinator." The OWDC Low Water Committee will be comprised of the following:

- i) The existing provincial OWDC membership of Water Policy Directors (or their delegated representatives) from MOE, MNR, OMAF, and MMAH and;
- ii) The Field Directors (or their delegated representatives), of the MNR, MOE, OMAF and MMAH in affected areas with confirmed Level II or greater conditions.

The OWDC Low Water Committee will be linked to WRTs through the local provincial representatives who are members on each WRT team (see section 4.2). In addition, the Low Water Committee Coordinator will liaise with the WRT Chair(s) and the OWDC CoChairs when making joint decisions as required.

The primary tasks of the OWDC through the Low Water Committee will be to:

- Coordinate provincial response to WRT recommendations,
- Ensure that the provincial responsibilities are fulfilled,
- Address recommended water use restrictions (with the advice and support of the WRT).

3.5 Priority Water Uses

When Level III conditions develop, water managers may have to deal with the question of priority use. Various approaches to this difficult situation have been proposed and used in Ontario and in other jurisdictions. A synthesis of these approaches suggests a basic model that can be applied. This model divides water uses into three classes: essential, important and non-essential.

Decisions regarding priority water uses can be facilitated with input from local stakeholders. Ultimately, the goal is to balance efficient use, protection of the resource, and equity among

users. For these reasons decisions on low water and drought response and potential water use restrictions are best made with the support and advice of local water managers and users.

Essential

Essential uses of water deal with human life and health: a reasonable supply of water for drinking and sanitation, water for health care, water for public institutions and public protection (e.g. wastewater treatment, some fire protection, schools) and water necessary for basic ecological functions.

Important

The second category deals with uses important for the social and economic well being of a particular area. This includes activities critical to industrial processes, commercial facilities such as hotels and restaurants and key agricultural crops. This category poses the most difficulty, as it may be necessary to rank priorities between activities and between groups within the same activity (e.g. between farm irrigation and a local car manufacturing plant or between food or non-food agriculture irrigation). Another factor is that priorities will vary between watersheds.

The local water response team should lead discussions with their local groups well in advance of a drought. These discussions would help establish priorities and set up mitigation strategies. For example, depending on the nature of the business it may be economically viable to truck in water.

Non-Essential

Non-essential uses can be interrupted for the short term without significant impact. These include private swimming pools, lawn watering, public and private fountains and vehicle washing. Many Ontario jurisdictions already have bylaws and other controls to deal with this category.

3.6 Long Term Management

Restricting water use is only a short-term solution. Best planning practices and long-term management of supply and demand should provide the foundation for sound water management. Ecological health is considered essential and is covered under basic ecological functions. Long term economic health and welfare of the citizens are intertwined with ecological health. If natural water systems are consistently starved of water major negative effects will be realized. The resulting degradation of the water quality and quantity can have considerable effects on all users.

4. LOCAL WATERSHED RESPONSE

4.1 Water Response Teams

Watershed-based water response teams (WRT) are proposed to coordinate local activities. Teams will consist of local water users and local and provincial water managers. Water response teams will use a combination of water data, provincial and local legislation, communication techniques and local tools to advocate conservation. Success of any WRT depends on local support and commitment to abide by the team's recommendations. In cases of extreme drought, the WRT will ensure that key local and provincial decision-makers participate actively in the process to see that water management decisions are understood, supported and enforced.

Water response teams are focused on reacting to current low water conditions. Long term drought prevention efforts must be developed and are the responsibility of existing water management agencies and users. Drought management will only be successful through this combination of long-term preventive strategies and shorter-term crisis management actions.

4.2. Government and Non Government Agencies

Several existing agencies, policies and statutes in Ontario address water management, including drought. Examples are provincial ministries (Environment and Natural Resources) and Conservation Authorities. WRTs will not replace the functions of these agencies but permit coordination of response among these agencies, non-government groups and users. The WRT does not possess any unique legislative authority but can help by advising on the use of current regulations and tools, such as: the *Ontario Water Resources Act* and *Environmental Protection Act*.

4.3 Scale

Normally, water response teams will be based on watershed boundaries. Conservation Authority boundaries will guide each team's geographic jurisdiction. Where no Conservation Authority exists, the Ministry of Natural Resources will determine the appropriate watershed units. Several watersheds may be combined into larger units or divided into sub watersheds in order to address local conditions for low water response purposes.

4.4 Water Response Team Membership and Roles

The WRT will provide a coordinated response from provincial, Conservation Authority, municipal, private and special interest water managers and users. Members of the teams will work cooperatively, share all information and be accountable.

WRTs will include provincial, municipal and Conservation Authority staff as well as representatives for local interests and users. Team membership will vary, but representation from the following sectors should be considered:

- agriculture
- rural private industry

- business
- recreation
- resource management interests
- First Nations
- municipal government
- provincial government

Certain organizations are required members of the WRT as a result of their organizational mandates, legislative tools, communication abilities and background data. These include:

a) Local municipalities

- May monitor and control public water supplies and can provide useful data on watershed characterization,
- May control water consumption through bylaws,
- Can promote strong water conservation messages,
- Maintain communication links with large local water consumers, specifically commercial and industrial operations,
- Have specific responsibilities under the *Emergency Plans Act*.

b) Local Conservation Authorities

- Maintain detailed water monitoring networks, which will enhance provincial networks and better describe drought variations,
- Are watershed based and maintain data that can be used to characterize the watershed's unique features,
- Maintain strong links with local community groups, media and government and may facilitate coordination of water conservation messages,
- Operate dams and reservoirs,
- Can verify MNR data and low water conditions in the field,
- Administer sections of the Federal *Fisheries Act*,
- Monitoring local stream health and water quality,

c) Ontario Ministry of Natural Resources

- Maintains a provincial network to monitor precipitation and low flow conditions. This data can be provided to WRTs. MNR will also analyze data to provide early warnings.
- Administers portions of the federal *Fisheries Act* and has some legislative authority for maintaining baseflows to protect aquatic life,
- Operates dams and reservoirs,
- Maintains links with local outdoor recreation groups,
- Administers the *Lakes and Rivers Improvement Act*,
- Participates as a representative of the province on WRTs to assist in the implementation and coordination of low water response activities.

d) Ontario Ministry of Environment

- Assists in maintaining a provincial water monitoring network,
- Manages the Permit to Take Water Program (PTTW) under the *Ontario Water Resources Act*. The database of local users can be provided to the WRT to help identify local permitted water use. In cases of extreme drought, MOEE may limit new water takings and recommend new conditions on water takings by existing permit holders
- Maintains communication links with permit holders,
- Administers the *Ontario Water Resources Act* and the *Environmental Protection Act* and has legislative authority to prohibit the discharge of any material that may impair the quality of surface water and groundwater, and to require that no person shall take more than a total of 50,000 litres of water per day without a permit,
- Participates as a representative of the province on WRTs to assist in the implementation and coordination of low water response activities.

e) Ontario Ministry of Agriculture and Food

- Maintains communication links with agricultural water users and can advise groups of potential local drought conditions and water conservation recommendations,
- Can coordinate local agricultural representation on the WRT,
- Participates as a representative of the province on WRTs to assist in the implementation and coordination of low water response activities.

The participation of other local groups and users is also necessary for success of the WRT. Examples include First Nation communities, dominant local industries (e.g. pulp and paper, aggregates, hydroelectric power generators), recreation users (Trent Severn Waterway, downhill ski facilities) or special interest bodies (such as Ontario Federation of Anglers and Hunters, Ducks Unlimited).

There is no distinction in decision-making power or responsibility among members of the WRT with the exception of provincial representatives, (the focus of provincial representatives is on advice rather than participating in the decision making process). Each representative should have equal opportunity for input, sharing information and accountability. It is therefore imperative that the membership of the WRT accurately reflect the balance among the sectors within the watershed.

Responsibilities for team members include attending meetings, communicating back to their sectors, sharing relevant data, and implementing drought management tools (e.g. municipal by-laws, coordinated irrigation, signage, public awareness communications).

In certain regions, Conservation Authorities or municipalities may not exist, and the network of local users may vary significantly. For these reasons WRT membership is intended to be flexible.

Confirming membership, electing a chair and appointing a secretary will be done during initial meetings of the WRT. Teams should not be too big to function. Where they exist, local Conservation Authorities will take the lead in establishing the water response team.

Several watersheds in Ontario already have multi-stakeholder committees that address issues such as local water quality and natural heritage. These committees are encouraged to assume the responsibilities of a WRT if appropriate. They may need to add members.

5. COORDINATION AND ADMINISTRATION

5.1 Water Response Team Action Plan

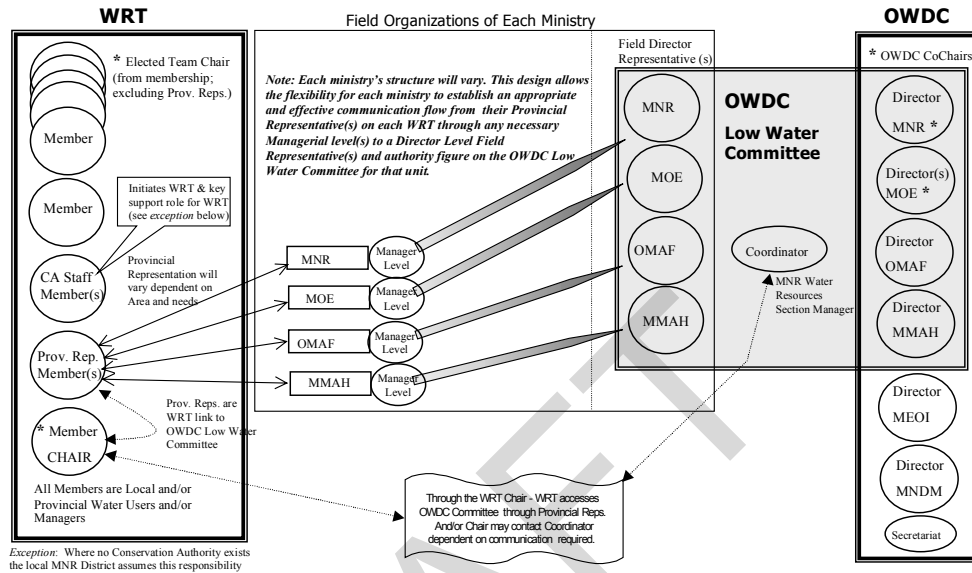
The Ministries of Natural Resources and Environment are responsible for monitoring low water conditions. MNR will notify Conservation Authorities and MNR district offices of potential low water conditions. Conservation Authorities and MNR districts will verify this data with their own monitoring network, as well as consider other information sources in addition to their own monitoring network. The Conservation Authority, and/or MNR will verify the conditions and predetermine watershed characteristics. Following this assessment, Conservation Authorities and/or MNR will confirm a Level I condition. If the leading authority chooses to proceed, it can then establish a WRT.

1. Conservation Authorities and/or MNR Districts will arrange and host the first WRT meeting in order to establish its goals and objectives. These goals and objectives should include:
 - WRT structure,
 - Characterize the watershed,
 - Identify local water supply needs and concerns,
 - Identify severity of low water situation/condition,
 - Implement water conservation, preservation and restriction strategies,
 - Evaluate effectiveness of local actions,
 - Provide advice to local and provincial decision-makers,
 - Consensus building and decision making process.
2. Conservation Authorities and/or MNR Districts confirm or determine if the watershed is in a Level I condition. The WRT will confirm or determine if the watershed is in a Level II condition based on the monitoring network data.
3. The WRT is responsible for making recommendations of a Level III condition to the OWDC Low Water Committee based on watershed conditions which must include information as outlined in Section 3.3. These recommendations can be presented through the Provincial Government Representatives or the local WRT Chair as necessary can communicate them directly to the OWDC Low Water Committee Coordinator (see Figure 2).

4. WRT will complete its membership as suggested in Section 4.2.
5. WRT will elect a chair and secretary from its membership (provincial representatives excluded).
6. WRT will develop its terms of reference, detailing mandate, membership, roles (chair, secretary), meeting frequency, quorum conditions and team and external communications needs.
7. WRT will develop a brief summary of existing information that characterizes the watershed, which generally describes supply and demand conditions. The summary will help the WRT to target their response and serve as a context for communications.
 - a) The local water supply information should include:
 - MNR's, MOE's and Conservation Authorities' precipitation, streamflow and groundwater level data summaries if information is available,
 - General status of municipal wells, rural dug and drilled wells,
 - Anecdotal information on local effects.
 - b) The water demand information should include:
 - Summary listing of water takers based on MOE's Permit to Take Water database plus estimates of other takings < 50,000 litres per day.
 - General assessment of water taking sectors e.g. agriculture (irrigation areas, livestock demands), recreation (golf courses), industry (aggregates).
8. WRT identifies the actions needed to manage the response to drought or low water conditions and carries them out. The actions will maximize water supply, reduce demand, or do both. The recommendations offered here are the minimum. Teams should develop their own solutions to address local problems.

FIGURE 2: Organizational Links

OWDC Low Water Committee & Local WRT
Organizational Model and Linkages - Level II and Level III Conditions



Level I Response: Actions to Consider

- Goal:** Promote voluntary water conservation and management among all users to reduce further water shortages
- Target:** 10% voluntary reduction in water use among all sectors

| Action | Detail |
|----------------------|---|
| Communicate | <ul style="list-style-type: none"> - each WRT member is responsible for contributing to developing and communicating water conservation messages within their sector - Include media releases, farm papers, newsletters, newspapers, radio, etc. - messages focus on <ul style="list-style-type: none"> - watershed characterization information - statement of local conditions and near term prognosis - strong encouragement for voluntary water conservation with 10% reduction target |
| Water Use Reductions | <ul style="list-style-type: none"> - target 10% voluntary reduction |

| | |
|----------------------|---|
| Prepare for Level II | <ul style="list-style-type: none"> - develop a database of users based on Permit to Take Water database - prepare to inform the OWDC Low Water Committee Coordinator of potential Level II conditions |
|----------------------|---|

Recommendations for water conservation will be sector specific. Many examples are already in place and are to be used by the WRT where available. Residential examples include:

- installing toilet dams
- using rain barrels
- repairing leaky faucets
- encouraging minimal use of non-essential water (car washing, lawn watering)

Other examples are in *Green Tips*, published by the Ontario Ministry of the Environment.

For the agricultural sector, see OMAF fact sheets (1999) *How to Prepare for Irrigation During Water Shortages* and *Private Water Well Owners – Dealing with Water Shortages*.

Level II Response: Actions to Consider

- Goals:** Target further water conservation and management messages more directly
Publicize water use restrictions
Ensure compliance with restrictions
Consider priorities for water restrictions and other water use reductions at Level III
- Target:** Further 10% water use reduction (20% total)

| Action | Detail |
|--------|--------|
|--------|--------|

| | |
|---------------------------------|---|
| Communicate | <ul style="list-style-type: none"> - strongly encourage voluntary reductions by contacting key users identified from database developed during Level I Response - contact includes mailings, personal contact, advertising, provincial contact with permit holders and meetings - messages focus on <ul style="list-style-type: none"> - specific water conservation examples using fact sheets where available - further 10% reduction target - inform OWDC Low Water Committee Coordinator of confirmed Level II conditions - OWDC Low Water Committee Coordinator will initiate formation of an active Low Water Committee |
| Manage supply | <ul style="list-style-type: none"> - modify flood prevention, flow augmentation and power generation reservoir operations to minimize effects of drought - increase monitoring of compliance with effective water conservation practices |
| Water Use Reductions | <ul style="list-style-type: none"> - further 10% reduction - recommend that approvals of new water takings >50,000 litres per day be limited - discuss need for reduced water use by existing permit holders - enforce municipal water restrictions bylaws - monitor water takings for compliance with permits and bylaws |
| Prepare for Level III (Drought) | <ul style="list-style-type: none"> - document conservation efforts taken through Level I and Level II - record existing and potential social, environmental and economic impacts - develop recommendations on water use restriction priorities (refer to section 3.3) - notify OWDC Low Water Committee and local decision-makers of actions taken to prepare them for their involvement at Level III |

Level III Response (Drought): Actions to Consider

Goal: Develop and implement priorities on water management strategies and water use reductions

Target: Reduce and manage water use demands to the maximum extent

| Action | Detail |
|--------|--------|
|--------|--------|

| | |
|--|---|
| Involve senior decision-makers | <ul style="list-style-type: none"> - involve senior local and provincial decision-makers directly in refining and implementing water management proposals including potential reductions in water use - maintain regular contact with the OWDC Low Water Committee through provincial WRT representatives (WRT Chair may liaison with OWDC Low Water Committee Coordinator as required) |
| Develop and implement priorities on water management strategies and water use reductions | <ul style="list-style-type: none"> - continue to record and assess social, environmental and economic impacts of low water conditions - continue to record and assess water management strategies and water use reductions - confirm priorities for water use reductions among sectors through a consensus building process - Continue to implement and enforce water restrictions using existing tools such as local bylaws and provincial legislation (OWRA). - Record and assess social, environmental and economic impacts arising from water use restrictions |

Water use regulation and related water management strategies become the focus during the severe shortages experienced in a Level III condition. Actions move from largely voluntary compliance to regulatory control. Strong local involvement and provincial support will be necessary to assess options, confirm priorities and implement water use regulation and water management strategies. Heads of local municipal councils and Conservation Authorities as well as provincial field managers should now be directly involved in the process. Local team representatives of private groups are also encouraged to involve their senior provincial representatives. WRT should provide recommendations for water use reductions and potential restrictions to the OWDC Low Water Committee Coordinator. Existing legislation may be required to assist with implementing reductions in water use by large users (>50,000 litres per day). For example, the Ministry of the Environment has the authority to review and amend conditions on existing water-taking permits under the *Ontario Water Resources Act*. Local municipalities may pass bylaws restricting water usage

During all three levels of response, MNR and MOEE as well as Conservation Authorities and municipalities should continue monitoring activities and communicate results through their members on the WRT. This allows the WRT to anticipate and respond to changing conditions.

9. Communications

The WRT will maintain communication links with the province, Conservation Authorities, municipalities and special interest groups through its members. These communications are critical to generate awareness and support for local needs and WRT decisions.

The WRT has the primary responsibility for ensuring that effective communications are maintained with the local media and the citizens living and working within the watershed. The OWDC Low Water Committee will provide communications support for issues that have a broad provincial perspective.

10. Evaluation

WRTs will conduct annual self-evaluations during the drought and at the conclusion of the drought to assess equity, efficiency and effectiveness of communications, information, actions and monitoring.

5.2 Future Refinements

A comprehensive low water and drought management plan for Ontario requires a combination of long term preventive strategies and shorter-term response to depleted groundwater and surface water resources during extreme dry conditions. Ontario Low Water Response is designed to protect existing water supplies and modify the demand for water during those extreme dry conditions. Long term preventive strategies are also needed.

6. SUMMARY

| Level | Indicator | Information flow | Decision | Goal | Target | Communications | Supply management | Imposed restrictions |
|---|--|---|--|---|----------------------------|--|--|---|
| I – potential water supply problems | Precipitation: <80% long or mid-term average Streamflow: <70% lowest average summer month | From: EC, MNR, CAs, MOE To: MNR for analysis Then: WRT for confirmation | By province, in some cases by WRT chair Confirmed by WRT chair | Voluntary conservation | 10% reduction in water use | WRT members to own groups Media releases, newsletters, etc. Local conditions | | |
| II – minor problems, potential major supply problems | Precipitation: <60% long, mid-term or short-term average or more than 1 week no rain Streamflow: <50% lowest average summer month | as above | By province or WRT chair Confirmed by WRT Set up a Low Water Committee of the OWDC | Voluntary Conservation and restrictions | Additional 10% reduction | Direct contact with major users Sector-specific info on restrictions | Modify reservoir operations | Recommend Limiting new permits Implement bylaws Monitor and enforce compliance with existing permits |
| III – supply fails to meet usual demand, social and economic impact | Precipitation: <40% long, mid or short-term average Streamflow: <30% lowest average summer month | as above | Joint decision by WRT and OWDC | Conservation, restrictions and regulation | Maximum reduction | Sector and user specific info on restrictions, regulations | Modify reservoir, water power operations Consider hauling water | Reduce permit levels Set and institute water use priorities Enforcement |

Appendix 1: Existing Legislation

Summary of Water-related Legislation - Water Quality, Water Quantity, and Water-Related Land Management

SUMMARY OF MAJOR LEGISLATION ON WATER QUALITY

| Legislation by function | Administering agency | Description of legislation | Implementing agency |
|-------------------------------|----------------------|--|---------------------|
| <i>Provincial Legislation</i> | | | |
| *Ontario Water Resources Act | MOE | <ul style="list-style-type: none"> allows for the regulation of water supply allows surveillance and monitoring of all surface and ground water in Ontario regulates sewage disposal and controls water pollution allows MOE to construct and operate wastewater facilities or require it be done by an industry or municipality | MOE |
| *Environmental Protection Act | MOE | <ul style="list-style-type: none"> forbids discharge of any contaminant to the environment in amounts exceeding regulations prohibits discharge of any substance likely to impair the environment requires spills of pollutants be reported and cleaned up promptly and establishes a liability on the party at fault | MOE |
| Environmental Assessment Act | MOE | <ul style="list-style-type: none"> requires environmental assessment of any major public or designated private undertaking | MOE |

| Legislation by function | Administering agency | Description of legislation | Implementing agency |
|-----------------------------------|-----------------------------|--|----------------------------|
| Pesticides Act | MOE | <ul style="list-style-type: none"> controls use of chemicals for the destruction of plant and animal pest and investigates possible harmful effects of pesticides on the environment | MOE |
| Conservation Authorities Act | MNR | <ul style="list-style-type: none"> establishes Conservation Authorities with the mandate to operate dams for water quality enhancement, undertake water quality surveys and comment on planning documents | CAs |
| Lakes and Rivers Improvement Act | MNR | <ul style="list-style-type: none"> ensures proposed water works do not adversely affect water quality or cause undue erosion and silting | MNR |
| Planning Act | MMAH | <ul style="list-style-type: none"> guides municipal planning activities (e.g. requires local governments to assess the impact of a proposed subdivision on existing water supplies) | Municipalities, MMAH |
| Municipal Act | MMAH | <ul style="list-style-type: none"> grants municipalities the power to pass bylaws that prohibit the injuring or fouling of drains and sewer connections | Municipalities, MMAH |
| <i>Federal Legislation</i> | | | |
| *Fisheries Act | DFO | <ul style="list-style-type: none"> protects fish habitat by prohibiting habitat disturbance and deposition of deleterious substances in water frequented by fish | DFO, MNR |
| Environmental Contaminants Act | EC HWC | <ul style="list-style-type: none"> prevents dangerous contaminants from entering the environment | EC HWC |
| Canada Shipping Act | Transport Canada | <ul style="list-style-type: none"> controls pollution from ships by imposing penalties for dumping pollutants or failing to report a spill | Transport Canada |

| Legislation by function | Administering agency | Description of legislation | Implementing agency |
|---------------------------------------|-----------------------------|---|----------------------------|
| Canada Water Act | EC | <ul style="list-style-type: none"> authorizes agreements with provinces for designation of water quality management areas and other projects | EC |
| Canadian Environmental Protection Act | EC | <ul style="list-style-type: none"> controls manufacture, transportation, use, disposal of chemicals and wastes not adequately regulated by other legislation | EC |
| Pest Control Products Act | Agriculture Canada | <ul style="list-style-type: none"> regulates products used to control pests via registration according to prescribed standards | Agriculture Canada |

***Includes tools that can be used for drought management response within 24 hours.**

SUMMARY OF MAJOR LEGISLATION ON WATER QUANTITY

| Legislation by function | Administering agency | Description of legislation | Implementing agency |
|--------------------------------------|-----------------------------|--|----------------------------|
| <i>Provincial Legislation</i> | | | |
| Conservation Authorities Act | MNR | <ul style="list-style-type: none"> authorizes Conservation Authorities to prohibit or regulate fill, construction and watercourse alteration allows for construction and maintenance of flood and erosion control structures | CAs |
| Lakes and River Improvement Act | MNR | <ul style="list-style-type: none"> empowers MNR to regulate the construction and operation of water works requires that new water works be approved | MNR |

| Legislation by function | Administering agency | Description of legislation | Implementing agency |
|--------------------------------|-----------------------------|--|----------------------------|
| Public Lands Act | MNR | <ul style="list-style-type: none"> • authorizes MNR to construct and operate dams and acquire land for their purposes • authorizes power generation projects on Crown land | MNR |
| Municipal Act | MMAH | <ul style="list-style-type: none"> • allows municipalities to enact bylaws for the construction, repair and maintenance of drains • prohibits the injury or fouling of drains in rivers • empowers municipalities to pass bylaws governing the construction and maintenance of dams and the straightening of water courses for flood protection | municipalities, MMAH |
| Public Utilities Act | MMAH | <ul style="list-style-type: none"> • empowers municipalities to acquire and operate water works and divert a lake or river for their purposes | municipalities, MMAH |

| Legislation by function | Administering agency | Description of legislation | Implementing agency |
|--------------------------------------|------------------------------------|---|------------------------------------|
| Ontario Water Resources Act | MOE | <ul style="list-style-type: none"> • requires the issuance of a permit for the taking of more than a total of 50, 000 litres of water in a day from a ground or surface source of supply • Allows the MOE Director to refuse to issue, cancel, impose terms and conditions in issuing a permit or alter the terms and conditions of a permit after it is issued. • requires the issuance of a permit for the construction of a well • allows municipalities to establish or replace water works with ministerial approval | MOE |
| <i>Federal Legislation</i> | | | |
| Fisheries Act | DFO | <ul style="list-style-type: none"> • protects fish habitat by prohibiting habitat disturbance • ensures construction of a fishway around any obstruction in a waterway | DFO, MNR |
| Navigable Waters Protection Act | Department of Fisheries and Oceans | <ul style="list-style-type: none"> • prohibits dumping of wastes that may interfere with navigation • prohibits construction in navigable waters | Department of Fisheries and Oceans |
| Canada Water Act | EC | <ul style="list-style-type: none"> • authorizes agreements with provinces for the delineation of flood plains and hazardous shorelines for flood and erosion control | EC |
| International Rivers Improvement Act | External Affairs EC | <ul style="list-style-type: none"> • prohibits damming or changing the flow of a river flowing out of Canada | EC |

SUMMARY OF WATER-RELATED LAND MANAGEMENT LEGISLATION

| Legislation by function | Administering agency | Description of Legislation | Implementing agency |
|---|----------------------|--|----------------------|
| <i>Provincial Legislation</i> | | | |
| Drainage Act | OMAF | <ul style="list-style-type: none"> • facilitates construction, operation and maintenance of rural drainage works • provides legal mechanism where riparian landowners can drain their lands and divide the costs among themselves | OMAF, municipalities |
| Tile Drainage Act | OMAF | <ul style="list-style-type: none"> • provides for low interest loans to farmers from municipalities for tile draining their property | municipalities, MMAH |
| Planning Act | MMAH | <ul style="list-style-type: none"> • provides for and governs land use planning • deals with provincial administration in land use planning and local planning • provides for development of statements of provincial interest to be regarded in the planning process | municipalities, MMAH |
| Public Lands Act | MNR | <ul style="list-style-type: none"> • authorizes MNR to manage and control activities on Crown land | MNR |
| Mining Act | MNDM | <ul style="list-style-type: none"> • registers mining lands and lands forfeited to the Crown • exempts lands and mining rights from taxes | MNDM, MNR |
| Beds of Navigable Waters Protection Act | MNR | <ul style="list-style-type: none"> • declares the beds of navigable waters as the Crown's responsibility | MNR |
| Public Transportation and Highway Improvement Act | MTO | <ul style="list-style-type: none"> • requires a permit for any work carried out within the right-of-way of a provincial highway | MTO |
| Conservation Authorities Act | MNR | <ul style="list-style-type: none"> • empowers Conservation Authorities to manage, regulate or acquire floodplains, hazardous shorelines and conservation lands | |

| | | | |
|-----------------------------------|-----|---|----------|
| Environmental Assessment Act | MOE | <ul style="list-style-type: none"> requires environmental assessment of any major public or designated private undertaking | MOE |
| <i>Federal Legislation</i> | | | |
| Fisheries Act | DFO | <ul style="list-style-type: none"> controls erosion and sedimentation for the purpose of fish habitat preservation | DFO, MNR |

EMERGENCY RELATED LEGISLATION

| Legislation by function | Administering agency | Description of Legislation | Implementing agency |
|--------------------------------|-----------------------------|--|----------------------------|
| Emergency Plans Act | EMO | <ul style="list-style-type: none"> may take action and make such orders as he or she considers necessary to implement the emergency plans to protect property and health, safety and welfare of inhabitants of the emergency area | MNR, Municipalities |

MNR - Ministry of Natural Resources
 MOE - Ministry of the Environment
 DFO - Department of Fisheries and Oceans Canada
 MTO - Ministry of Transportation of Ontario
 MNDM - Ministry of Northern Development and Mines
 OMAF - Ministry of Agriculture and Food
 EMO – Emergency Measures Ontario
 EC – Environment Canada
 HWC – Health and Welfare Canada

Appendix 2: Additional Technical Information

Distinguishing Between the Levels of Response

Thresholds for Level I must be sensitive enough to give enough time for action but not so sensitive as to activate when problems are not likely to occur. Some areas may reach the threshold for Level I several years in a row. Indicators will be monitored and reviewed periodically to determine if the thresholds are set at the correct levels.

Indicators

Research was done in 1999 to find out how precipitation and streamflow data might be used to quantify low water and drought conditions. Based on this experience, the project team has used precipitation and streamflow as the two primary indicators.

Precipitation Indicator 1

For each station, MNR will compare the monthly precipitation with the average monthly precipitation for that station. For each month, the comparison will be made by using the total precipitation in the month divided by the average precipitation for that month. These calculations will then be averaged over the previous 18 months (long term) and the previous 3 months (seasonal).

When an area reaches a Level I, or higher condition level, the comparison for the previous month for each station will also be used as an indicator. As well, on the 7th, 14th, and 21st of each month, a weekly comparison will be made of the accumulated 1, 2 and 3-week precipitation to the average precipitation for the current month.

Precipitation Indicator 2

In a Level I condition or greater, the number of consecutive readings of less than 7.6mm (no rain) will be determined at each reading (on the 7th, 14th, 21st and at the end of the month).

In sensitive watersheds (very high water demand or very sandy soils), all readings of less than 7.6mm will be noted. In a less sensitive watershed, (moderate water demand and sandy soils or high demand and silty soils), two or more consecutive readings of less than 7.6mm will be noted. These one or two readings of less than 7.6mm will be used as thresholds.

Streamflow

Surface flow indicators demonstrate if there is enough streamflow in the river to meet the basic needs of the ecosystem and if there is additional water available for needs such as navigation, recreation, hydropower generation, irrigation, and other takings.

Baseflow response contributes to surface flow and indicates the state of the groundwater supply. After a rainfall or snowmelt, there may be an immediate surface runoff response in streamflow followed, sometimes after a delay, by a baseflow response from groundwater. In many cases, baseflow is relied upon to provide the needs of the ecosystem and to maintain the surface water quality at an acceptable level. Baseflow response will indicate if there is enough water to meet basic ecosystem needs. If baseflow is insufficient, water management authorities will have to manage the structures to provide water for surface water takings, where possible.

In the spring, surface flows are much higher than at other times of the year. It is necessary to take this into account when determining streamflow indicators. As a result, thresholds were selected to reflect seasonal variability. It is also necessary to recognize that wide, flat streams and headwater streams (streams at the top of the watershed) are more sensitive to low flows. Representative streamgauge stations need to be selected to take account of varying stream channel conditions.

Streamflow Indicator

Water level gauges provide data that is used for surface flow, or streamflow, indicators. An indication of streamflow approaching the minimum needed to maintain the ecosystem is the statistical flow value, 7Q20. (The minimum 7-day, 1-in-20-year flow that is calculated for individual gauges.)

The historical average monthly flow for each month for each station is available from the Environment Canada streamflow historical archive HYDAT. For each station, the lowest average summer month flow will be the lowest average monthly flow for July, August or September. Comparing the value of the current flow with the historic low value will determine when the streamflow is approaching the 7Q20. All flow indicators will be expressed as a per cent of the lowest average summer month flow. On the 14th of each month, when a Level I or greater condition has been attained, there will also be a calculation of the flow for the first half of the month that will be compared to the lowest average flow.

Spring Indicator

For the analysis at the provincial level, the criteria will be the same for all streamflow gauges. In April, May, and June, flows are expected to be higher, therefore, the indicator flows will be expected to be higher. This will be factored into the streamflow thresholds. While a low flow in the springtime may not indicate existing water supply problems, it indicates that potential low water conditions may develop in the summer.

Local Streamflow Indicator

Streams in the headwaters or those having high width-to-depth ratio are expected to be more sensitive to low flows. An indication of streamflow approaching the minimum needed to

maintain the ecosystem in these streams is the statistical flow value, 7Q2. (The minimum 7-day 1-in-2-year flow, which is also calculated for individual gauges.). At the local level, where this detail is known, the indicator flows can be higher than for the main channel streams or streams that are narrow and deep. The local WRT can factor this into the streamflow thresholds.

Precipitation Thresholds

Level I Condition

A watershed enters Level I when its 3-month or 18-month precipitation drops below 80% of the average 3-month or 18-month precipitation for those months.

The watershed leaves Level I when indicators that resulted in the watershed entering Level I have risen above the Level I threshold such that a 10% voluntary reduction in use is no longer required and it is anticipated that the watershed will not return to Level I condition over the next few weeks.

Level II Condition

The threshold for Level II condition is 60% of the 1-month, 3-month or 18-month average precipitation. A watershed enters Level II when its 1-month, 3-month or 18-month total precipitation drops below 60% of the average 1-month, 3-month or 18-month precipitation for those months and it is already in a Level I condition.

OR

The threshold for Level II condition may also be more 2 or more consecutive weeks of less than 7.6mm precipitation (no rain). A watershed enters Level II when there is an existing Level I condition and a reading of cumulative precipitation less than 7.6mm in high-demand areas, or 2 or 3 readings in succession when the cumulative precipitation is less than 7.6mm in moderate-demand areas. At the local level, when precipitation is monitored daily, a watershed enters Level II if it has 7 to 14 days of less than 7.6mm in a sensitive area or 14 to 21 days of less than 7.6 mm in a less sensitive area.

The weekly update to the monthly per cent of average (calculated on the 7th, 14th, and 21st) indicates improving or degrading conditions but is not used to determine a Level II condition. This measurement is only taken during an existing Level I or Level II condition.

The watershed reenters Level I when indicators that resulted in the watershed entering Level II have risen above the Level II thresholds-such that the additional 10% voluntary reduction in use is no longer required.

Level III Condition

The threshold for the Level III condition is 40% of the 1-month, 3-month or 18-month average precipitation. A watershed enters Level III when the 1-month, 3-month or 18 month total precipitation drops below 40% of the average 1-month, 3-month or 18-month precipitation for those months and there is an existing Level II condition.

The weekly update to the monthly per cent of average (calculated on the 7th, 14th, and 21st) indicates improving or degrading conditions but is not used to determine a Level III condition. This measurement is only taken during an existing Level I or Level II condition.

The watershed reenters Level II when indicators that resulted in the watershed entering Level III have risen above the Level III threshold such that water use restrictions are no longer required and are not anticipated to be required over the next several weeks.

Streamflow Thresholds

Level 1 Condition

A watershed enters Level I when its 1-month flow drops below 100% of the lowest average summer month flow in the spring or if the flow drops below 70% of the lowest average summer month flow during other times.

Level II Condition

A watershed enters Level II when its 1-month flow drops below 70% of the lowest average summer month flow in the spring or if the flow drops below 50% of the lowest average summer month flow during other times.

Level III Condition

A watershed enters Level III when its 1-month flow drops below 50% of the lowest average summer month flow in the spring or if the flow drops below 30% of the lowest average summer month flow during other times.

For Level II and Level III conditions, streamgauges known to represent more sensitive streams (streams in headwaters or wide and shallow streams) may have the comparison levels raised by 10%. For example, more sensitive streams may enter a Level II in the spring when the flow drops below 80% instead of 70% of the lowest average summer month flow. The WRT should address this level of detail at the local level. A watershed can enter a Level II only from an existing confirmed Level I or Level III condition and a watershed can only enter a Level III from an existing confirmed Level II condition.

Groundwater Baseflow Protection

At present, baseflow indicators have not been identified. In the future, baseflow will be measured and comparisons made with observed conditions. At present, it is believed that a Level I threshold would occur when baseflow approaches demands minimum for natural function. Level II and Level III thresholds would be set a number of days ahead of the dates the thresholds are reached to deal with wells that cause induced recharge. There is a need to identify wells that significantly influence baseflow (do wells influence baseflow or aquifer levels?).

Groundwater Aquifer levels

To date, aquifer level indicators have not been identified. Well log data can be used to estimate representative groundwater elevations. A network for measuring the water table is currently being developed. Threshold water table levels will be subsequently developed and matched against demand. Water table levels near demand level would generate a Level I condition. Exceeding the demand level would generate a Level II condition. A Level III condition would occur when water levels drop below the level needed for high-priority demand. Critical water table heights for baseflow protection need to be determined.

Monitoring and Reporting

Data Acquisition

- precipitation and streamflow data is obtained through the MNR Water Resources Information System (WRIS) computer located in Toronto and maintained through the MNR Sault Ste. Marie office
- Climate data is obtained from Environment Canada through satellite connection and decoded by WRIS. This data is obtained through a cost sharing agreement between Environment Canada and MNR (including the Conservation Authorities) and MOEE
- streamflow data and precipitation data located at streamflow sites is collected by telephone modem and decoded by WRIS
- historic streamflow and climate records are used to determine monthly average historical values for each station

Addressing Gaps

- MNR will continue to work with partners to improve the monitoring network to cover a greater geographic area and to measure conditions for a greater variety of areas that are sensitive to drought (i.e. sensitive soils, differing stream types, high demand areas)
- Groundwater indicators will be developed and applied to the Provincial Groundwater Monitoring Network data that MOE will provide to MNR Peterborough. This information will be included in the analysis and conditions reports.

- MNR will continue to investigate the application of snowpack and snowmelt information to improve on the inadequacies of snowfall information.
- A means of determining how much water is available for melting from the snowpack and whether it is replenishing the supply or evaporating is needed
- SSM/I (Special Sensor Microwave Imagery) data from satellite imagery will be used to determine the snow water content of the snowpack across Ontario
- Snowpack and the depth of snow on the ground will be measured and the snow pack density determined. This data will be used to augment and interpolate between the snow survey data collected by the flood program.

DRAFT

Assessment Process and Communicating

- Summary precipitation data and data from streamgauges is obtained manually from WRIS over intranet
- Additional precipitation and streamgauge information unavailable through WRIS is obtained by e-mail (e.g. from Conservation Authorities with gauges off line, from monitoring network of volunteers)
- Additional sources of precipitation and streamflow monitoring networks will be sought out
- Data collected by MNR Peterborough, in text flat files and text email messages are entered into spreadsheets and generate streamflow indicator plots
- Peterborough Geomatics Centre will continue to obtain fire weather data, run routines to incorporate data into databases containing monthly precipitation averages and the lowest average summer flows where the percent of the average is calculated and generate precipitation plots and present these to MNR Peterborough for review.
- MNR Peterborough will continue to verify data and information, determine corrected data where necessary and provide this information to Peterborough Geomatics Centre
- Peterborough Geomatics Centre will produce contour maps using indicator thresholds as breakpoints on base mapping showing the watershed boundaries and provide these to MNR Peterborough in Adobe format for review.
- MNR Peterborough will continue to verify data and information, determine corrected data where necessary and provide this information to Peterborough Geomatics Centre to update products

Appendix 3: Project Development Team (1999)

Ron Running - Ministry of Natural Resources

Ian Cameron - Ministry of Natural Resources

Maxine Kingston - Ontario Ministry of Agriculture and Food

Jim Myslik - Ontario Ministry of Agriculture and Food

Jim Richardson - Ministry of the Environment

Fred Fleischer - Ministry of the Environment

Ian Wilcox - Conservation Ontario

Gary Cousins - Association of Municipalities of Ontario

Support provided by:

- Margaret Mack, Ministry of Natural Resources
- Pam Jeff, Ministry of Natural Resources
- Pat Inett, Ontario Ministry of Agriculture and Food
- Jim Clifford, Ministry of the Environment
- Jena Leavoy, Ministry of Natural Resources
- Rhonda Bateman, Ministry of Natural Resources
- Jennifer Jacobson, Ministry of Natural Resources