

A scenic view of a lake with a forested shoreline. In the foreground, there are several tulips in shades of pink, white, and yellow. The text is overlaid on a dark grey horizontal band across the middle of the image.

SOUTH NATION CONSERVATION MUNICIPAL WORKPLAN NORTH STORMONT



SOUTH NATION
CONSERVATION
DE LA NATION SUD



SOUTH NATION
CONSERVATION
DE LA NATION SUD

MESSAGE FROM THE CHAIR:

Dear North Stormont,

Conservation Authorities are community-based environmental organizations dedicated to conserving, restoring, developing, and managing natural resources on a watershed scale.

South Nation Conservation (SNC) exists because of local initiatives and we recognize the importance of our continued partnership with our 16 member municipalities. In 2020, we look forward to building on these relationships and continuing to deliver key programs and services on your behalf.

Please review this summary document prepared for your Municipality by SNC staff.

Bill Smirle,
Chair, South Nation Conservation



OUR VISION

Improved Water Quality for a Healthy Ecosystem: Our vision encompasses water levels which satisfy the needs of humans and the environment, healthy rivers and natural shorelines, and safe wastewater management practices.

OUR MISSION

To ensure that the management of natural occurrences, natural resources, and human activities results in the protection or improvement of water resources.

OUR EXPERTISE

Conservation is our core competency. SNC offers knowledge and experience to help our partners contribute to a healthy region.



SOUTH NATION CONSERVATION ADMINISTRATION BUILDING, FINCH

FOSTERING LANDOWNER STEWARDSHIP



WHAT WE DO:

- Plant approximately 140,000 trees per year and provide subsidies on tree purchases for landowners. SNC has planted 3.3 million trees since 1990.
- Offer free site visits and resources to woodlot owners, and offer \$500 grants to help develop forest management plans.
- Provide over \$75,000 annually in funding to landowners for projects that protect water quality through the Clean Water Program.
- Own approximately 12,000 acres of land acquired through donation or purchase, following SNC's Land Securement Strategy.
- Manage over 20,000 acres of Community Forest in Eastern Ontario; 9,467 in the United Counties of Stormont, Dundas and Glengarry (SDG).

TO-DATE, IN NORTH STORMONT:

- Planted 354,400 trees since 1990.
- Offered 16 woodlot owners our Woodlot Advisory Services since 2011, visiting 458 acres of land.
- Distributed nearly \$4,000 in forest management grants since 2014, helping protect approximately 1,177 acres of forest under private ownership.
- Provided over \$443,826 in funding to local landowners for projects that protect water quality since 1998.
- Planted 1,392 trees at 10 sites in SDG as part of the SDG Roadside Tree Project.

2020 PRIORITIES:

- SNC continues to work with its partners through its Forest Conservation Initiative, to implement recommendations from our 2018 Report on "Protecting and Increasing Forest Cover in the South Nation Conservation Jurisdiction.
- Through the Forest Conservation Initiative, SNC will be hosting community free tree activities and has implemented new tree planting subsidies to help plant more trees along fields and watercourses.
- SNC will continue to plant trees, manage community lands, offer resources, work with partners, and help fund important water quality improvement projects.



3 MILLIONTH TREE
PLANTED SINCE 1990!



SNC HAS PLANTED OVER 3 MILLION TREES SINCE 1990

PROTECTING PEOPLE AND PROPERTY AND SUPPORTING SUSTAINABLE DEVELOPMENT



WHAT WE DO:

- Map floodplains and other natural hazards, review construction and approve projects in and around watercourses, floodplains and wetlands.
- Conduct septic system inspections and permits for 13 municipalities.
- Work to protect drinking water through the Source Water Protection program.
- Flood Forecasting and Warning provides advance notice of flood conditions and updates on watershed conditions during flood events for the South Nation, Ottawa and St. Lawrence Rivers.
- Low Water Response provides declaration of drought conditions and offers guidance for reducing water consumption based on condition severity.
- Operate and maintain 7 water control structures.

TO-DATE, IN NORTH STORMONT:

- SNC maintains the Chrysler Dam and the Chrysler Dyke, important water control structures.
- 2.95 km² of flood hazard maps are regulated.
- 23.7 km of unstable slope has been mapped.
- 66 properties assessed for Risk Management Plans through the Source Water Protection program.

LAST YEAR, IN NORTH STORMONT:

- 31 septic approvals issued.
- 19 Planning Act application reviews.
- 105 permits processed.
- 2 low water advisory memos issued.
- 43 watershed conditions and flood statements issued.
- Installed a permeable parking lot and a regional Low Impact Development demonstration site in Finch.
- Developed planning tools and monitoring guidelines for stormwater facility management.
- The Emergency Management Toolkit improved SNC's Flood Forecasting and Warning Program, enhancing SNC's ability to predict floods and provide municipalities with the ability to prepare and respond quickly and efficiently to save lives, prevent or limit property damage, and relieve local financial burdens.

2020 PRIORITIES:

- Provide engineering services to member municipalities as needed.
- Continued maintenance and operation of erosion and water control structures.
- Continue working in the Emergency Management Toolkit consisting of an automated alert system, which provides advanced notice of watershed conditions.



THE CRYSLER DAM

PROVIDING NATURAL SPACES AND RECREATIONAL OPPORTUNITIES



WHAT WE DO:

- Own and manage over 12,000 acres of public, natural spaces.
- Operate 15 day-use parks and trails, including 9 public river access points.
- Protect environmentally significant properties and accept land donations.
- Protect over 7,000 km of fish habitat which support 72 fish species, offering endless recreational fishing opportunities.

RECREATIONAL PARKS AND TRAILS IN NORTH STORMONT:

In North Stormont, SNC owns and manages 2,102 acres of community land, and maintains 3 Conservation Areas and several canoe routes, encouraging residents to enjoy local nature:

- **McIntosh Park:** This 4-acre community park located in Berwick is a central gathering place where trees can be planted to recognize and commemorate loved ones, while also beautifying the natural landscape. A great location for family picnics under the gazebo, with over 1,650 visitors in 2019.
- **Warwick Forest:** This area includes SNC and SDG Forests and features 6 km of trails to explore with a new enhanced interpretive trail system. In 2019, over 1,440 visitors visited the Forest.
- **Reveler:** A favorite area for bird watchers and hikers alike; over 420 visitors in 2019 walked the trails around this 99-acre Conservation Area, rich with restored grasslands, hardwood forests, limestone outcropping, rare tree species, and endangered wildlife.
- **Moose Creek Recreational Trail:** This trail was constructed with support from Lafèche Environmental, which fulfilled the wish of Viola McRae, the landowner of the walking trail. SNC is a trail partner, completes annual assessments and has completed trail upgrades when funding is available.

LAST YEAR, IN THE SNC JURISDICTION:

In 2019, SNC's network of 15 Conservation Areas welcomed over 92,800 visitors to hike, geocache, picnic, kayak, canoe, launch their boat, bird watch, fish, and enjoy their local environment.

- SNC installed 100 new signs across its Community Lands to identify ownership and promote sustainable, proper management of forests.
- SNC completed an emergency preparedness inventory to assign civic numbers at all Conservation Areas.

2020 PRIORITIES:

- SNC will continue to work with partner municipalities to increase visitor safety and enhance emergency preparedness at Conservation Areas.
- SNC is committed to regular maintenance and upkeep of parks and trails to ensure accessible recreation for residents. This includes grooming year-round to ensure safe trails during every season.



WARWICK FOREST IN BERWICK

MAKING SCIENCE BASED DECISIONS



WHAT WE DO:

- Collect water quality and quantity, stream health, fisheries and forestry data to support stewardship programs and guide sustainable development.
- Invasive species management and species at risk habitat assessments.
- Produce Subwatershed Report Cards and other reports on environmental health.
- Monitor weather and water data at groundwater and surface water monitoring stations.

TO-DATE, IN NORTH STORMONT:

- 34 sites monitored through the Ontario Stream Assessment Protocol (OSAP).
 - Over 1.8 km of stream has been evaluated for channel morphology, bank stability, stream flow, water quality, and invertebrate and fish community composition. Data guides habitat restoration priorities.
- 4 shoreline restoration projects.
- 2 groundwater monitoring stations located in Berwick and Warina.
- 1 surface water quality monitoring station on the Payne River, outfitted with a rain gauge.
- 1 weather monitoring station located at the SNC head office in Finch.
- In 2018, SNC released its South Nation Watershed Report Card: State of the Nation. This document provides watershed health information on natural resources and habitat features within the region.
- SNC has developed a new hydrological model for the South Nation Watershed which enhances Flood Forecasting and Warning and Low Water Response Programs. Recent updates to the model have improved its simulations of future hydrological conditions using soil moisture and groundwater data.
- 2 municipal drains assessed to provide a classification based on flow and fisheries data.
- SNC continues to monitor invasive species on our lands and has carried out targeted control projects for Phragmites, European and Glossy Buckthorn, and Dog-Strangling Vine.

2020 PRIORITIES:

- Subwatershed Report Cards are produced annually in different regions following a year of monitoring, reporting on surface and groundwater quality along with forest and wetland cover. The recently published report on the Upper South Nation Subwatershed highlights conditions in southern municipalities; SNC will be working on the Castor River Subwatershed Report Card in 2020. Reporting is based on a 5-year rotation of monitoring programs.
- Work with municipal partners to evaluate the sustainability of municipal the water supplies.



FIELD MONITORING

EMPOWERING COMMUNITIES AND YOUTH



WHAT WE DO:

- Deliver curriculum-based education programs to over 2,000 local youth every year; including Youth Fish Camps, Youth Hunt Apprenticeships, the Stream of Dreams Community Art and Environmental Education Program, and the Maple Syrup Education Program.
- Regularly attend community events and fairs to network with residents and highlight SNC's programs and services.
- Offer over \$10,000 in Community Environmental Grants to non-profit community groups.
- Partner with school boards to deliver environmental high school program certifications.

LAST YEAR, IN THE SNC JURISDICTION:

- SNC worked closely with partner agencies to sponsor or cohost river races along the South Nation River, Ottawa River and St. Lawrence River.
- SNC hosted high school students at various project sites for Specialist High Skills Major certifications towards their high school diplomas.
- SNC delivered the Stream of Dreams program to over 1,000 local students.
- Thanks to support from Federal and Provincial funding agencies, SNC hires several local summer students every year from across its 4,384 square-kilometer jurisdiction in Eastern Ontario.
- SNC hosted dozens of local youth at its annual Fish Camps and Hunt Apprenticeship Programs.
- SNC worked with its local partners to help organize and host community events across the jurisdiction.
- SNC relaunched its Maple Syrup Education Program for the 18th season at the Oschmann Forest in North Dundas. The not-for-profit education program hosted over 500 local students in 2019, providing them with a hands-on environmental learning experience at a local sugar shack.
 - Students learn about the process of maple syrup production as it has evolved from First Nations traditions through to modern day production techniques. The program supplements the Ontario science curriculum and includes key teachable moments in areas of natural heritage, forest management, and ecosystem habitats.

2020 PRIORITIES:

- SNC will work with municipalities and partner agencies to adapt and create new ways to connect with local communities and youth during Covid-19 such as online campaigns, 'Nature at Home' live educational facebook series and digital media learning opportunities.
- SNC will continue to work with its regional partners and member-municipalities to deliver meaningful environmental education and host community events across the jurisdiction.
- SNC will work with partners to create a new strategic vision and plan to position the Authority beyond the year 2020.



SNC DELIVERS THE STREAM OF DREAMS PROGRAM TO OVER 1,000 STUDENTS ANNUALLY

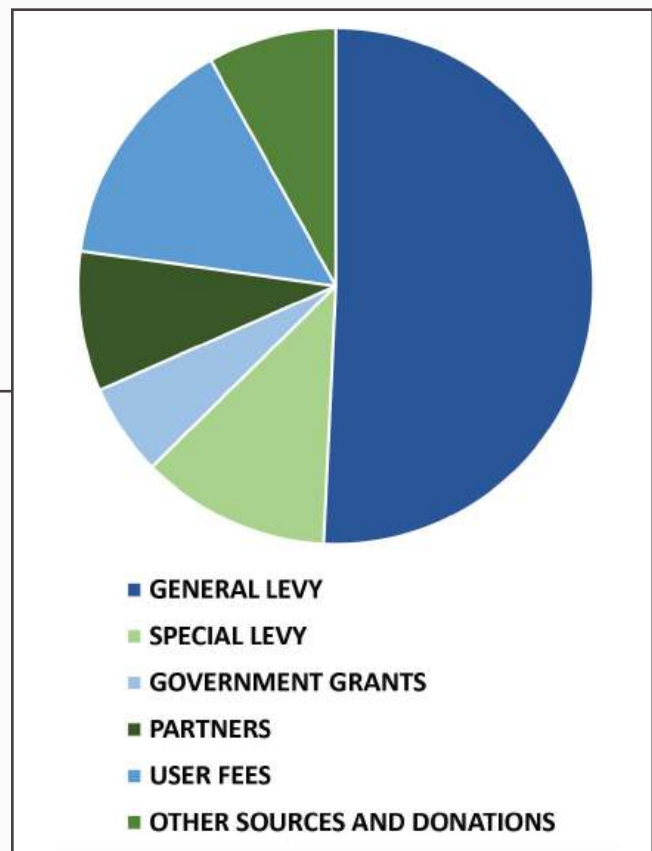
YOUR PARTNER IN CONSERVATION

South Nation Conservation (SNC) contributes to the local environment thanks to the funding support of SNC's 16 member municipalities and self-generated revenue from donations, partnerships, and government grants.

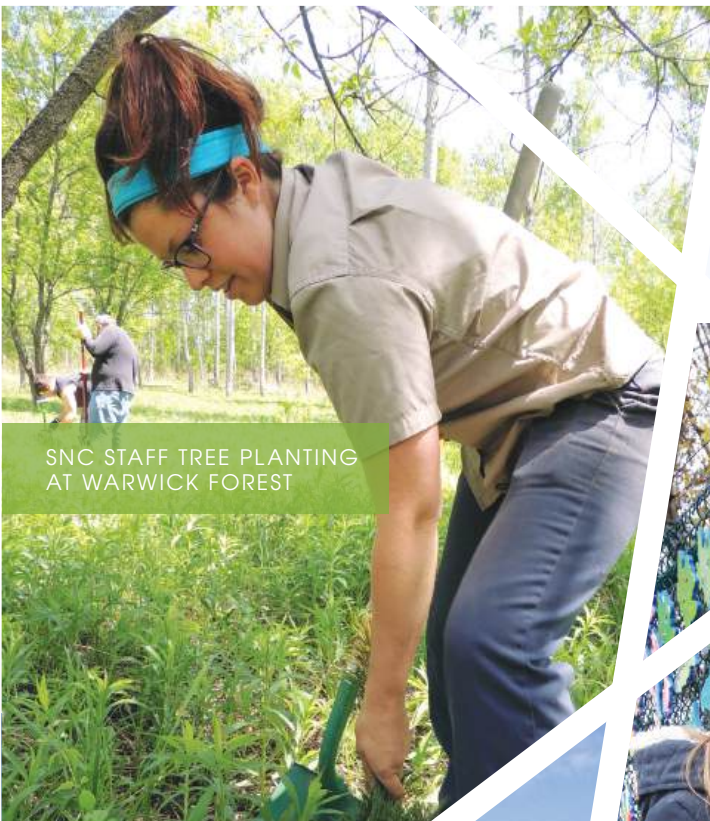
2020 SNC BUDGET SUMMARY

Budget: \$6,855,520

- General Levy: \$3,478,942
- Special Levy: \$815,394
- Government Grants: \$395,294
- Partners: \$600,968
- User Fees: \$1,012,670
- Other Sources and Donations: \$552,252



For every \$100,000 in household assessment, your municipality contributes \$5.58 on average to South Nation Conservation. These contributions allow SNC to provide programs and services that promote watershed management, sustainability, and the protection of people and property.



SNC STAFF TREE PLANTING AT WARWICK FOREST



HOOP NETTING FISH SURVEYS ON THE SOUTH NATION RIVER



SNC'S FIRST STREAM OF DREAMS IN ROCKLAND



STAFF SURVEY WILD RICE ALONG THE SOUTH NATION RIVER



BEE-KEEPING ON SNC COMMUNITY LANDS AT AMBROSIA APIARIES IN BERWICK

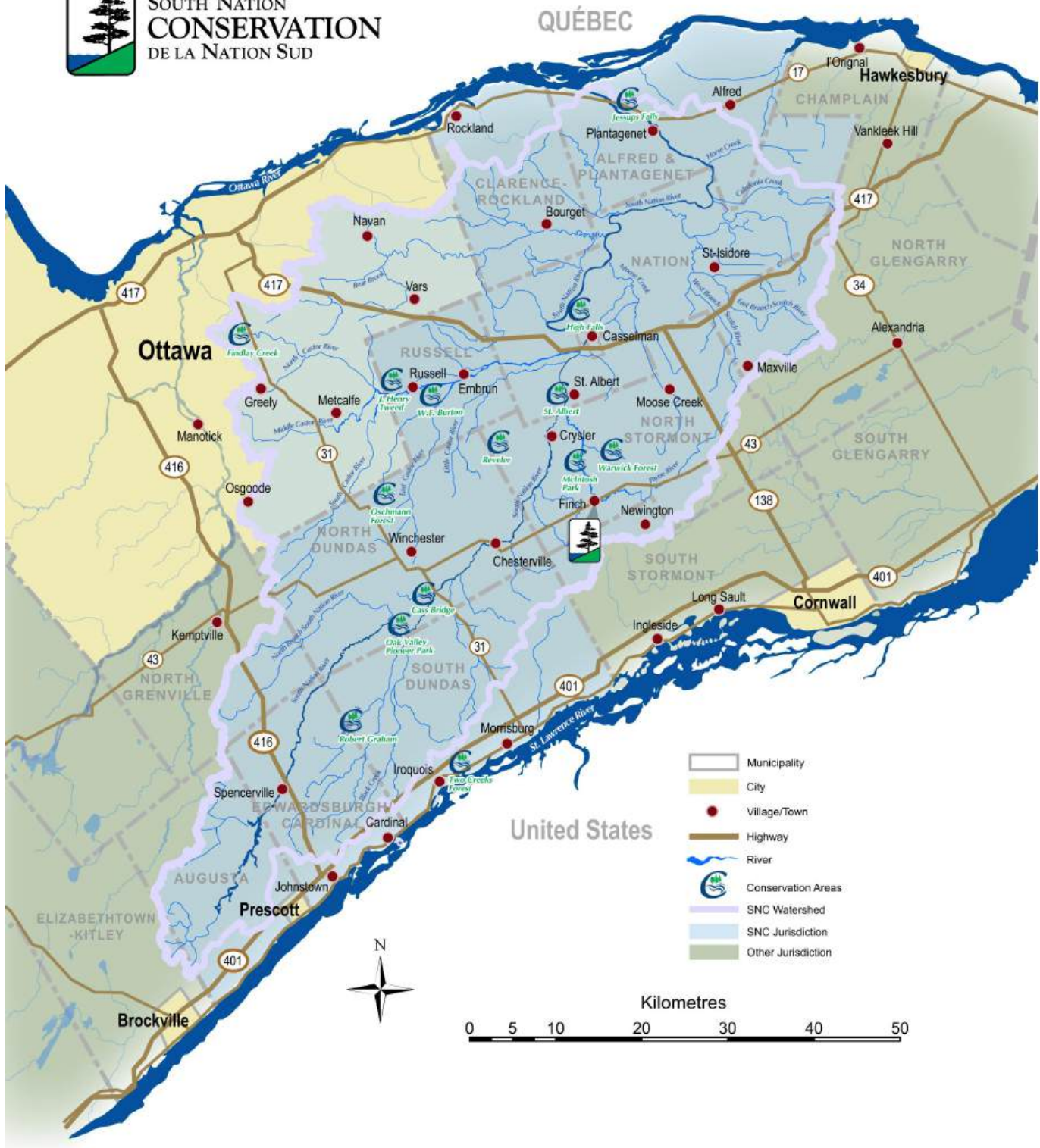


SNC RAIN GAUGE FOR COLLECTION OF PRECIPITATION DATA

OUR LOCAL ENVIRONMENT; WE'RE IN IT TOGETHER.



**SOUTH NATION
CONSERVATION**
DE LA NATION SUD



South Nation Conservation
38 Victoria Street
Finch, ON K0C 1K0

T: 1.877.984.2948
info@nation.on.ca
nation.on.ca

