



SOUTH NATION  
CONSERVATION  
DE LA NATION SUD

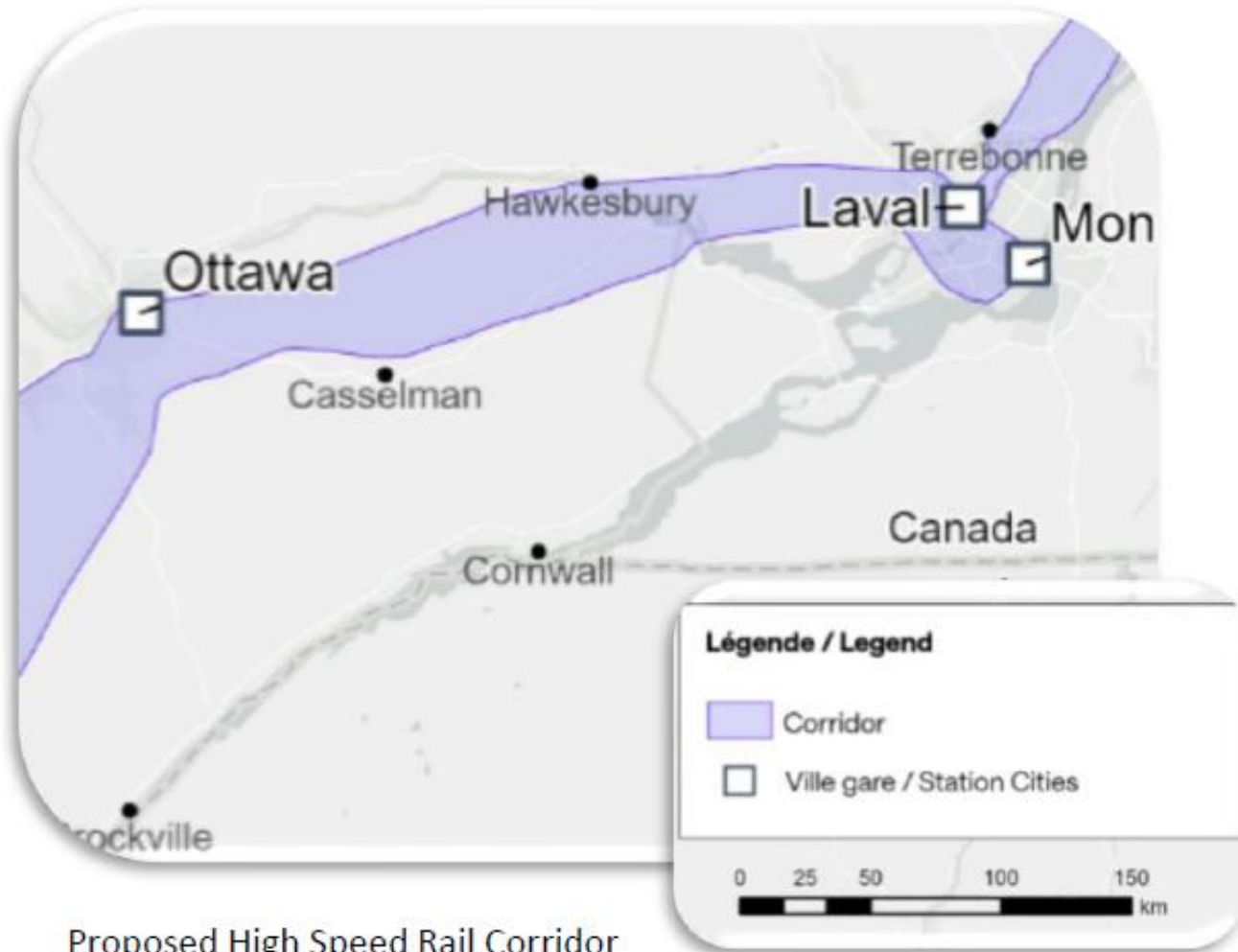
# Project Update

April 9<sup>th</sup>, 2026





# ALTO High-Speed Rail



Proposed High Speed Rail Corridor  
<https://en.consultation.altotrain.ca/>



# Watershed Advisory Committee Meeting



- First meeting of 2026 was held on March 24<sup>th</sup>
- Next meeting is June 23<sup>rd</sup>



# Emergency First Aid Training

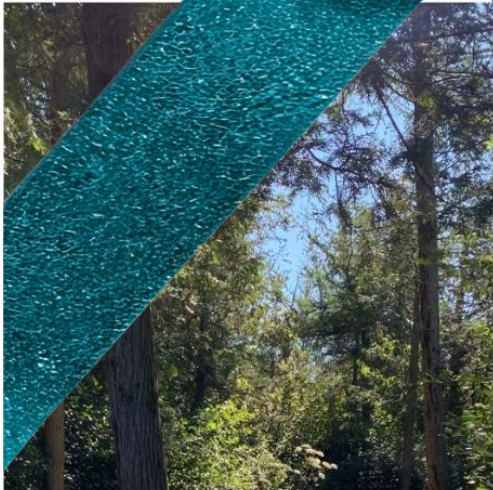
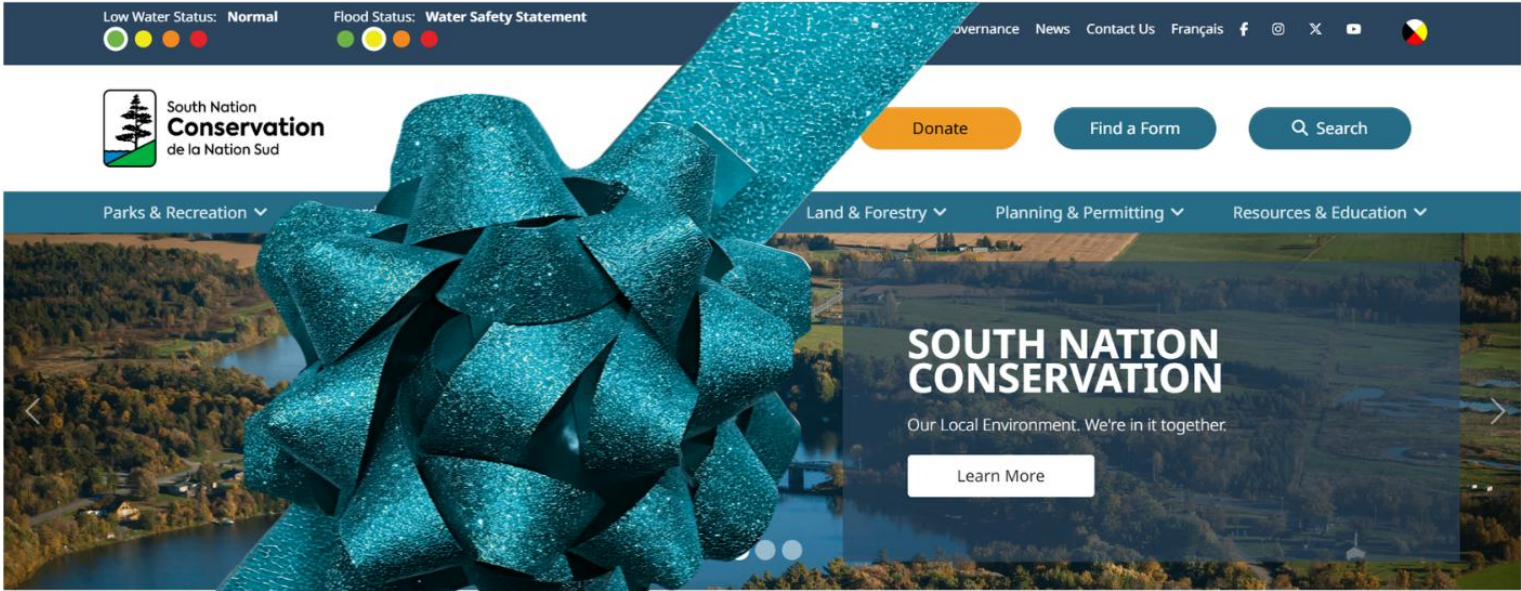


- 15 staff re-certified on April 7<sup>th</sup>, 2026





# New Website is Live!





# Maple Education



Ecole Ste Therese D'Avila, March 31<sup>st</sup>, 2026, at  
Oschmann Forest Conservation Area

- Two schools participated:
  - Avonmore Elementary School
  - Ecole Ste-Therese D'Avila
- Total 108 students plus teachers/parents



# Free Tree Pick Ups



South Nation  
**Conservation**  
de la Nation Sud

## 2026 Free Tree Pick-Ups

Brought to you by your local Conservation Authorities and partner municipalities.

- Annual Free Giveaways in each partner Municipality
- April 26<sup>th</sup> – May 10<sup>th</sup>
- Over 8,000 trees will be provided to watershed residents



# Leitrim Wetland Donation Event

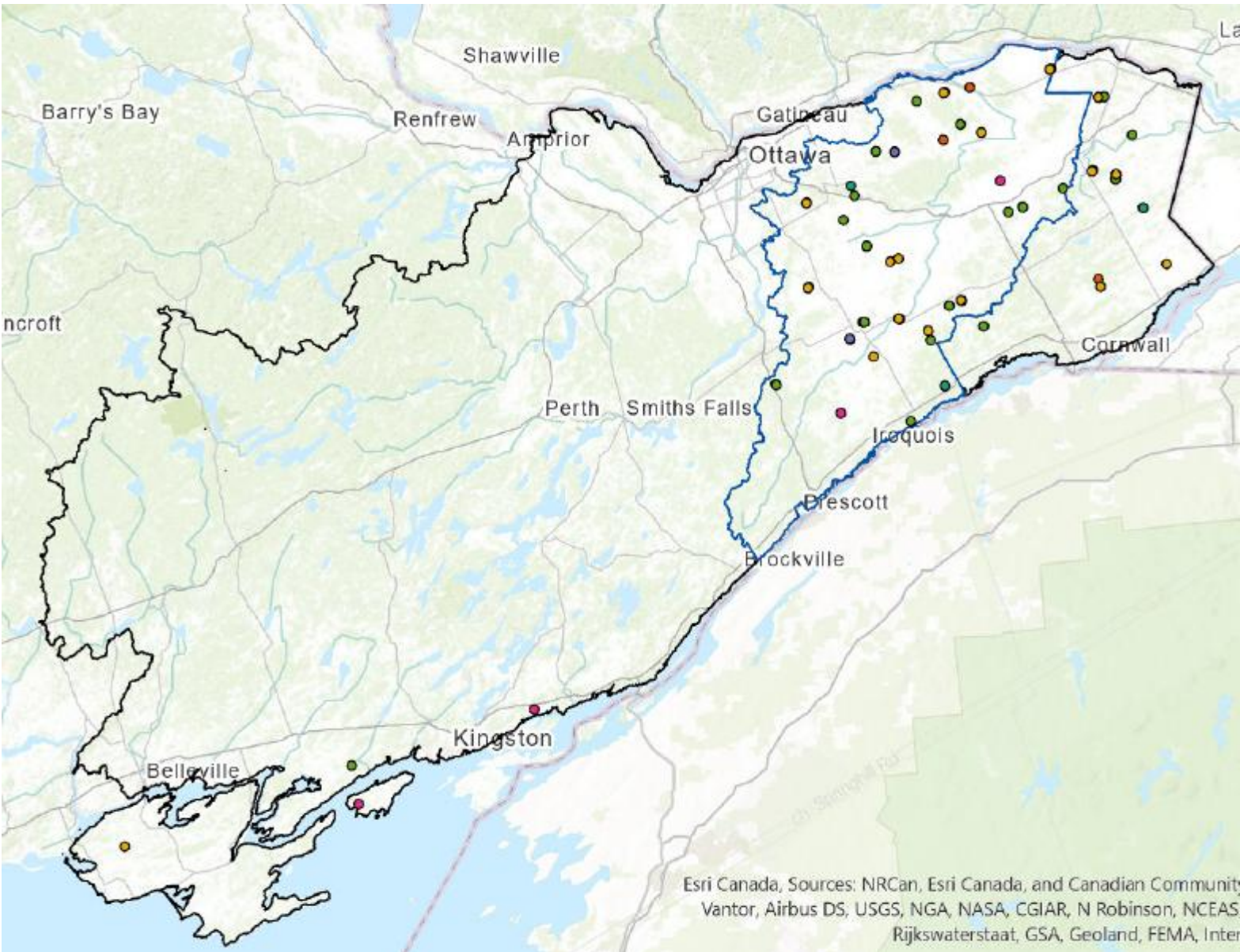


**Sunday, April 26<sup>th</sup>**

- Time TBD
- Findlay Creek Boardwalk West Entrance
- Celebrate donation of ~118 acres from Tartan Homes
- Findlay Creek Community Clean-up and Free Tree Giveaway



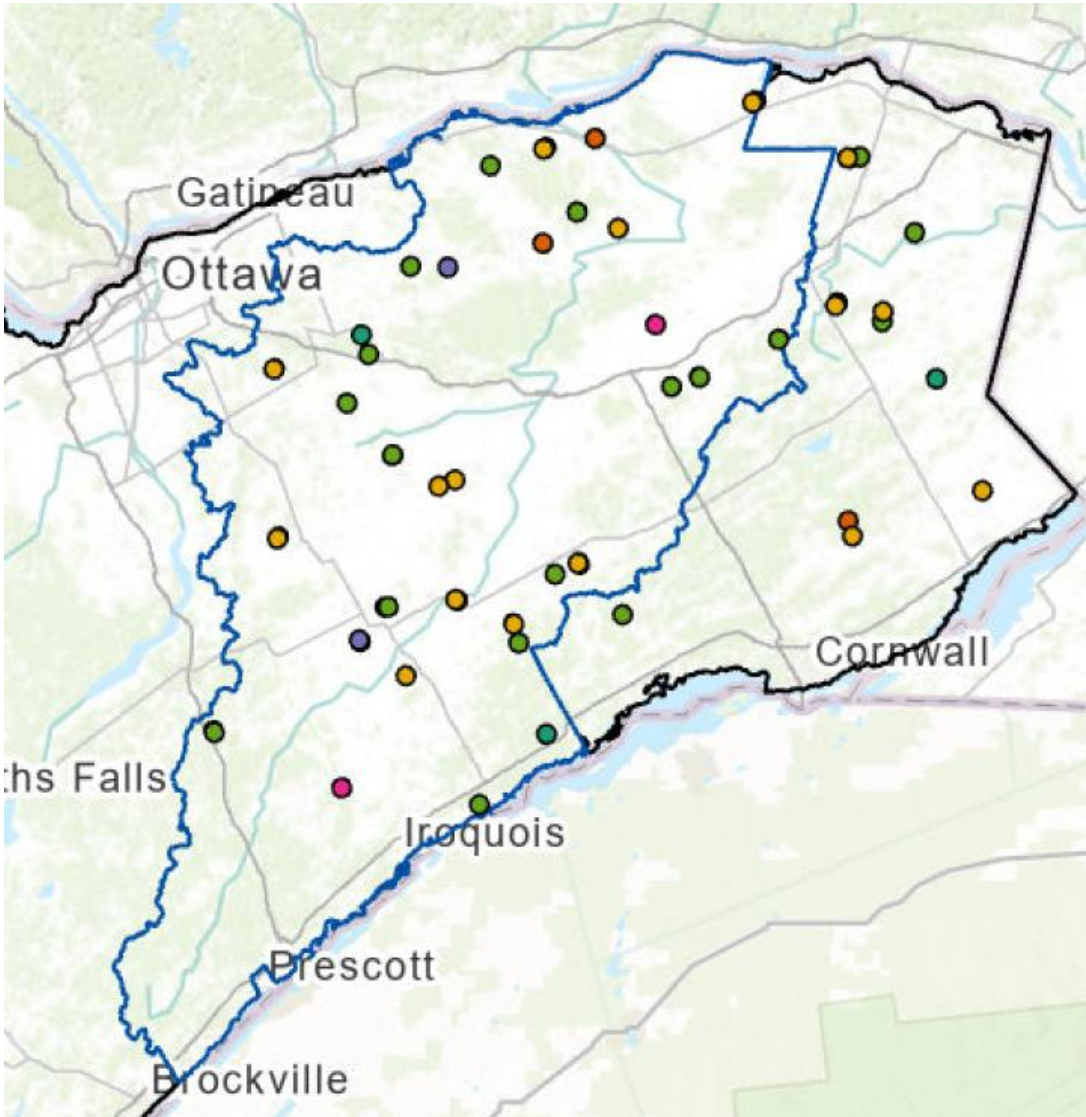
# RALP Marginal Lands Projects



Esri Canada, Sources: NRCan, Esri Canada, and Canadian Community Vantor, Airbus DS, USGS, NGA, NASA, CGIAR, N Robinson, NCEAS, Rijkswaterstaat, GSA, Geoland, FEMA, Inter



# RALP Marginal Lands Projects

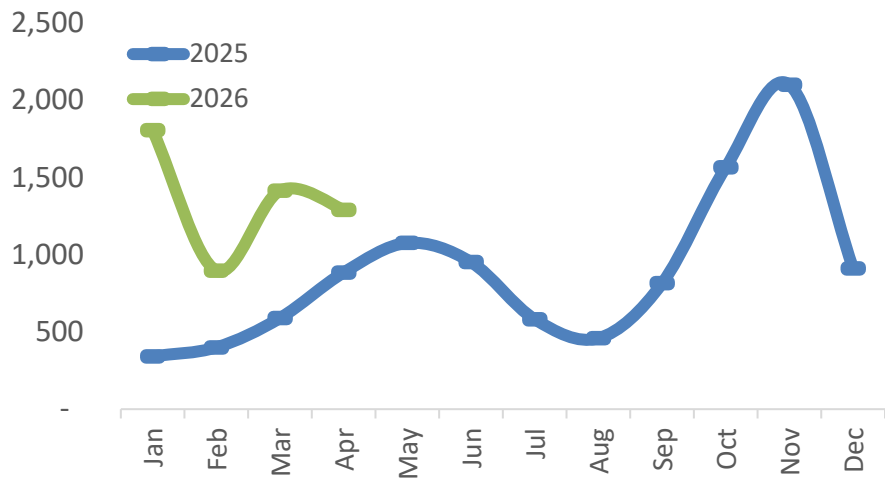


- 70 projects in progress
  - 8 block planting
  - 6 grassland
  - 4 pollinator habitat
  - 11 riparian buffer
  - 23 wetland
  - 18 windbreak

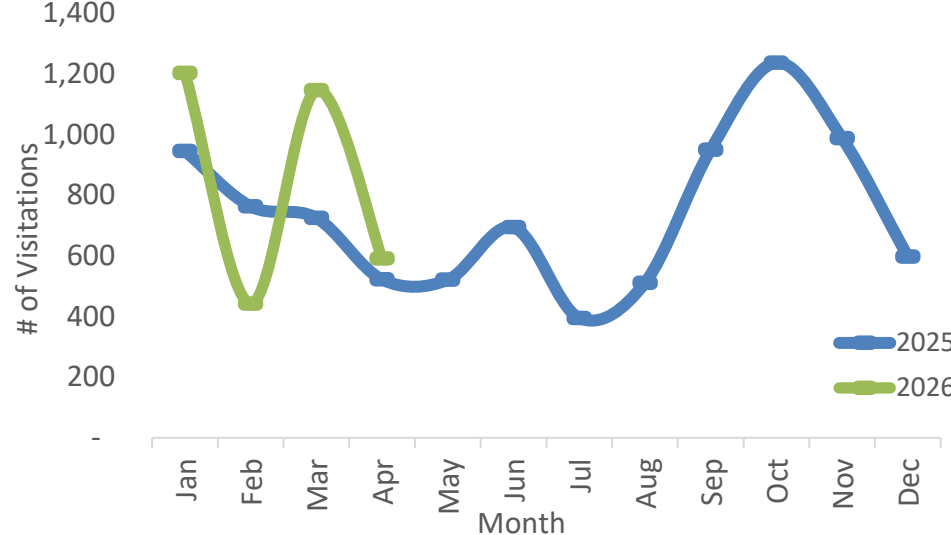


# Conservation Area Visitor Stats

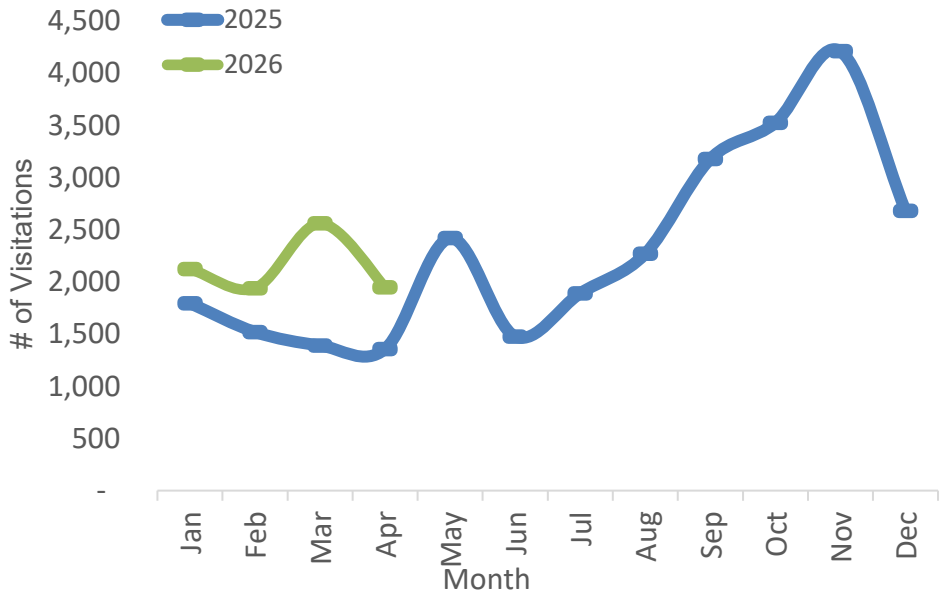
### Two Creeks Forest - 12.0%



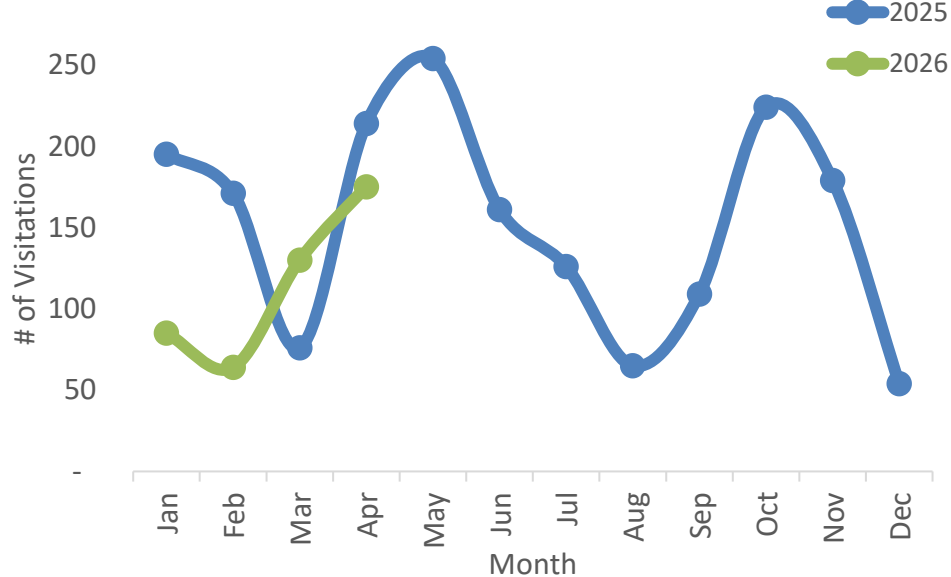
### Bob Graham Forest - 5.9%



### Warwick Forest - 26.0%



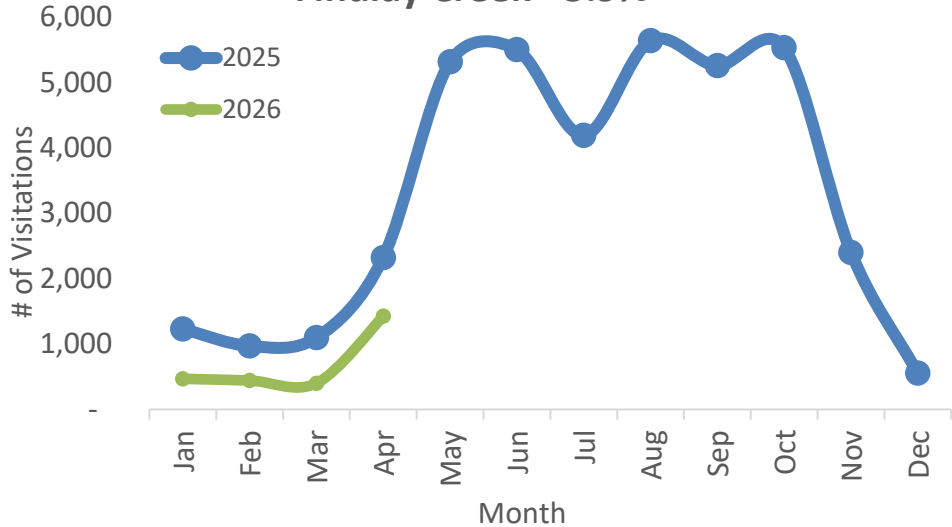
### Reveler - 0.9%



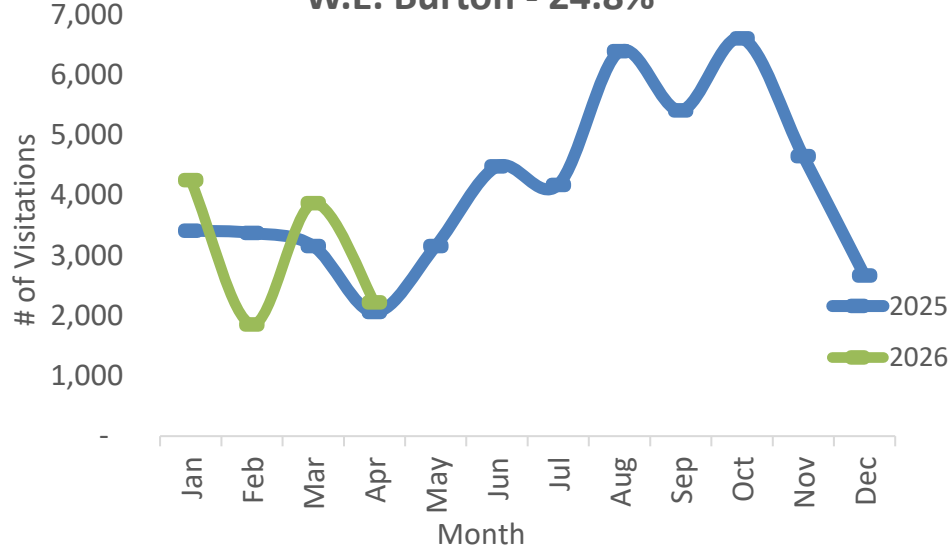


# Conservation Area Visitor Stats

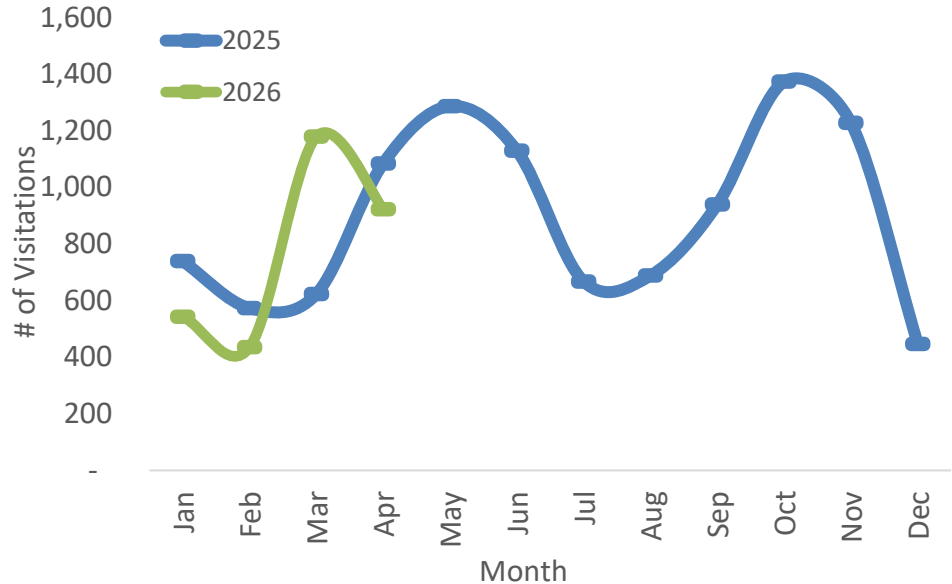
### Findlay Creek - 5.9%



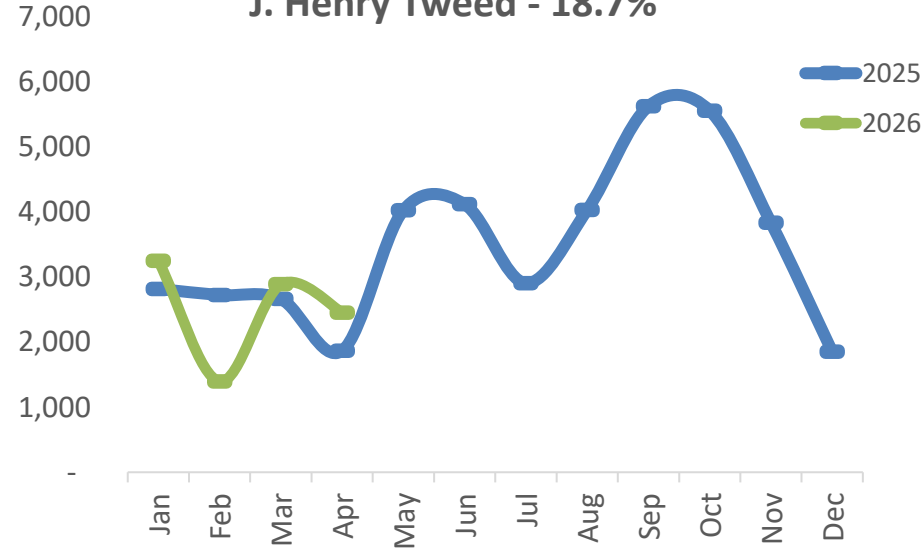
### W.E. Burton - 24.8%



### Oschmann Forest - 5.8%



### J. Henry Tweed - 18.7%

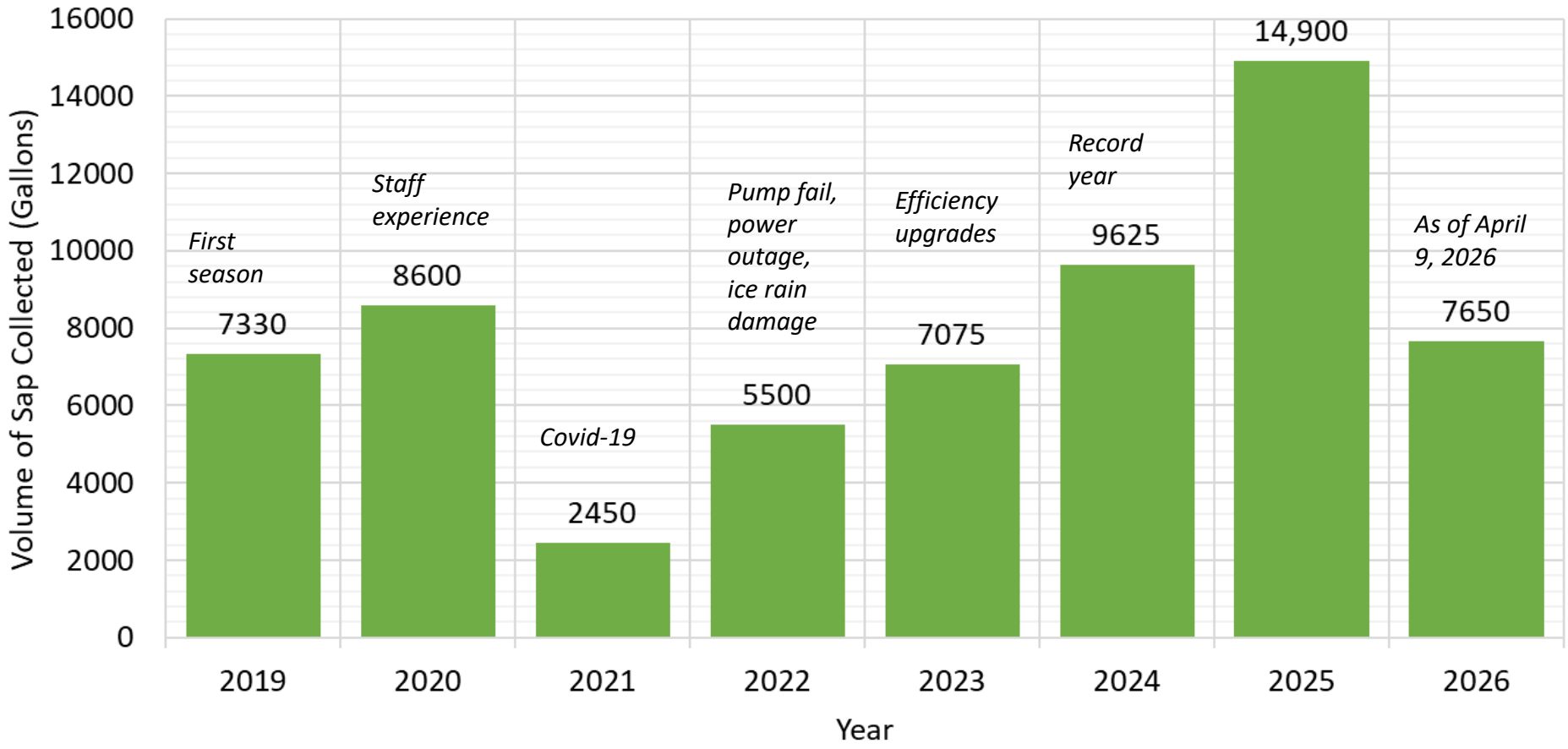




# Oschmann Forest – Maple Sap Collection

Collected Volume of Sap by Year (Oschmann Forest)

*Record year*





# SNC Inventory



SNC 179 - 5 acre block  
Red Pine dying



SNC 41/64 Red Pine  
Post Harvest Inspection



# Fun Things Found In The Field

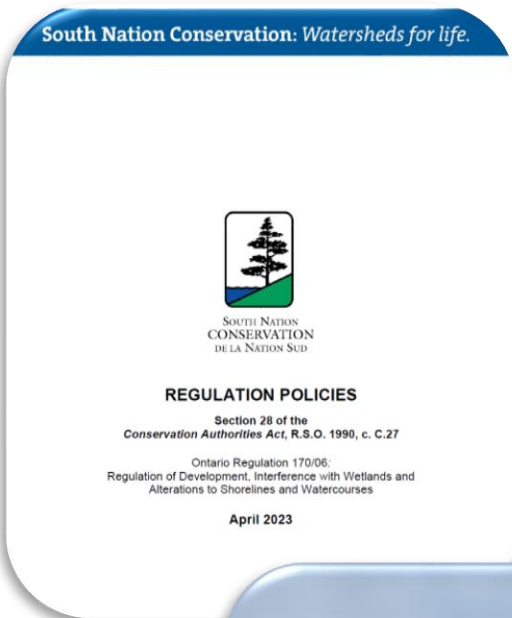


Two Creeks Forest Conservation Area





# Regulated Activities Policies and Procedures Update



CA Act Permit Inspection, City of Ottawa

- Updating policies for consistency with amendments to the Conservation Authorities Act.
- Draft will be shared with the Board as information at the May or June meeting.
- Minimal changes to existing policies regarding development activities in and around natural hazards and wetlands.



# Water Control Structures - Casselman Weir Project



Casselman Weir Sluiceway, winter 2020-2021

- SNC has applied for funding from the Water and Erosion Control Structures (WECS) program.
- An application package was sent to the MNR.
  - We are awaiting a permitting decision.
- The RFQ for the repairs returned 3 bids.
  - SNC staff will review and score the bids.



# Bear Brook Watershed Study Update

## Bear Brook Watershed Plan



### Characterization

2023 - 2025

- Existing Conditions Report
- Public Information Center #1



### Scenario Planning

2024 - 2026

- Land Use and Climate Change Impact Assessment
- Class EA Flood Mitigation Project
- Public Information Center #2



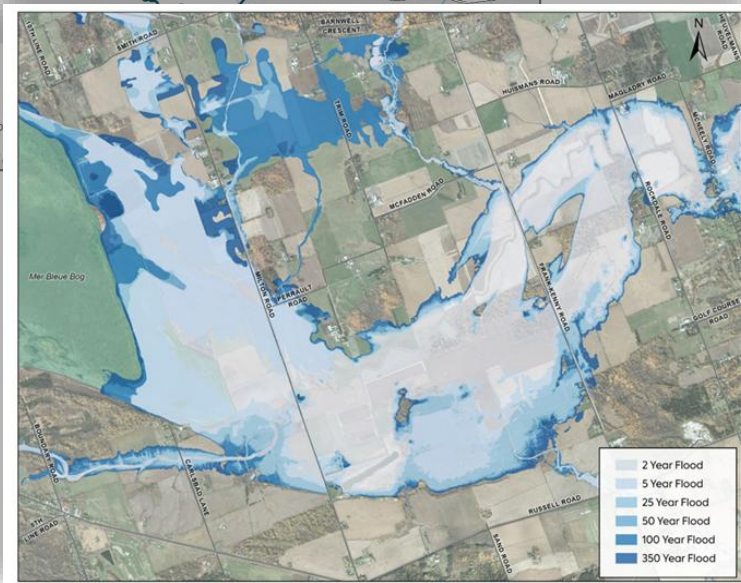
### Implementation

2026 - 2027

- Public Information Center #3
- Adoption of Watershed Plan
- Monitoring and Evaluation Plan



# Bear Brook Watershed Study Update



## Class Environmental Assessment:

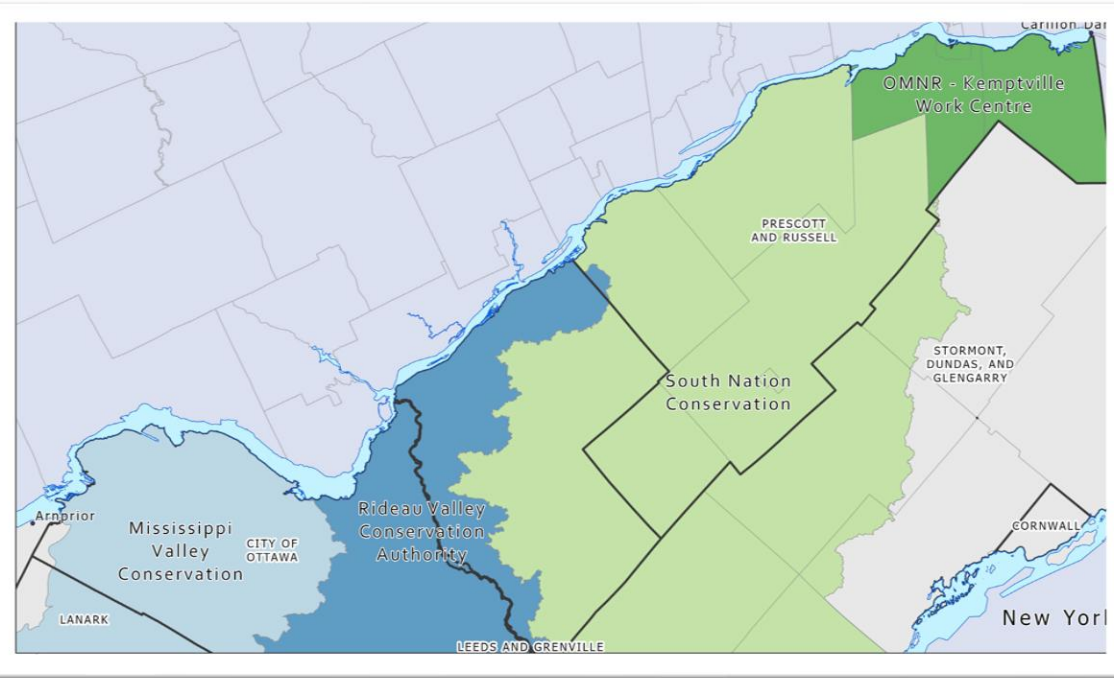
- Flood Damages Assessment complete
- Long-list of flood mitigation options

## Public Engagement:

- Technical Advisory Committee Meeting April 29<sup>th</sup>
- Next Public Information Centre: May/June – TBD



# Lower Ottawa River Flood Warning Working Group



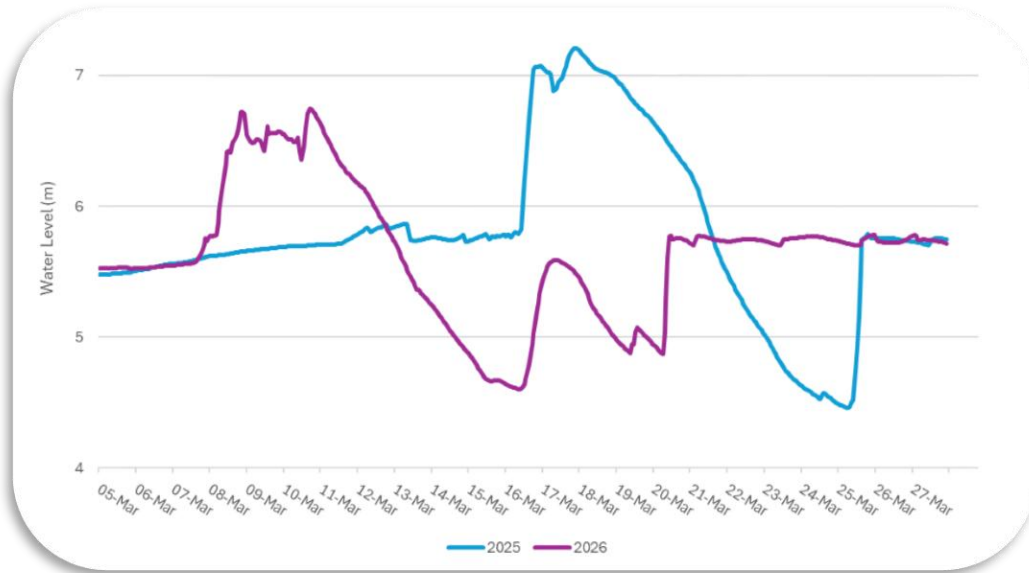
Lower Ottawa River Region and Members

- FFW Collaborative
  - Ottawa River Regulation Committee
  - Ministry of Natural Resources
  - Mississippi Valley CA
  - Rideau Valley CA
  - SNC
- SNC Working Group Chair 2026-2027
  - Prepare/translate flood messaging on behalf of program partners





# South Nation River Freshet Update



Freshet peak 2025 vs 2026, Chesterville Dam



Ice in flooded Payne River, Berwick, March 8th

- Freshet arrived on March 8th.
  - Main peak lasted about 2 days.
  - Secondary peaks on March 17<sup>th</sup> and April 5<sup>th</sup>.
- Variable temperatures prior to and following the freshet resulted in a milder season.
  - Positive during the day, negative at night.
- Much of the snowpack is gone, waterways are clear of ice.
  - No weather suggesting return to peak flows.

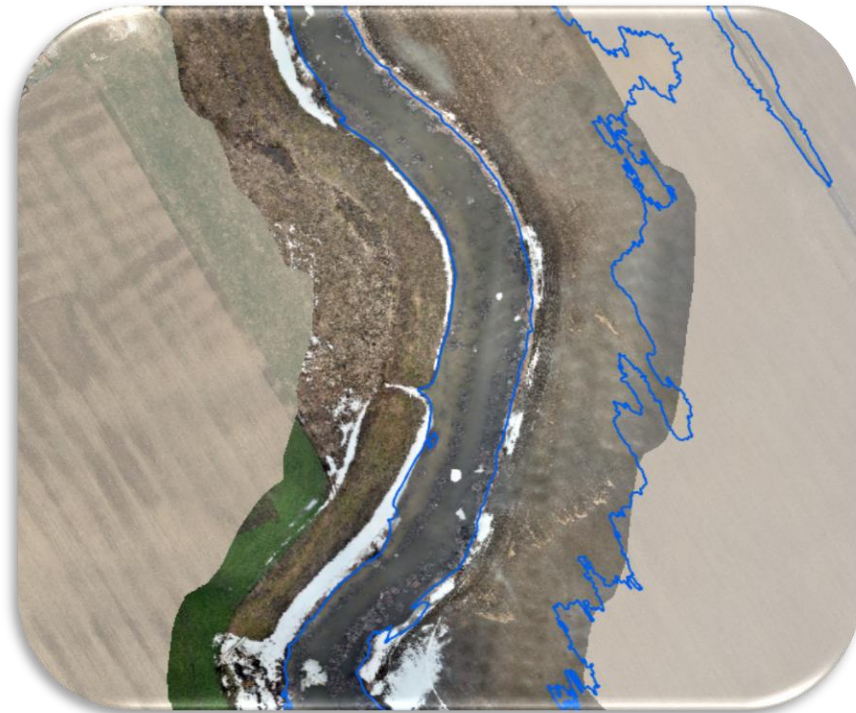


# Drone-Based Freshet Monitoring

- Captured drone imagery to observe flood conditions
- Supports calibration of floodplain models



South Branch of SNR at Snowbird Rd  
(DRAPE 2024 Imagery)



2-Year Modeled Floodplain Overlay – South Branch  
of SNR at Snowbird Rd (Drone Imagery)



# Drone-Based Freshet Monitoring





# Monitoring Update

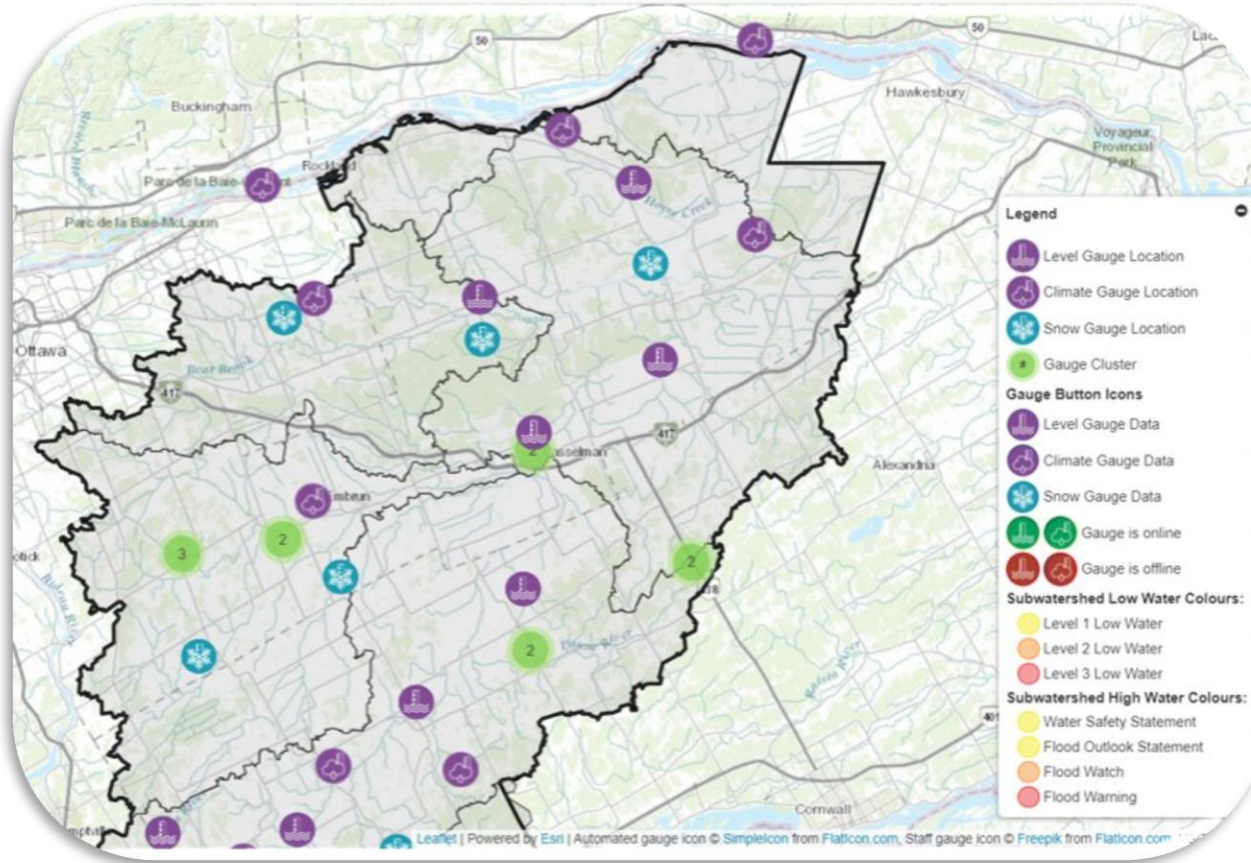


- New equipment to be installed and station maintenance this spring
- Ongoing work essential to Flood Forecasting and Warning and Low Water Response programs





# Monitoring Tools



- Providing near real-time access to timely, and accurate data
- Precipitation, water level, and flow

Our Local Environment, We're in it Together.



SOUTH NATION  
**CONSERVATION**  
DE LA NATION SUD