

SOUTH NATION CONSERVATION MUNICIPAL WORKPLAN EDWARDSBURGH CARDINAL



**SOUTH NATION
CONSERVATION**
DE LA NATION SUD



SOUTH NATION
CONSERVATION
DE LA NATION SUD

MESSAGE FROM THE CHAIR:

Dear Edwardsburgh Cardinal,

Conservation Authorities are community-based environmental organizations dedicated to conserving, restoring, developing, and managing natural resources on a watershed scale.

South Nation Conservation (SNC) exists because of local initiatives and we recognize the importance of our continued partnership with our 16-member municipalities. In 2019, we look forward to building on these relationships and continuing to deliver key programs and services on your behalf.

Please review this summary document prepared for your Municipality by SNC staff.

Bill Smirle,
Interim Chair, South Nation Conservation



OUR VISION

Improved Water Quality for a Healthy Ecosystem: Our vision encompasses water levels which satisfy the needs of humans and the environment, healthy rivers and natural shorelines, and safe wastewater management practices.

OUR MISSION

To ensure that the management of natural occurrences, natural resources, and human activities results in the protection or improvement of water resources.

OUR EXPERTISE

Conservation is our core competency. SNC offers knowledge and experience to help our partners contribute to a healthy region.



SOUTH NATION CONSERVATION ADMINISTRATION BUILDING, FINCH

FOSTERING LANDOWNER STEWARDSHIP



WHAT WE DO:

- Plant approximately 120,000 trees per year and provide subsidies on tree purchases for landowners. SNC has planted 3.2 million trees since 1990.
- Offer free site visits and resources to woodlot owners, and offer \$500 grants to help develop forest management plans.
- Provide over \$75,000 annually in funding to landowners for projects that protect water quality through the Clean Water Program.
- Own approximately 12,000 acres of land acquired through donation or purchase, following SNC's Land Securement Strategy.
- Manage over 20,000 acres of community forest in Eastern Ontario.

TO-DATE, IN EDWARDSBURGH CARDINAL:

- Planted 51,975 trees since 1990.
- Provided over \$141,480 in funding to local landowners for projects that protect water quality since 1998.

2019 PRIORITIES:

- In 2018, SNC published a report on "Protecting and Increasing Forest Cover in the South Nation Conservation Jurisdiction" following two years of consultation and review with local stakeholder working groups. In 2019, SNC will be working with municipalities to review and implement report recommendations.
- Through the Forest Conservation Initiative, SNC will be hosting community free tree days, creating riparian tree buffer demonstration sites and will offer a new increased tree planting subsidy to help plant more trees along fields and watercourses.
- SNC will continue to plant trees, manage community lands, offer resources, work with partners, and help fund important water quality improvement projects.



3 MILLIONTH TREE
PLANTED SINCE 1990!



SOUTH NATION
CONSERVATION
DE LA NATION SUD

IN 2018, SNC PLANTED ITS 3 MILLIONTH TREE SINCE 1990

PROTECTING PEOPLE AND PROPERTY AND SUPPORTING SUSTAINABLE DEVELOPMENT



WHAT WE DO:

- Map floodplains and other natural hazards, review construction and approve projects in and around watercourses, floodplains and wetlands.
- Conduct septic system inspections and permits for 13 municipalities.
- Work to protect drinking water through the Source Water Protection program.
- Flood Forecasting and Warning provides advance notice of flood conditions and updates on watershed conditions during flood events for the South Nation, Ottawa and St. Lawrence Rivers.
- Low Water Response provides declaration of drought conditions and offers guidance for reducing water consumption based on condition severity.
- Operate and maintain 7 water control structures.

TO-DATE, IN EDWARDSBURGH CARDINAL:

- 3.2 km² of flood hazard maps are regulated.

LAST YEAR, IN EDWARDSBURGH CARDINAL:

- 24 Planning Act application reviews.
- 15 permits processed.
- 5 low water advisory memos issued.
- 11 watershed conditions and flood statements issued.

2019 PRIORITIES:

- Provide engineering services to member municipalities as needed.
- Continued maintenance of important water control structures.
- Provide emergency management services through Flood Forecasting and Warning and Low Water Response programs. SNC issues statements to allow member municipalities and the public to respond to flood and low water conditions; accessible online.
- SNC will be acquiring state-of-the-art aerial imagery (LiDAR) with high resolution topography along the St. Lawrence River.



SURVEYS FOR FLOODPLAIN MAPPING

PROVIDING NATURAL SPACES AND RECREATIONAL OPPORTUNITIES



WHAT WE DO:

- Own and manage over 12,000 acres of public, natural spaces.
- Operate 14 day-use parks and trails, including 9 public river access points.
- Protect environmentally significant properties and accept land donations.
- Protect over 7,000 km of fish habitat which support 72 fish species, offering endless recreational fishing opportunities.

LAST YEAR, IN THE SNC JURISDICTION:

In 2018, SNC's network of 14 Conservation Areas welcomed over 80,000 visitors to hike, geocache, picnic, kayak, canoe, launch their boat, bird watch, fish, and enjoy their local environment.

- SNC installed 100 new signs across its Community Lands to identify ownership and promote sustainable, proper management of forests; another 100 signs will be installed in 2019.
- An asset inventory was completed on SNC lands to help guide future management decisions, maintenance plans and park upgrades. The continuation of the park monitoring program will review visitor impact and help create memorable visitor experiences.

2019 PRIORITIES:

- SNC will continue to work with partner municipalities to increase visitor safety and enhance emergency preparedness at Conservation Areas.
- SNC is committed to regular maintenance and upkeep of parks and trails to ensure accessible recreation for residents. This includes grooming year-round to ensure safe trails during every season.



KAYAKERS ENJOY THE SOUTH NATION RIVER AT THE SPENCERVILLE MILL

MAKING SCIENCE BASED DECISIONS



WHAT WE DO:

- Collect water quality, stream health, fisheries and forestry data to support stewardship programs and guide sustainable development.
- Invasive species management and species at risk habitat assessments.
- Produce Subwatershed Report Cards and other reports on environmental health.
- Monitoring weather and water with groundwater and surface water stations.

TO-DATE, IN EDWARDSBURGH CARDINAL:

- 7 sites monitored through the Ontario Stream Assessment Protocol.
 - Sites have been evaluated for factors such as channel morphology, bank stability, stream flow, water quality, invertebrate composition, and fish community composition. Data guides habitat restoration priorities.
- 1 surface water monitoring station outfitted with a rain gauge located on the South Nation River in Spencerville.
- In 2018, SNC released its South Nation Watershed Report Card: State of the Nation. This document provides watershed health information on natural resources and habitat features within the region.
- SNC has developed a new hydrological model for the South Nation Watershed which enhances Flood Forecasting and Warning and Low Water Response Programs. In 2019, SNC will be seeking funding to expand the model to make results publicly accessible online.

2019 PRIORITIES:

- Subwatershed Report Cards are produced annually in different regions following a year of monitoring; reporting on surface and groundwater quality along with forest and wetland cover. The recently published report on the Lower South Nation Subwatershed highlights conditions in northern municipalities; SNC will be working on the Upper South Nation Subwatershed Report Card in 2019. Reporting is based on a 5-year rotation of monitoring programs.



EMPOWERING COMMUNITIES AND YOUTH



WHAT WE DO:

- Deliver curriculum-based education programs to over 2,000 local youth every year; including Youth Fish Camps, Youth Hunt Apprenticeships, the Stream of Dreams Community Art and Environmental Education Program, and the newly relaunched Maple Syrup Education Program.
- Regularly attend community events and fairs to network with residents and highlight SNC's programs and services.
- Offer over \$10,000 in Community Environmental Grants to non-profit community groups.
- Partner with school boards to deliver environmental high school program certifications.

LAST YEAR, IN THE SNC JURISDICTION:

- SNC released its Community Lands Geopassport, guiding users through a real-life geocaching adventure on SNC Community Lands to learn more about the important benefits of forests.
- SNC hosted high school students at various project sites for Specialist High Skills Major certifications towards their high school diplomas.
- SNC delivered the Stream of Dreams program to nearly 1,000 local students.
- Thanks to support from Federal and Provincial funding agencies, SNC hires several local summer students every year from across its 4,384 square-kilometer jurisdiction in Eastern Ontario.
- SNC hosted dozens of local youth at its annual Fish Camps and Hunt Apprenticeship Programs.
- SNC worked with its local partners to help organize and host community events across the jurisdiction.

2019 PRIORITIES:

- SNC is relaunching its Maple Syrup Education Program for the 18th season at the Oschmann Forest in North Dundas. The not-for-profit education program hosts hundreds of local students a year, providing them with a hands-on environmental learning experience at a local sugar shack.
 - Students learn about the process of maple syrup production as it has evolved from First Nations traditions through to modern day production techniques. The program supplements the Ontario science curriculum and includes key teachable moments in areas of natural heritage, forest management, and ecosystem habitats.
- SNC will continue to work with its regional partners and member-municipalities to deliver meaningful environmental education and host community events across the jurisdiction.
- SNC will work with partners to create a new strategic vision and plan to position the Authority beyond the year 2020.



IN 2018, SNC HELPED ORGANIZE THE CARDINAL
NON-MOTORIZED CANOE AND KAYAK POKER RUN

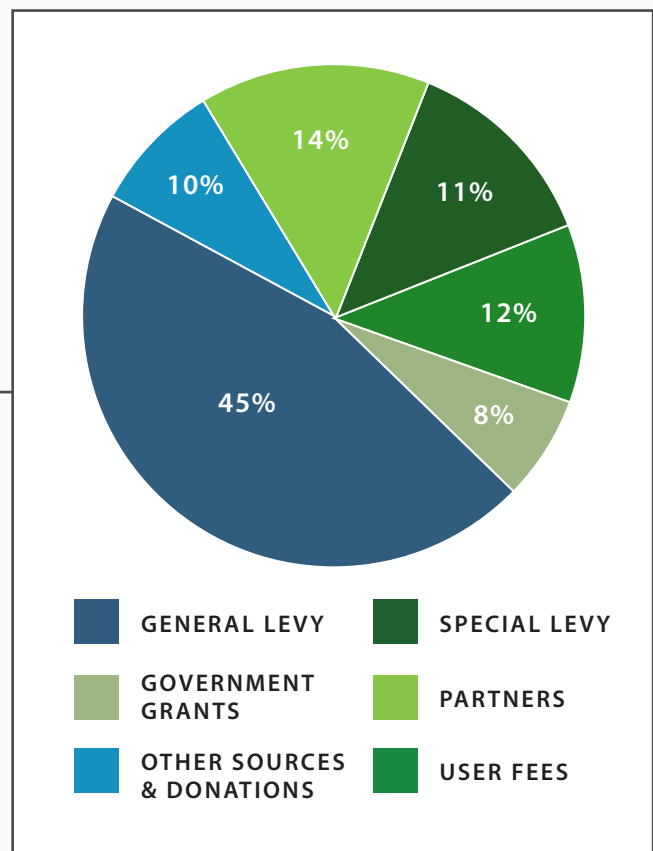
YOUR PARTNER IN CONSERVATION

South Nation Conservation (SNC) contributes to the local environment thanks to the funding support of SNC's 16 member municipalities and self-generated revenue from donations, partnerships, and government grants.

2019 SNC BUDGET SUMMARY

Budget: \$7,494,977

- General Levy: \$3,360,323
- Special Levy: \$829,853
- Government Grants: \$592,852
- Partners: \$1,065,351
- User Fees: \$935,700
- Other Sources and Donations: \$710,898



For every \$100,000 in household assessment, your municipality contributes \$5.61 on average to South Nation Conservation. These contributions allow SNC to provide programs and services that promote watershed management, sustainability, and the protection of people and property.



SNC STAFF TREE PLANTING
AT WARWICK FOREST



HOOP NETTING FISH
SURVEYS ON THE
SOUTH NATION RIVER



SNC'S FIRST STREAM OF
DREAMS IN ROCKLAND



STAFF SURVEY WILD RICE
ALONG THE SOUTH
NATION RIVER

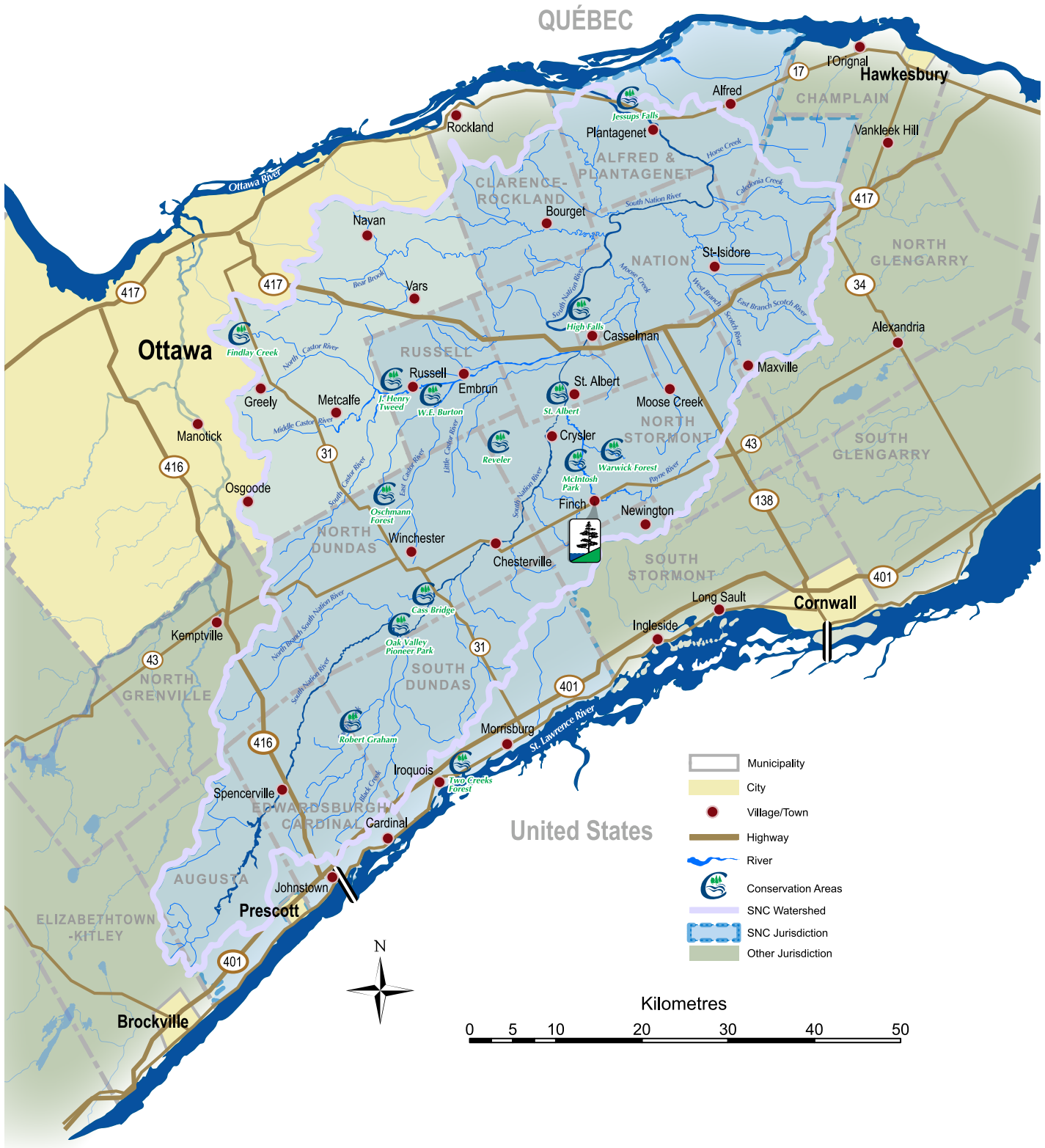


SNC RAIN GAUGE FOR
COLLECTION OF
PRECIPITATION DATA



BEE-KEEPING ON SNC
COMMUNITY LANDS AT
AMBROSIA APIARIES
IN BERWICK

OUR LOCAL ENVIRONMENT; WE'RE IN IT TOGETHER.



**SOUTH NATION
CONSERVATION
DE LA NATION SUD**

South Nation Conservation
38 Victoria Street
Finch, ON K0C 1K0

T: 1.877.984.2948
info@nation.on.ca
nation.on.ca

