



SOUTH NATION
CONSERVATION
DE LA NATION SUD

38 rue Victoria Street, Finch, ON K0C 1K0 Tel: 613-984-2948 Fax: 613-984-2872 Toll Free: 1-877-984-2948 www.nation.on.ca

Leitrim Wetland Advisory Committee

Meeting Agenda

Date: October 23rd, 2020

Time: 10:00 a.m.

Location: Virtual meeting – details provided via email prior to meeting





Leitrim Wetland Advisory Committee

Meeting Agenda

October 23rd, 2020 – 10:00 a.m.

1. Chair's Remarks
2. Approval of Agenda
3. Approval of Leitrim Wetland Advisory Committee meeting minutes of June 12th, 2020 3 – 8
4. Leitrim Wetland Project Update – PowerPoint Presentation: Staff
5. New Business: 9 – 14
 - a. Finlay and North Castor River Floodplain Mapping: John
 - b. Partner Updates:
 - i. National Capital Commission Update (verbal)
 - ii. Findlay Creek Community Update (verbal)
 - iii. Tartan/Tamarak Homes Update (verbal)
 - iv. City of Ottawa Update (verbal)
6. Roundtable Discussion
7. Supplemental Agenda (if any)
8. Next Meeting: To Be Confirmed
9. Adjournment

Ronda Boutz,
Team Lead, Special Projects.



Leitrim Wetland Advisory Committee (LWAC) Meeting

Friday, June 12th, 2020 – Meeting No. 01/20



Members:

Bill Smirle, SNC Board Chair / LWAC Chair
Julia Hamilton, Findlay Creek Community Association Member
Carol Anne Meehan, City Councillor, Ward 22, Ottawa
Alexander Stone, National Capital Commission
Wendy Tse, City of Ottawa
Doug Thompson, SNC Past Chair

Regrets:

Andrew Levitan, Tartan Homes
Melissa Cote, Tartan Land Consultants
Laura Dingle Robertson, Findlay Creek Community Member
Scott Smithers, Ministry of Natural Resources and Forestry

Staff:

Ronda Boutz, Team Lead, Special Projects
Michelle Cavanagh, Team Lead, Stewardship
John Mesman, Team Lead, Communications and Outreach
Katherine Watson, Water Resources Specialist



CHAIR'S REMARKS

Bill Smirle, Committee Chair, called the Leitrim Wetland Advisory Committee meeting of June 12th, 2020 to order at 10:00 a.m. The Chair lead a roundtable of introductions of the Committee members.

Doug Thompson joined the meeting at 10:05 a.m.

APPROVAL OF LEITRIM WETLAND ADVISORY COMMITTEE MEETING AGENDA

RESOLUTION NO. LWAC-001/20

Moved by: Doug Thompson
Seconded by: Carol Anne Meehan

RESOLVED THAT:

The Leitrim Wetland Advisory Committee approve the agenda of June 12th, 2020 as submitted.

CARRIED

APPROVAL OF LEITRIM WETLAND ADVISORY COMMITTEE MEETING MINUTES OF NOVEMBER 1ST, 2019

RESOLUTION NO. LWAC-002/20

Moved by: Julia Hamilton
Seconded by: Alexander Stone

RESOLVED THAT:

The Leitrim Wetland Advisory Committee meeting minutes of November 1st, 2019 be approved as presented.

CARRIED

LEITRIM WETLAND PROJECT UPDATE - POWERPOINT

SNC staff provided an update on planned outreach activities and the Findlay Creek Boardwalk. The Committee discussed the usage and ongoing vandalism occurring at the boardwalk.

SNC will partner with Councillor Meehan on an outreach campaign to address the ongoing vandalism at the boardwalk.



NEW BUSINESS

2020 WORK PLAN UPDATE AND BUDGET

RESOLUTION NO. LWAC-003/20

Moved by: Wendy Tse
Seconded by: Julia Hamilton

RESOLVED THAT:

The Leitrim Wetland Advisory Committee approve the Leitrim Wetland 2020 Work Plan and Budget.

CARRIED

Doug Thompson left the meeting at 10:20 a.m.

2020 SNC FIELD WORK UPDATE

RESOLUTION NO. LWAC-004/20

Moved by: Carol Anne Meehan
Seconded by: Alexander Stone

RESOLVED THAT:

The Leitrim Wetland Advisory Committee receive and file the 2020 Field Work Update.

CARRIED

FINDLAY CREEK BOARDWALK EXTENSION

RESOLUTION NO. LWAC-005/20

Moved by: Wendy Tse
Seconded by: Alexander Stone

RESOLVED THAT:

The Leitrim Wetland Advisory Committee support the Findlay Creek Boardwalk Extension project.

CARRIED



NATIONAL CAPITAL COMMISSION (NCC) UPDATE (VERBAL)

The NCC commissioned a study on Blanding's turtle, western chorus frog and snapping turtle over the past two years using multiple survey strategies. A new survey strategy called environmental DNA monitoring was developed by the Université du Québec en Outaouais as part of the project for these three species. Following the surveys, with direction from Dr. Gabriel Blouin-Demers' laboratory, a landscape analysis map was produced detailing likely areas where Blanding's turtles may be present across the Greenbelt and the City of Ottawa. However, these types of analyses do not replace required surveys under environmental legislation.

Turtles are declining largely from anthropogenic land-use changes, habitat fragmentation and directly from road mortality. Blanding's turtles are slow to reproduce and have been designated as *Threatened* both Federally and Provincially. These turtles are mobile and often range 2-3km from their home area. The technical report will be sent to experts and a 10-page report will be made available to the committee before the next meeting.

The NCC-Greenbelt has also piloted a three-year study on road mortality in 2017, 2018, 2019 with technical reports submitted. These surveys are used to identify areas that are used by turtles to move across wetlands. Our area of focus is largely on wetlands within the Greenbelt such as the Lester Wetland that are fragmented by roads. These data are used to inform decision-making from a natural resiliency and biodiversity standpoint to provide engineering solutions to reduce turtle and amphibian mortality along these roads – particularly along Albion Road, in conjunction with the City of Ottawa.

The NCC Capital Pathway Network is available for public consultation until **June 17, 2020**. Some of the proposed pathways are in proximity to Leitrim/Albion/Bank roads. Comments are welcome at this link: <https://ncc-ccn.gc.ca/our-plans/capital-pathway-strategic-plan>

There is an existing trail network centered at Parking Lot 16, beside the now defunct Capital Golf Course. The golf course lands have been transferred for conservation purposes and to promote recreational activity in this area.

The NCC has had an increase in vandalism and fires across the Greenbelt, similar to those experienced by South Nation Conservation Authority.

Addendum: Although likely outside of the Greenbelt and NCC jurisdiction, at the staff level, the NCC supports additional recreational activity, such as a boardwalk extension of Leitrim Wetland.

FINDLAY CREEK COMMUNITY ASSOCIATION UPDATE (VERBAL)

Spring clean-up cancelled due to COVID-19. Some local residents are cleaning up on their own. Community Association is hoping to reschedule clean-up in the fall.



TARTAN HOMES UPDATE (DEFERRED)

CITY OF OTTAWA UPDATE (VERBAL)

New application for draft plan subdivision has been received from Tartan for lands west of Kelly Farm Drive, south of Leitrim Road for a residential subdivision to contain approximately 388 residential units with a combination of single detached and townhomes, one park is proposed.

Review of the following subdivisions for registration is on-going:

- Tartan: Phase 4-2 of Barrett subdivision (east of Kelly Farm, south of Leitrim and east of the Phase 4-1 lands currently under construction)
- Regional Group: Phase 3 of Pathways (immediately east of the Leitrim Wetland)
- Claridge: Lilythorne (east of Bank, south of Analdea)

Since our last meeting, the following approvals have been given:

- Registration of subdivision on the lands known as Idone, now referred to as Pathways South (north of the urban boundary, south of Pathways Subdivision)
- Site plan approval for a block within Pathways Phase 1 lands for 34 townhome units on a private road

On-going site plan approvals:

- 4836 Bank Street: Redevelopment of Home Hardware site with a new building centre, two commercial pads and a hotel
- 1055 Cedar Creek: Planned unit development consisting of 2 18-unit apartment buildings, 4 12-unit back to back stacked towns, 1 8-unit back to back stacked

Work continues on the update to the Official Plan and with the recent approval by Council to add lands to the Urban Boundary, the OP Team is now screening potential sites through the established criteria and may include lands in the Leitrim area. Through the Official Plan Review in 2009, in the Leitrim area, the following lands were added:

- Regional Remer and Idone lands
- Claridge Lilythorne lands
- Urbandale Cowan's Grove lands

ROUNDTABLE DISCUSSION

No further comments or discussion

NEXT MEETING DATE:

October 23rd, 2020 at 10:00 a.m., location to be confirmed.



ADJOURNMENT

RESOLUTION NO. LWAC-006/20

Moved by: Carol Anne Meehan

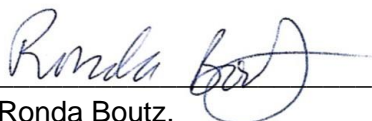
Seconded by: Alexander Stone

RESOLVED THAT:

The Leitrim Wetland Advisory Committee of
June 12th, 2020 be adjourned at 11:36 a.m.

CARRIED

Bill Smirle,
Committee Chair.



Ronda Boutz,
Team Lead, Special Projects.



To: Leitrim Wetland Advisory Committee
From: John Mesman, Team Lead, Communications and Outreach
Date: October 15, 2020
Subject: Update: Findlay Creek Floodplain Mapping

RECOMMENDATION:

The Committee receive and file the update on SNC's online public information session for updated floodplain and erosion hazard mapping for the Findlay Creek and North Castor River in the City of Ottawa.

DISCUSSION:

Natural hazard (floodplain and erosion) maps are used by Municipalities and Conservation Authorities when updating Official Plans and zoning schedules, and in reviewing development applications to guide sustainable development activities and to protect people and property from natural hazards.

South Nation Conservation (SNC) works with its municipal partners to update hazard mapping on their behalf. Updates to mapping through Section 28 of the Conservation Authorities Act under *Ontario Regulation 97/04: Development, Interference with Wetlands and Alterations to Shorelines and Watercourses* require public consultation.

Updated Consultation Plan

At the request of the City of Ottawa, SNC has updated natural hazard regulation maps for Findlay Creek and the North Castor River.

Due to the COVID-19 Pandemic and restrictions on gatherings, SNC amended its consultation plan to permit online participation and additional engagement tactics (BD-123/20).

Letters have been circulated to affected property owners with the new draft maps and details on the online public information session. Residents are also invited to schedule meetings with staff to discuss the new maps either in-person or online.

A copy of the resident letters and draft maps are attached for information.



SOUTH NATION
CONSERVATION
DE LA NATION SUD

FINANCIAL IMPLICATIONS/ADHERENCE TO SNC POLICY:

Compliance with Budget: Floodplain Mapping Open Houses in the City of Ottawa are included in the 2020 SNC Budget under Projects: City of Ottawa – Floodplain Mapping, pages 58 and 59.

SNC Policy Adherence: All open house expenditures will adhere to SNC's Purchasing Policy: Purchasing Limits – Team Lead's approved limit of up to \$5,000.

Public consultation activities will adhere to SNC's Communication Plan for Updated Regulations and Natural Hazard Mapping.

John Mesman,
Team Lead, Communications and Outreach.

Attachment: Landowner Letter and Draft Map: Findlay Creek Floodplain Update



September 29th, 2020

RE: Public Information Session for Natural Hazard Maps along Findlay Creek and North Castor River in the City of Ottawa

Dear Property Owner or Resident,

South Nation Conservation (SNC) invites you to attend an online public information session to learn more about new floodplain and erosion hazard maps for your area within the City of Ottawa. A copy of the draft maps are enclosed.

Please join us online:

Tuesday, November 10th, 2020
7:00 pm to 8:00 pm
Livestream available at:
www.youtube.com/SouthNationCA

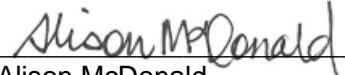
Natural hazard maps are used by the City of Ottawa and SNC when updating official plans and zoning schedules, and in reviewing development applications to protect people and property from natural hazards and guide sustainable development activities.

Development projects within natural hazard areas (like floodplains) require permission from the Conservation Authority before proceeding. SNC updates natural hazard maps on behalf of its partner municipalities when requested.

The virtual session will include an overview presentation from SNC staff on the new floodplain and erosion hazard mapping within your area.

Following the information session, residents who wish to learn more can schedule an online meeting with SNC staff, or in-person (by appointment only) at SNC's office in Finch, Ontario. Meetings may be scheduled on weekdays and evenings between November 16th and 27th. Please contact info@nation.on.ca or call 1-877-984-2948.

Kind Regards,


Alison McDonald,
Team Lead, Planning,
South Nation Conservation.
amcdonald@nation.on.ca
1-877-984-2948





SOUTH NATION
CONSERVATION
DE LA NATION SUD

Le 29 septembre 2020

Objet : Séance d'information publique sur les cartes des risques naturels le long du ruisseau Findlay et de la rivière North Castor dans la ville d'Ottawa

À l'attention du (de la) propriétaire ou résident(e),

La Conservation de la Nation Sud (CNS) vous invite à participer à une séance d'information publique en ligne pour en savoir plus sur les nouvelles cartes des risques d'inondation et d'érosion pour votre région dans la ville d'Ottawa. Vous trouverez ci-joint une copie des cartes provisoires.

Veillez vous joindre à nous en ligne :

Mardi 10 novembre 2020
De 19 h 00 à 20 h 00
Diffusion en direct disponible à l'adresse suivante
www.youtube.com/SouthNationCA

Les cartes des risques naturels sont utilisées par la ville d'Ottawa et la CNS pour la mise à jour des plans officiels et des plans de zonage, ainsi que pour l'examen des demandes d'aménagement visant à protéger les personnes et les biens des risques naturels et à orienter les activités de développement durable.

Les projets de développement dans les zones exposées aux risques naturels (comme les plaines inondables) doivent être autorisés par l'Office de protection de la nature avant d'être mis en œuvre. La CNS met à jour les cartes des risques naturels pour le compte de ses municipalités partenaires, sur demande.

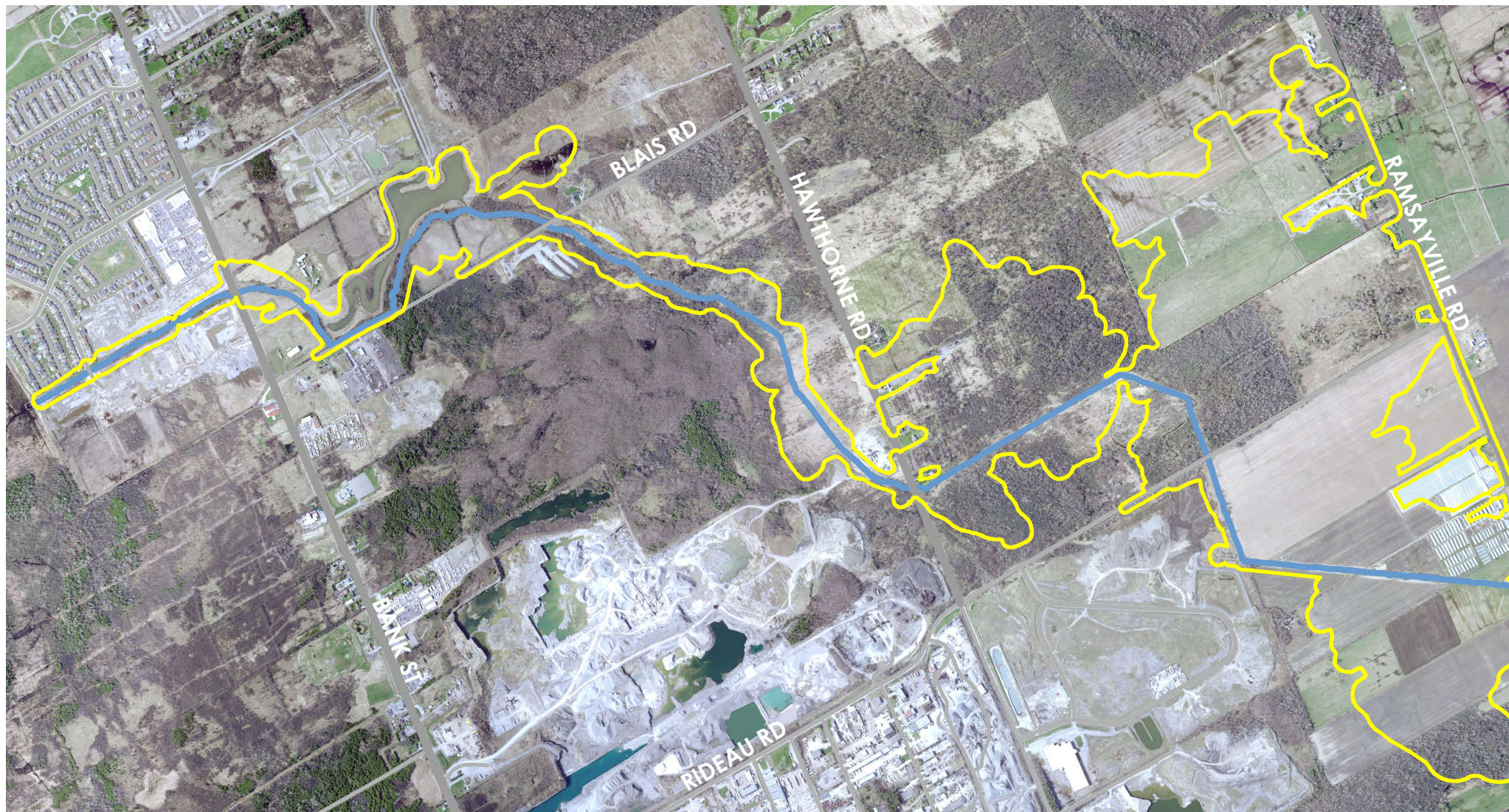
La séance virtuelle comprendra une présentation générale par le personnel de la CNS sur la nouvelle cartographie des risques d'inondation et d'érosion dans votre région.

Après la séance d'information, les résidents qui souhaitent en savoir plus peuvent organiser une réunion en ligne avec le personnel de la CNS, ou en personne (sur rendez-vous uniquement) au bureau de la CNS à Finch, en Ontario. Les réunions peuvent avoir lieu en semaine et en soirée entre le 16 et le 27 novembre. Veuillez contacter info@nation.on.ca ou appeler le 1-877-984-2948.

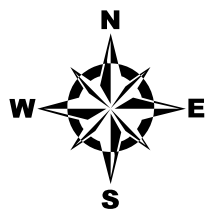
Bien à vous,

Alison McDonald,
Chef d'équipe, Planification,
Conservation de la Nation Sud.
amcdonald@nation.on.ca
1-877-984-2948

00012



SOUTH NATION
CONSERVATION
DE LA NATION SUD



1:20,000

 Draft Natural Hazard Regulated Area

 Watercourse



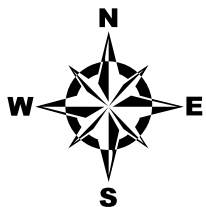
FINDLAY CREEK & NORTH CASTOR RIVER DRAFT NATURAL HAZARD MAPPING

This map and the associated information displayed thereon are to be used for general illustrative purposes only, and is not suitable or intended for navigation, legal, engineering or surveying purposes. Although best efforts have been made to create accuracy, due to the complex and extensive nature of the data, all representations and/or information provided herein are approximate and users should consult the primary data and information sources to confirm the accuracy of the map. The Municipality and the South Nation Conservation Authority, their employees and agents, do not guarantee the accuracy of the map, and will not be liable for any claims for damages or loss arising its use. The user hereby accepts and assumes all inherent risks associated with the use of this map. This map is produced in part with data provided by the Ontario Geographic Data Exchange under Licence with the Ontario Ministry of Natural Resources and the Queen's Printer for Ontario, 2014. Orthophotography © Aéro-Photo inc. 2014

00013



SOUTH NATION
CONSERVATION
DE LA NATION SUD



1:50,000

 Draft Natural Hazard Regulated Area

 Watercourse



FINDLAY CREEK & NORTH CASTOR RIVER DRAFT NATURAL HAZARD MAPPING

This map and the associated information displayed thereon are to be used for general illustrative purposes only, and is not suitable or intended for navigation, legal, engineering or surveying purposes. Although best efforts have been made to create accuracy, due to the complex and extensive nature of the data, all representations and/or information provided herein are approximate and users should consult the primary data and information sources to confirm the accuracy of the map. The Municipality and the South Nation Conservation Authority, their employees and agents, do not guarantee the accuracy of the map, and will not be liable for any claims for damages or loss arising its use. The user hereby accepts and assumes all inherent risks associated with the use of this map. This map is produced in part with data provided by the Ontario Geographic Data Exchange under Licence with the Ontario Ministry of Natural Resources and the Queen's Printer for Ontario, 2014. Orthophotography © Aéro-Photo inc. 2014

00014