

WANTED

Have you seen these turtles?

If you see any of the following turtles, please contact:

Fisheries Department, South Nation Conservation

Toll-Free: 1-877-984-2948 • info@nation.on.ca



Northern Map Turtle

SCIENTIFIC NAME: *Graptemys geographica*

INFO: Medium-sized turtle (up to 28 cm, 11") with fine yellow lines on an olive green to brownish shell. The shell is broad with a scalloped rear edge. Yellow stripes on head, legs, and tail. Often found basking on logs and rocks in rivers and lakes.

SCIENTIFIC NAME: *Clemmys guttata*

INFO: Small turtle (up to 13 cm, 5") with a smooth black shell covered with yellow to orange spots. Spots also on top of head and on legs. Often associated with bogs and fens.



Spotted Turtle

SCIENTIFIC NAME: *Apalone spinifera*

INFO: Large turtle (up to 54 cm, 21") with a flat appearance and olive-grey to brown shell and body colour. Has a very long neck and an elongated snout. Often found in or near large lakes and rivers.



Spiny Softshell

SCIENTIFIC NAME: *Emydoidea blandingii*

INFO: Medium-sized turtle (up to 27 cm, 11") with a distinctive yellow chin and throat. The shell is black to greyish-brown, sometimes with light yellow speckling, and is high-domed (up to 10 cm, 4") like a helmet. Found in ponds, rivers, lakes, marshes, swamps, and often seen crossing roadways.



Blanding's Turtle

SCIENTIFIC NAME: *Sternotherus odoratus*

A.K.A. Common Musk Turtle

INFO: Small turtle (up to 13 cm, 5") with a smooth, high-domed and often ridged, olive to black shell. The head is decorated with two yellow stripes. Often found in shallow lakes, rivers and marshes.



Stinkpot

SCIENTIFIC NAME: *Chelydra serpentina*

APPEARANCE: Large turtle (up to 45 cm, 18"), light brown to black shell, large head, triangular scales on upper part of tail. Found in a variety of wetlands and often seen crossing roadways.



Snapping Turtle



SOUTH NATION
CONSERVATION
DE LA NATION SUD

Rare Turtle Study

South Nation Conservation is conducting a survey of rare turtles across its jurisdiction. The purpose of this survey is to determine the presence and location of rare turtles reported to be in the South Nation Conservation watershed. Turtles are good indicators of a healthy and ecologically stable watershed.

The six rare turtles being studied are:

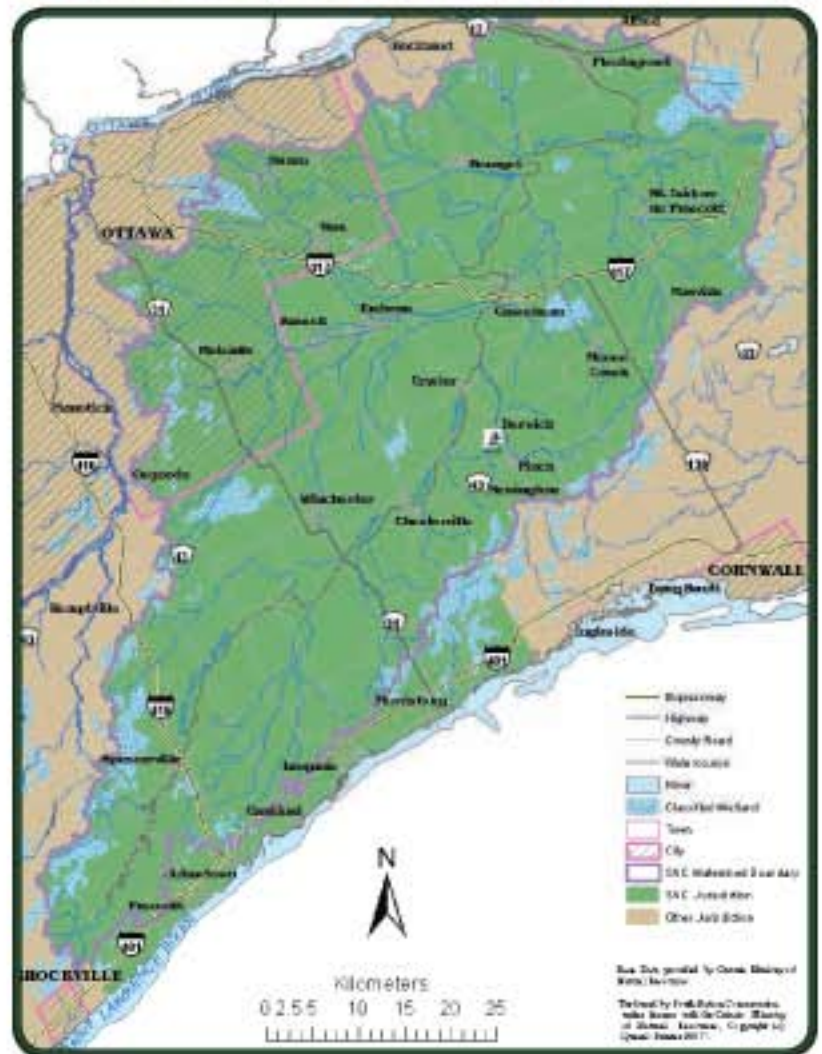
- Spiny Softshell
- Spotted Turtle
- Blanding's Turtle
- Stinkpot (a.k.a. Common Musk Turtle)
- Northern Map Turtle
- Snapping Turtle

The painted turtle depicted below is commonly seen and often mistaken for the turtles we are studying. Public sightings are an important component of our study. Whether you see a live turtle or a dead turtle (even road kills), please contact South Nation Conservation and tell us about your observation. We encourage you to provide pictures (if possible) of your sighting to help in our confirmation process.

If you would like to know more information about rare turtles in our watershed or to learn ways to become more involved in our project, please contact us and we would be happy to answer any of your questions.

Your help in providing us with the locations of these rare turtles will greatly assist in our endeavor.

South Nation Jurisdiction



In partnership with:



Note: The Painted Turtle is NOT part of our study!



Painted Turtle

SCIENTIFIC NAME: *Chrysemys picta* spp.
APPEARANCE: Medium-sized turtle (up to 15 cm, 6"), yellow to orange-red stripes on head and legs. Orange-red pattern on edge of shell. Often found in ponds and marshes.